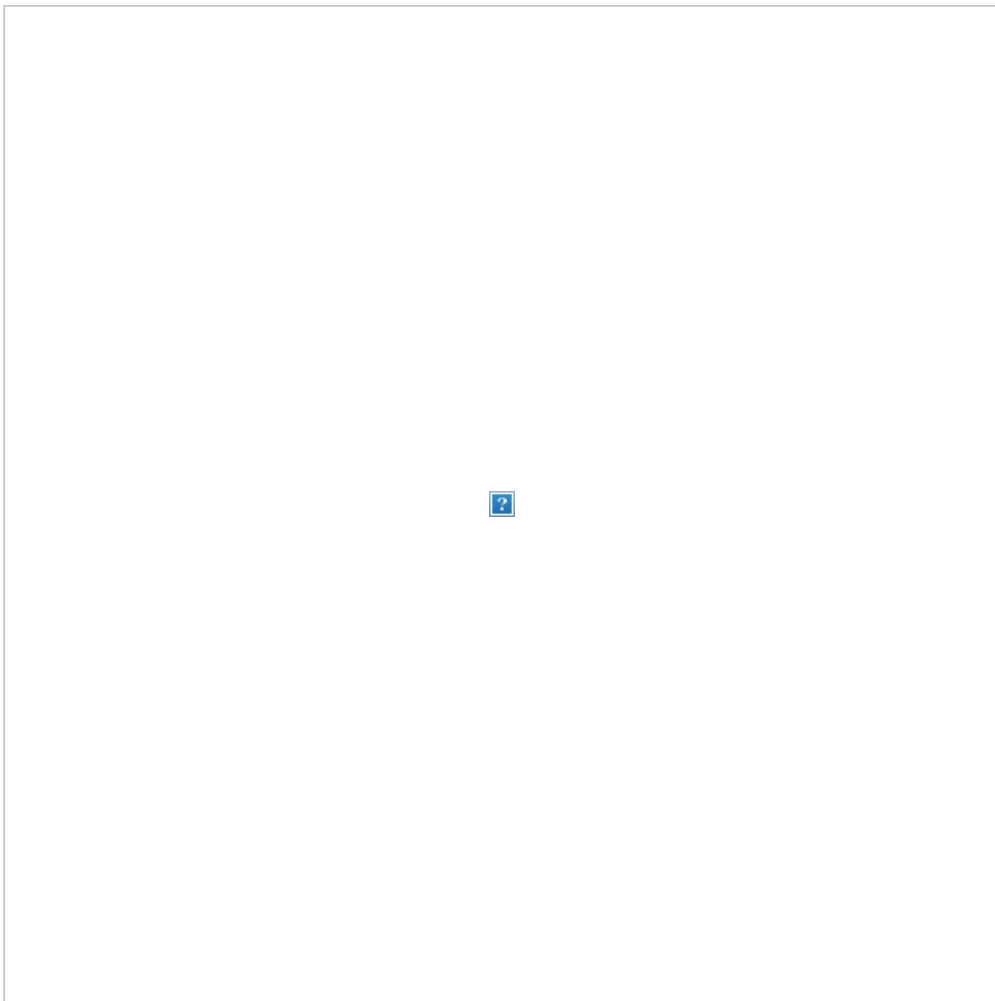


# White Space analyzer

Measurements carried out with RFTrack (<http://wireless.ictp.it/tws/rftrack/>) over the specified frequency range and antenna.  
Remember that most TV signals are vertically polarized.  
The received signal level measured in dBm is dependent on the antenna gain and orientation.



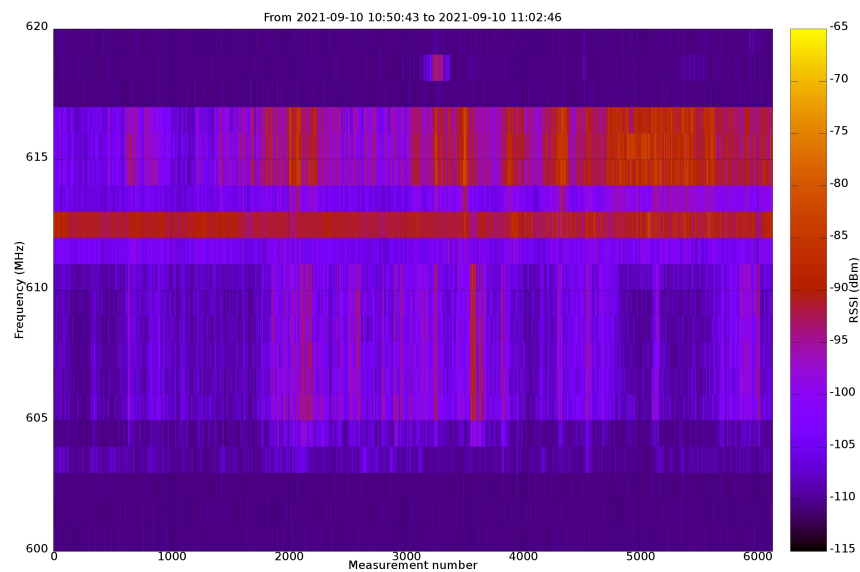
## Campaign measurements info

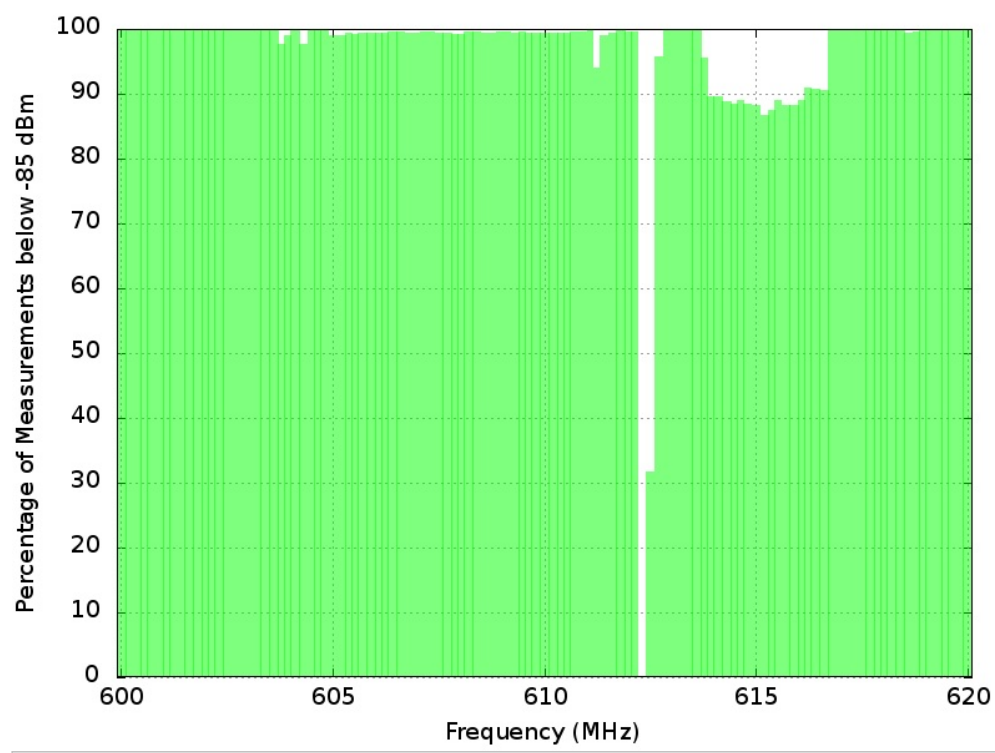


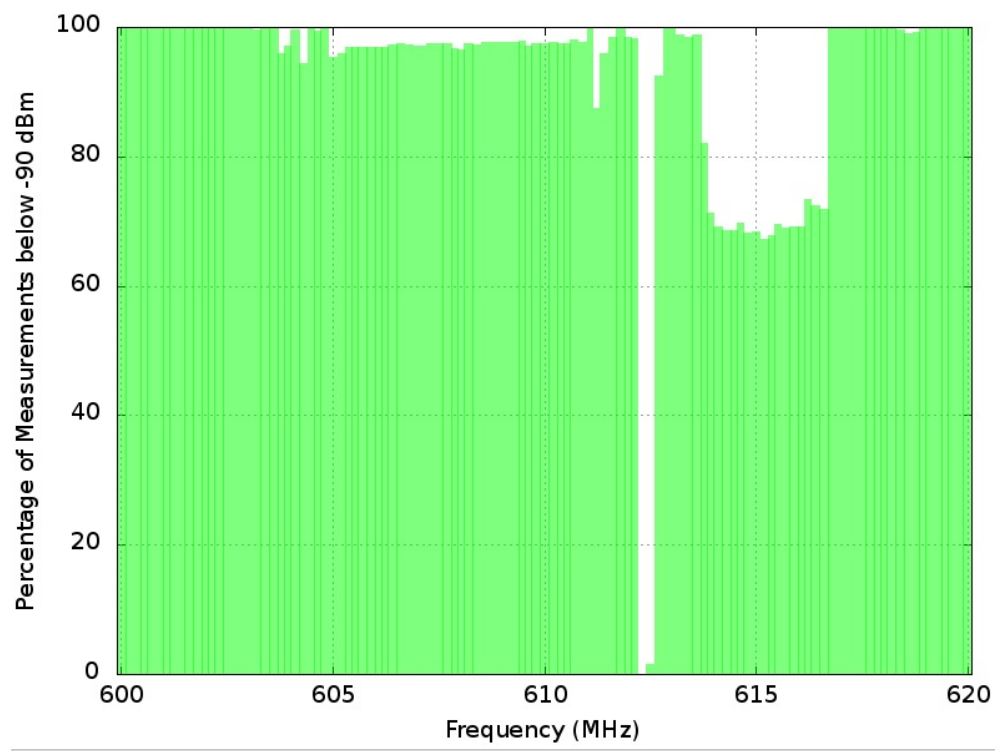
Info	Value
Campaign date:	2021-09-10
Campaign duration:	0:12:03 (hour:min:sec)
Route length:	1.8 Km
N. points:	6132
Country:	no info
Country Code:	MW
Place of measurement:	Chimwere
Region:	no info
Population:	0

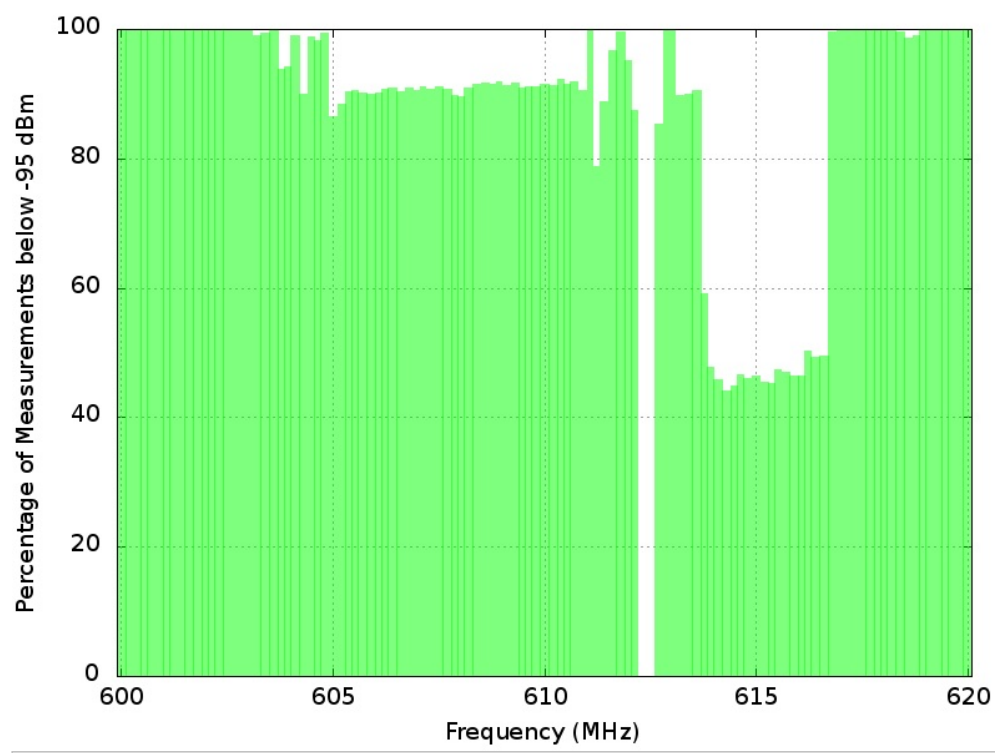
# Spectrum Maps

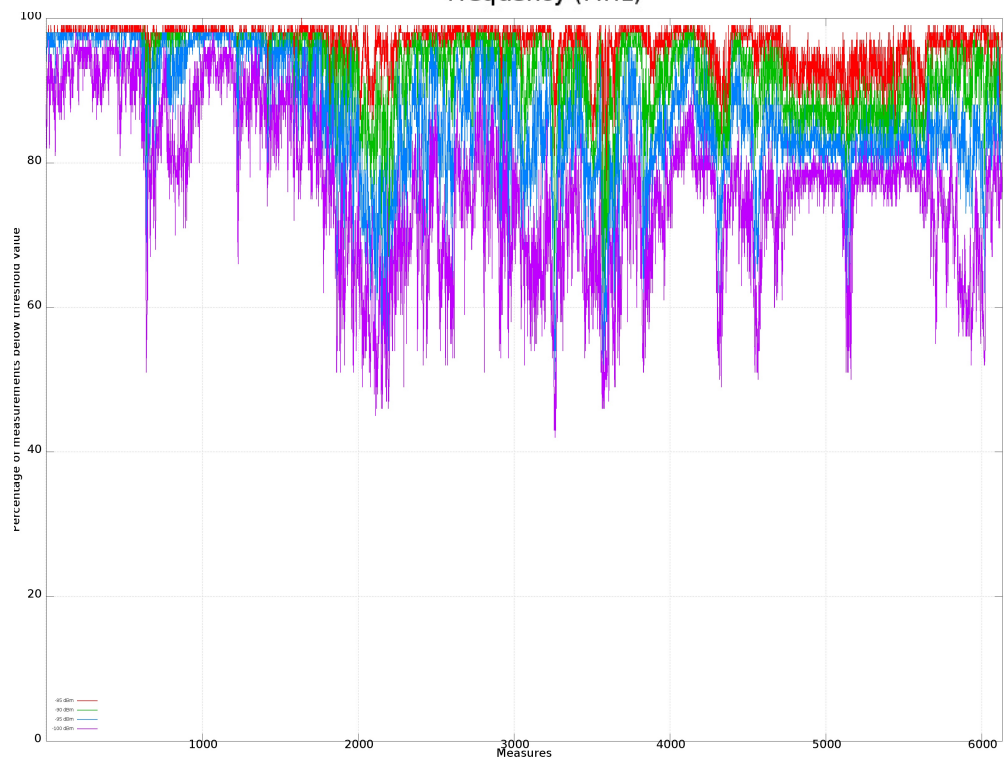
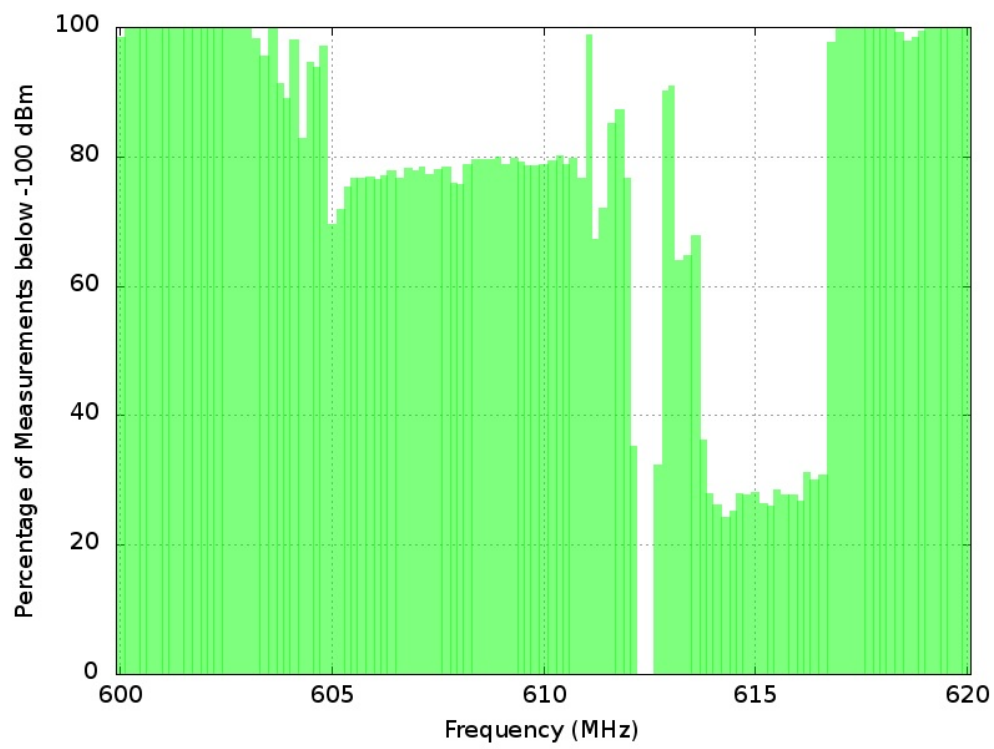
The first image shows power levels over time (number of measurements), the following images show different thresholds of spectrum occupancy.













## Sponsor

The project was supported by the Shuttleworth Foundation (<https://www.shuttleworthfoundation.org/>)



## Copyright © 2015

Wireless T/ICT4D Lab (<http://wireless.ictp.it>)

Marco Rainone - SolviTech (<https://www.linkedin.com/in/marcorainone>)