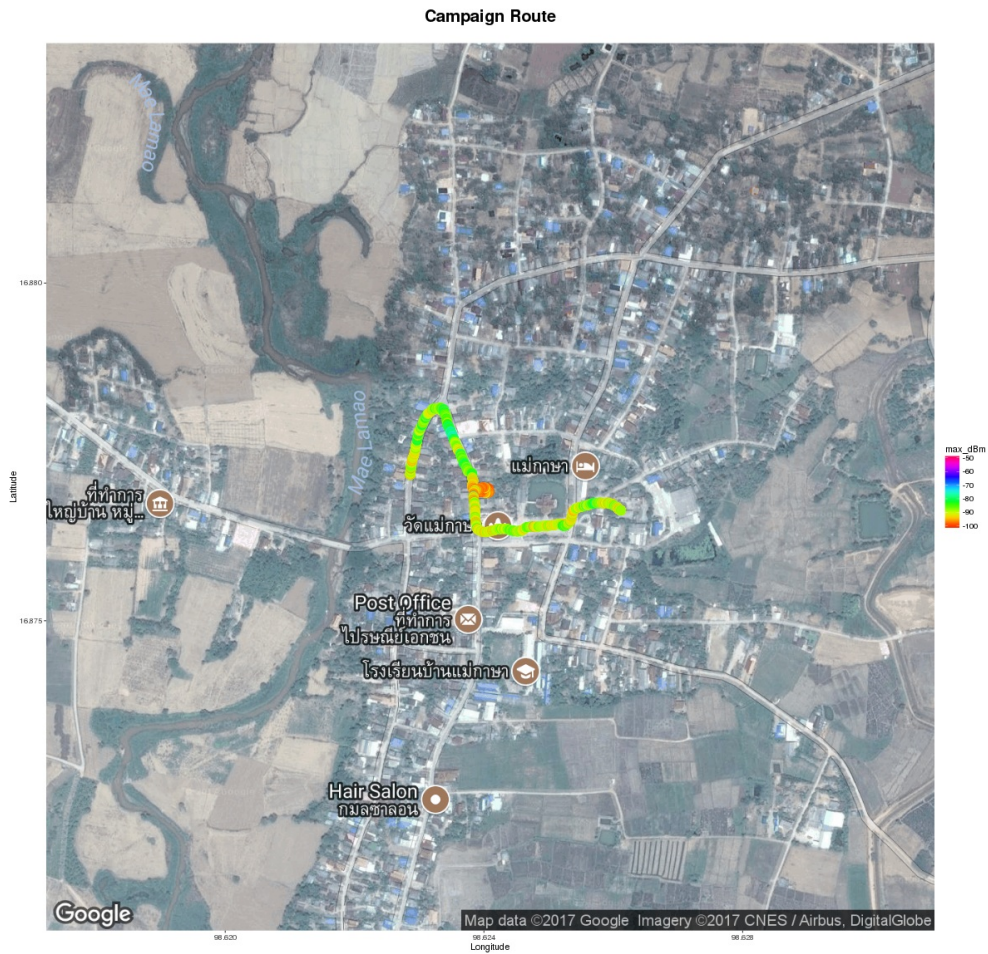


# White Space analyzer

Measurements carried out with RFTrack (<http://wireless.ictp.it/twsw/rftrack/>) over the specified frequency range and antenna. Remember that most TV signals are vertically polarized. The received signal level measured in dBm is dependent on the antenna gain and orientation.



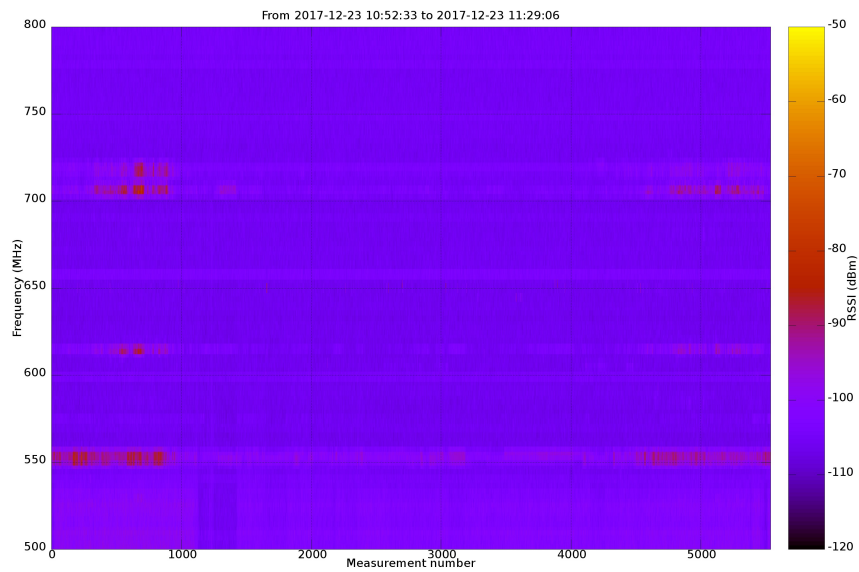
## Campaign measurements info



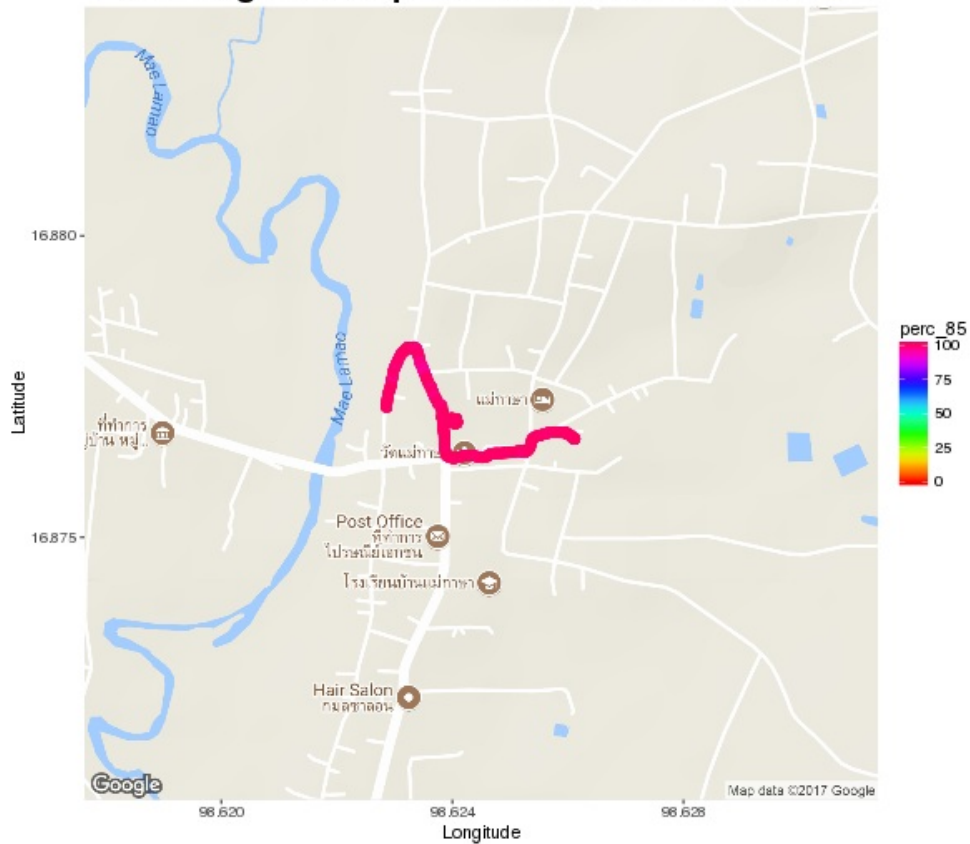
Info	Value
Campaign date:	2017-12-23
Campaign duration:	0:36:33 (hour:min:sec)
Route length:	0.8 Km
N. points:	5537
Country:	Thailand
Country Code:	TH
Place of measurement:	Ban Pho Thong
Region:	Tak
Population:	no info

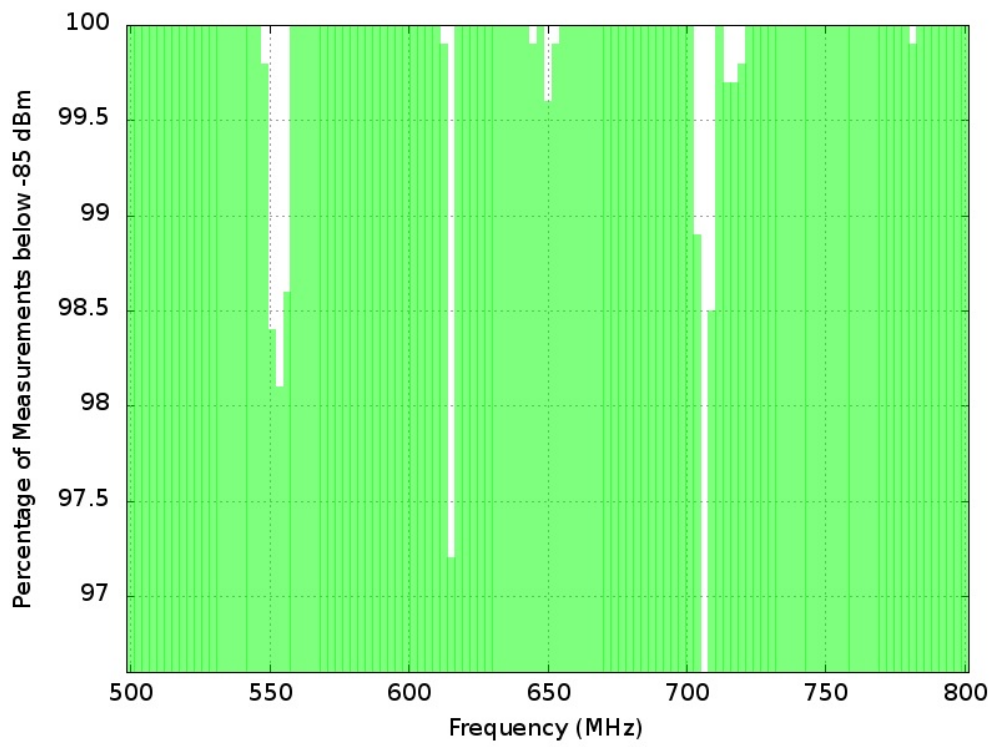
# Spectrum Maps

The first image shows power levels over time (number of measurements), the following images show different thresholds of spectrum occupancy.

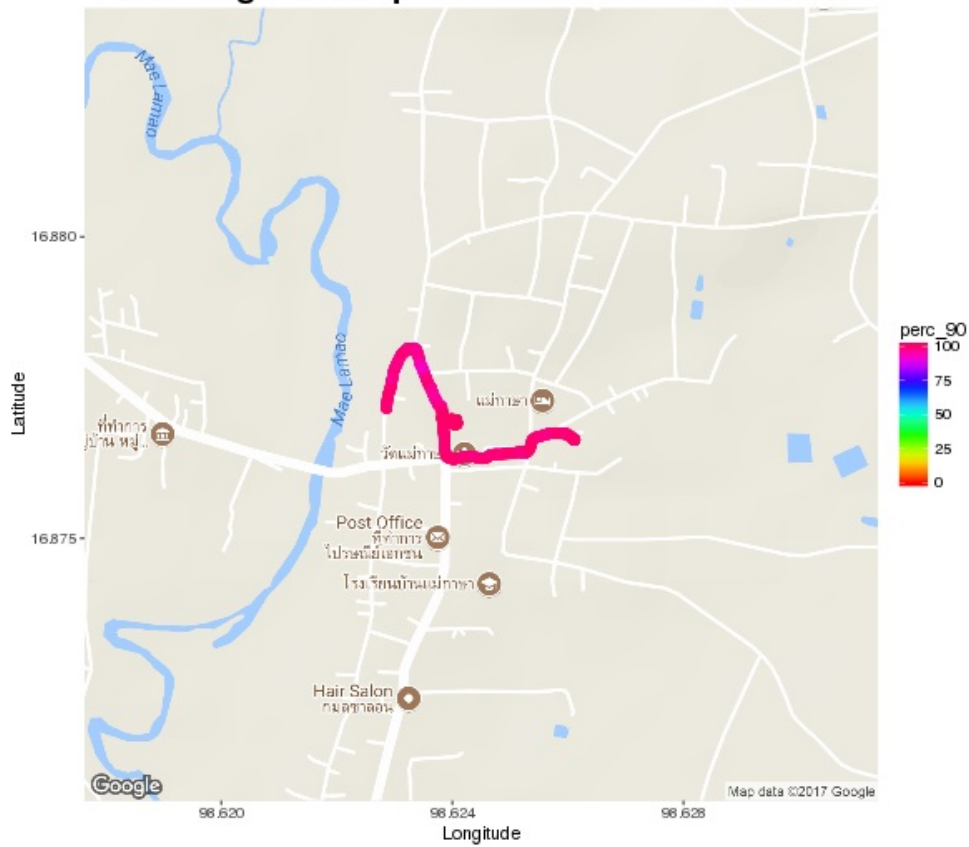


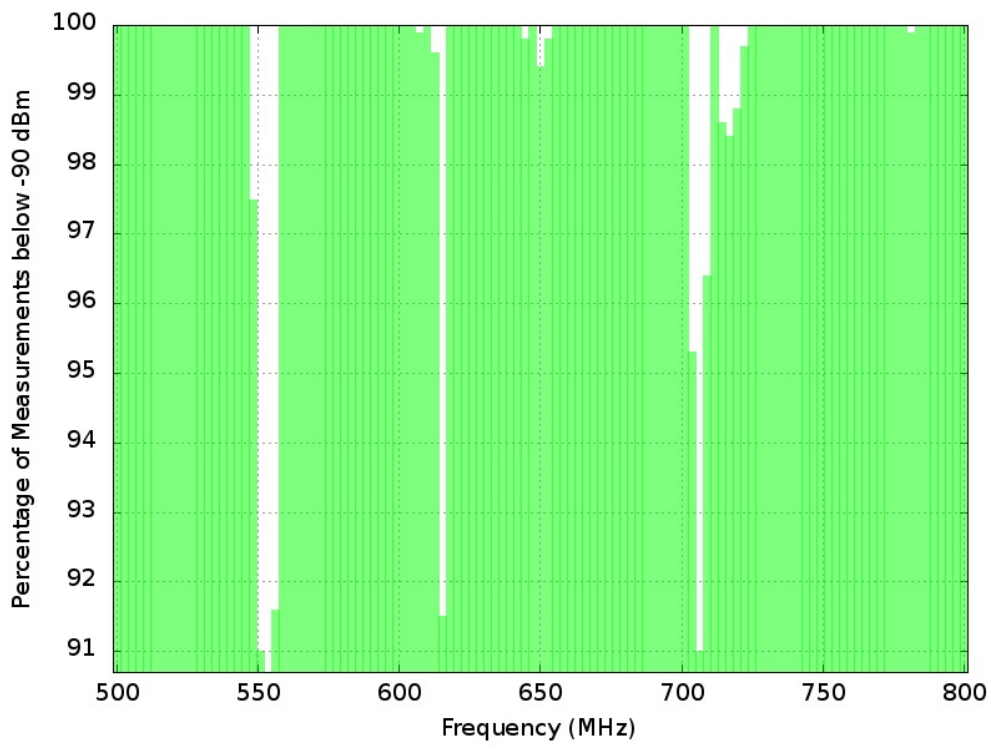
## Percentage of samples below -85 dBm threshold



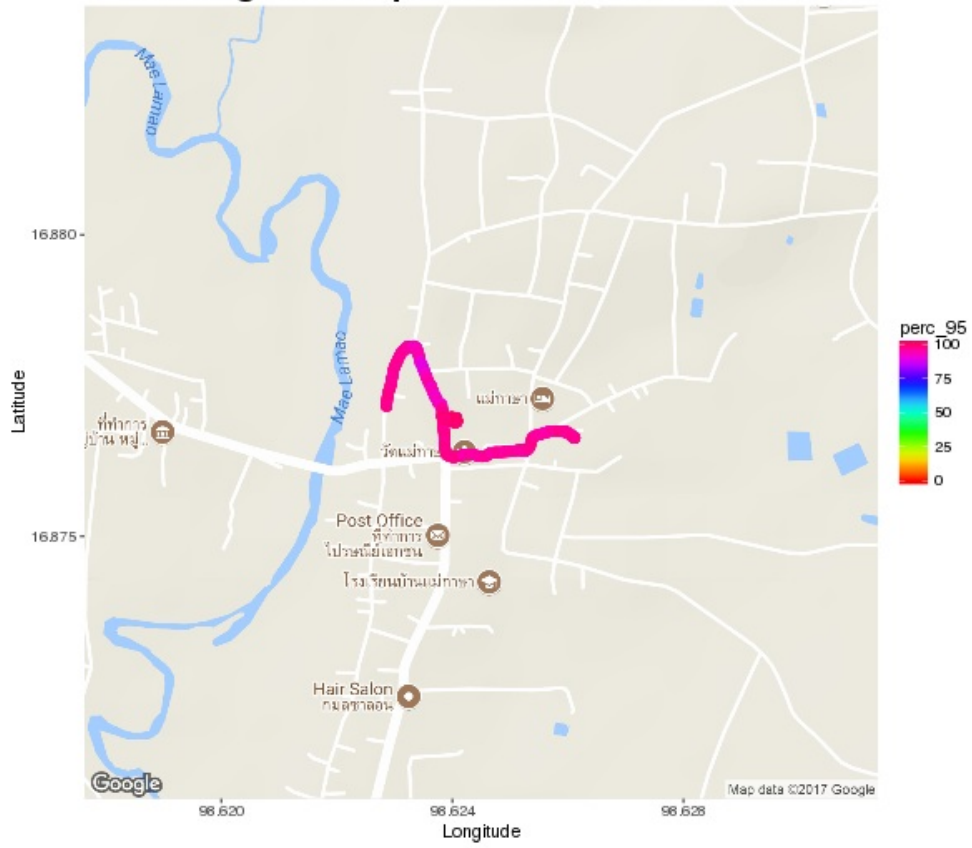


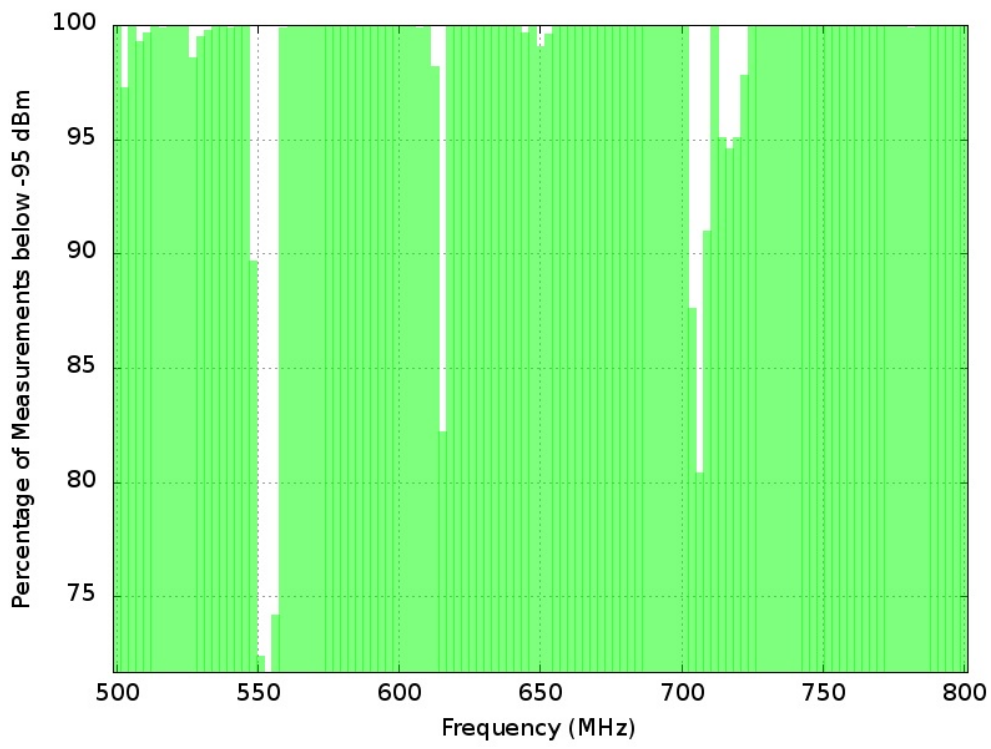
**Percentage of samples below -90 dBm threshold**





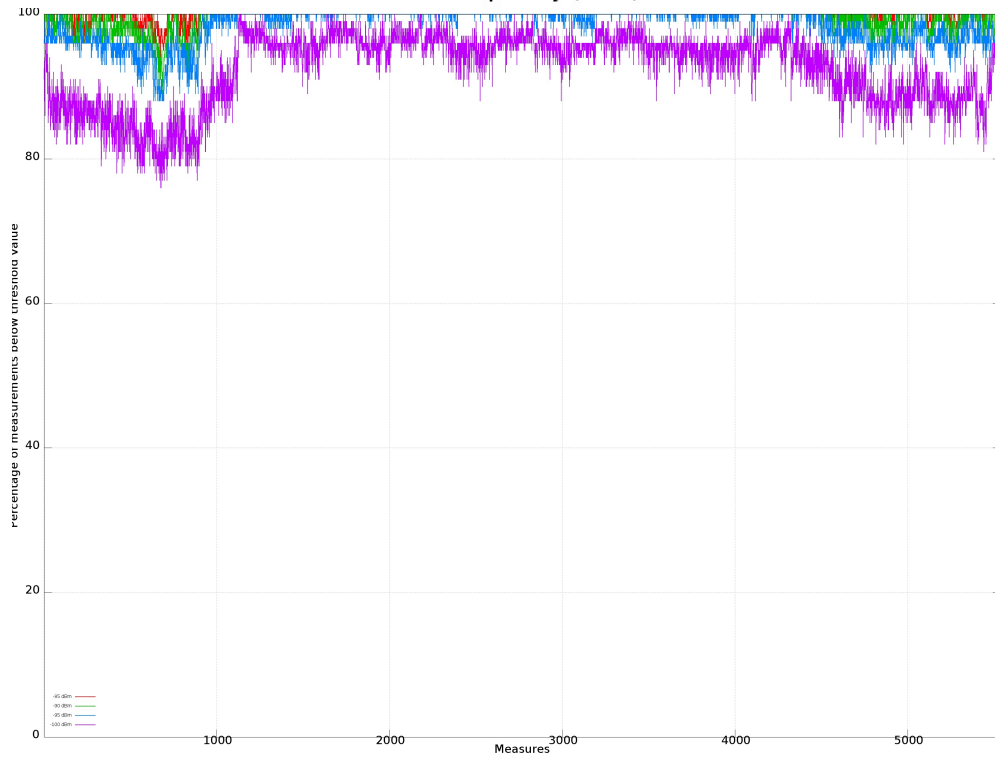
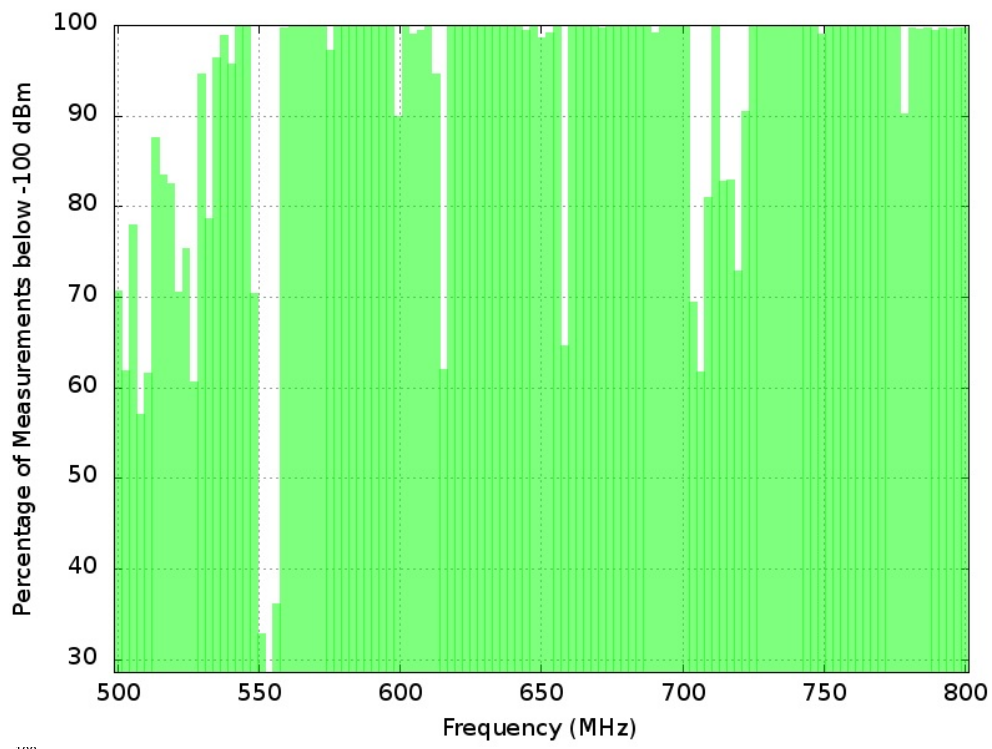
Percentage of samples below -95 dBm threshold

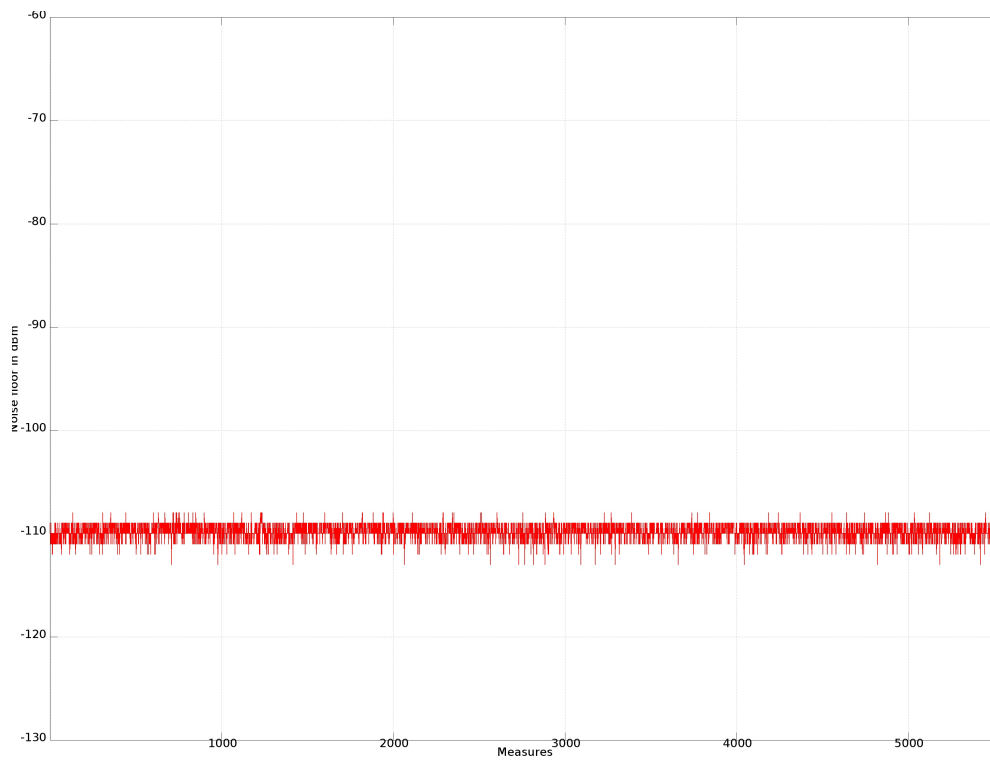




Percentage of samples below -100 dBm threshold







## Sponsor

The project was supported by the Shuttleworth Foundation (<https://www.shuttleworthfoundation.org/>)



## Copyright © 2015

Wireless T/ICT4D Lab (<http://wireless.ictp.it>)

Marco Rainone - SolviTech (<https://www.linkedin.com/in/marcorainone>)