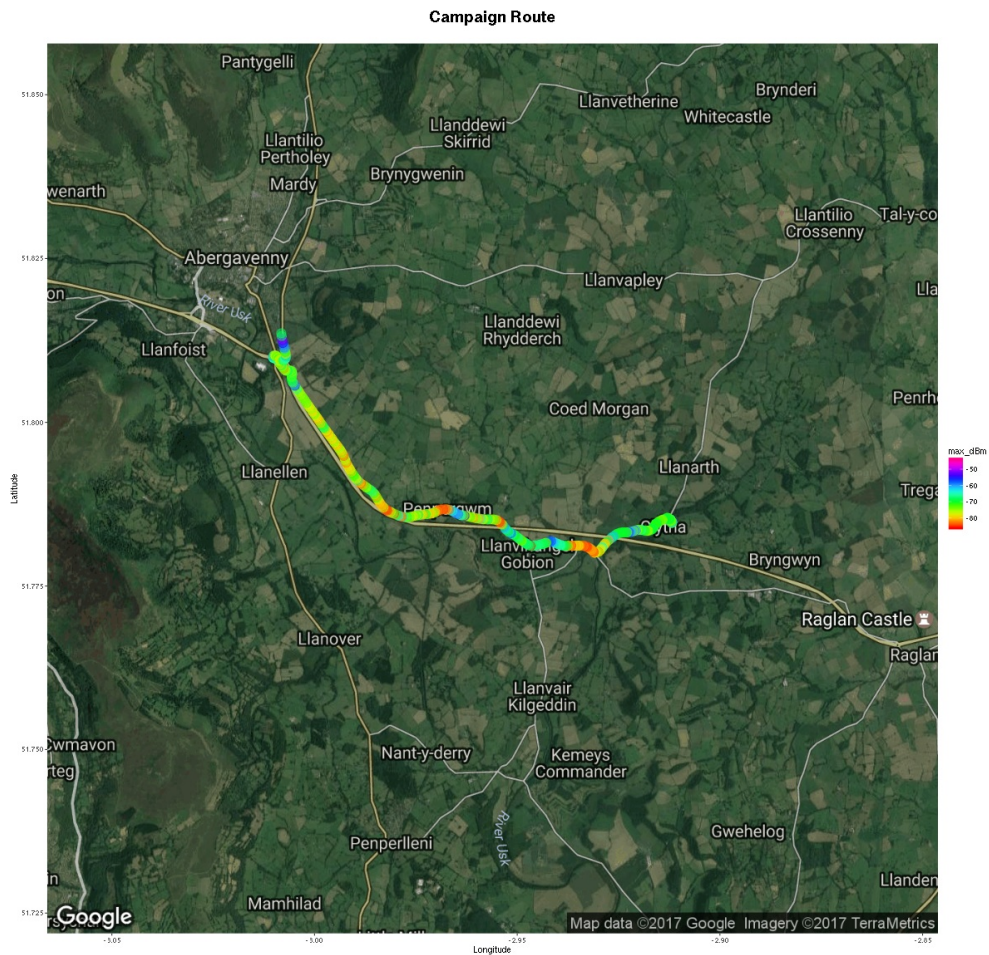


White Space analyzer

Measurements carried out with RFTrack (<http://wireless.ictp.it/twsw/rftrack/>) over the specified frequency range and antenna. Remember that most TV signals are vertically polarized. The received signal level measured in dBm is dependent on the antenna gain and orientation.



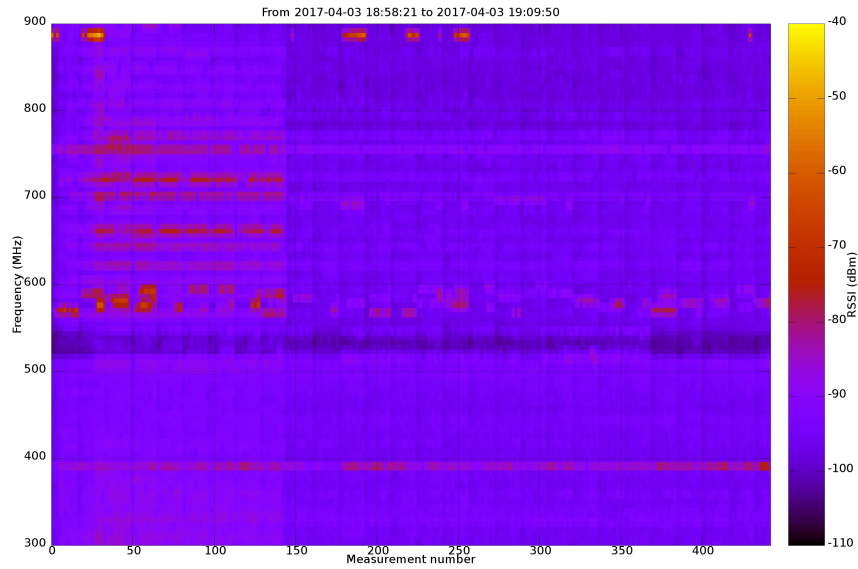
Campaign measurements info



Info	Value
Campaign date:	2017-04-03
Campaign duration:	0:11:29 (hour:min:sec)
Route length:	9.6 Km
N. points:	443
Country:	United Kingdom
Country Code:	GB
Place of measurement:	Llanarth
Region:	Wales
Population:	no info

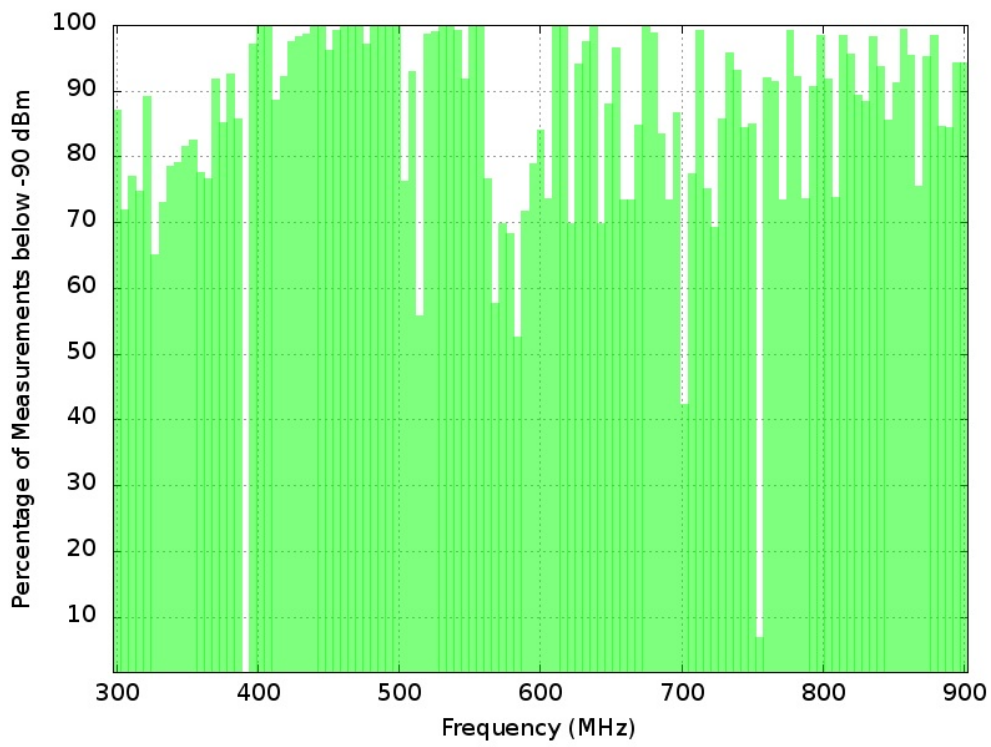
Spectrum Maps

The first image shows power levels over time (number of measurements), the following images show different thresholds of spectrum occupancy.

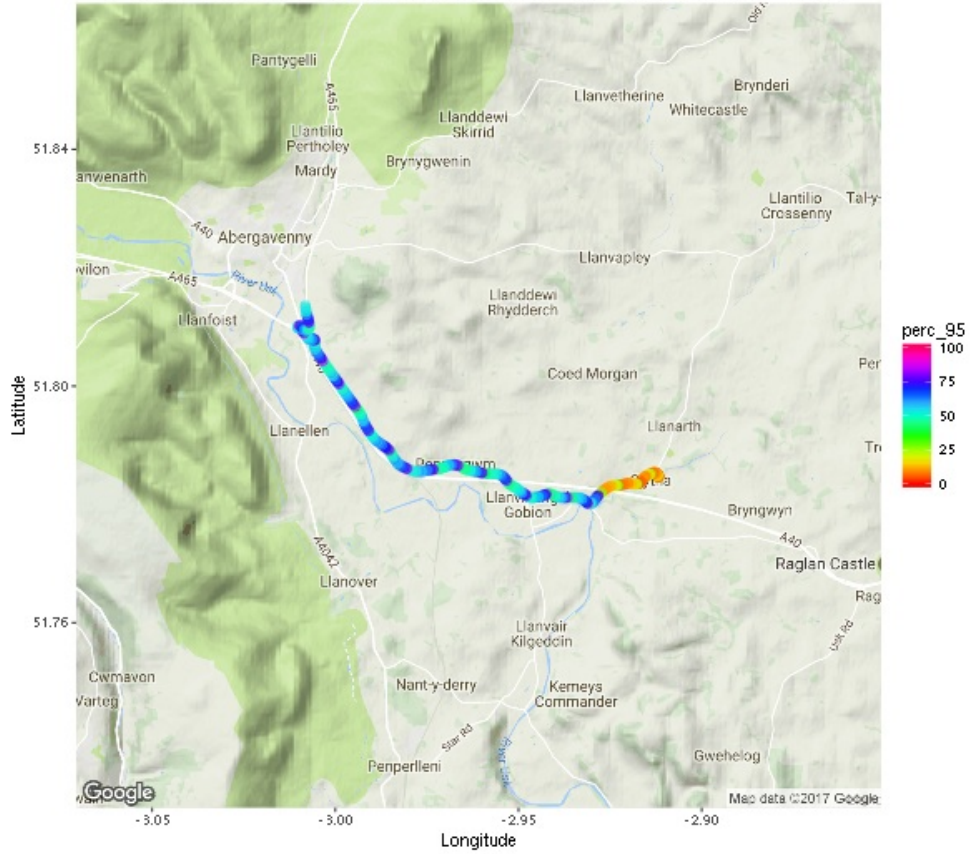


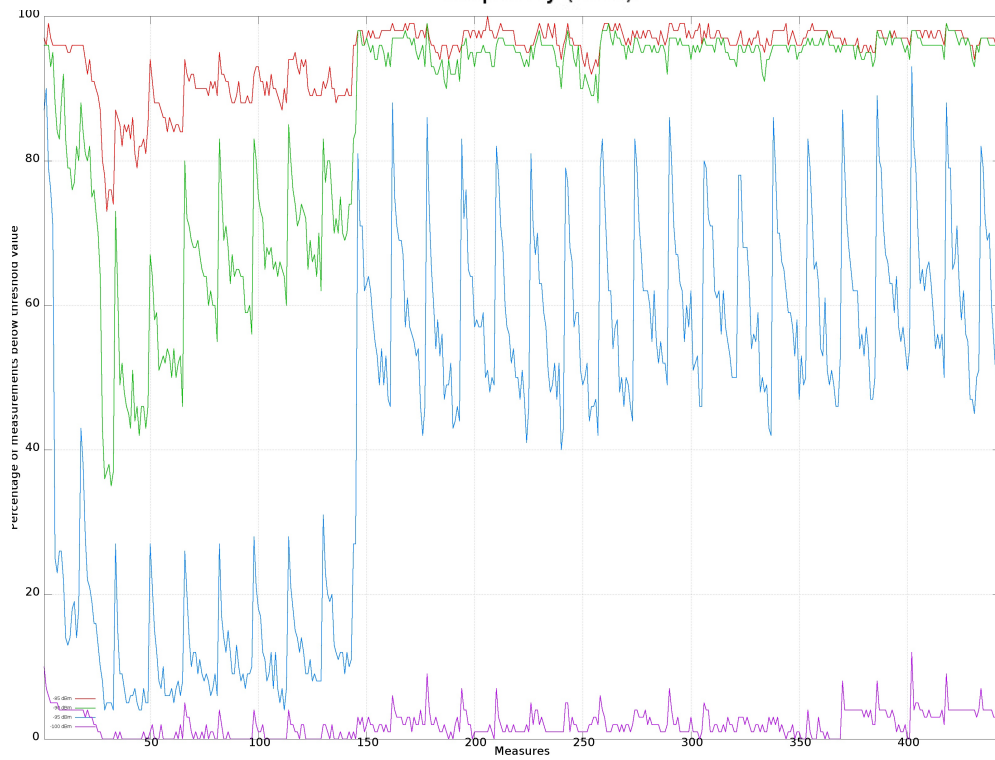
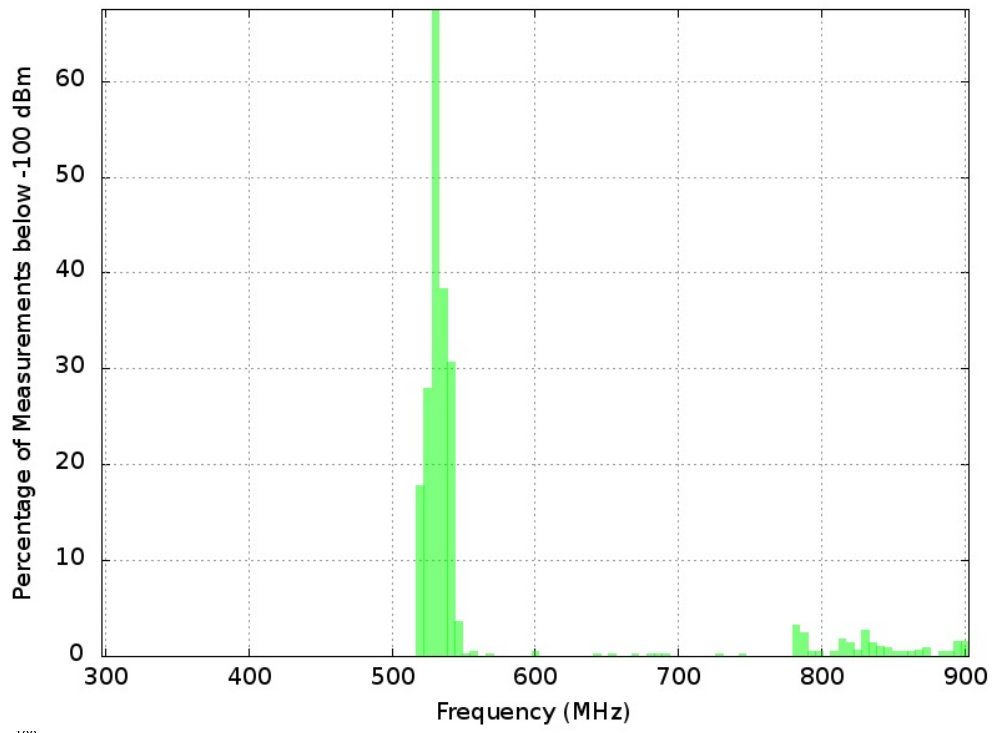
Percentage of samples below -85 dBm threshold





Percentage of samples below -95 dBm threshold







Sponsor

The project was supported by the Shuttleworth Foundation (<https://www.shuttleworthfoundation.org/>)



Copyright © 2015

Wireless T/ICT4D Lab (<http://wireless.ictp.it>)

Marco Rainone - SolvITech (<https://www.linkedin.com/in/marcorainone>)