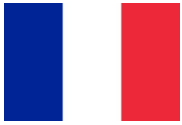
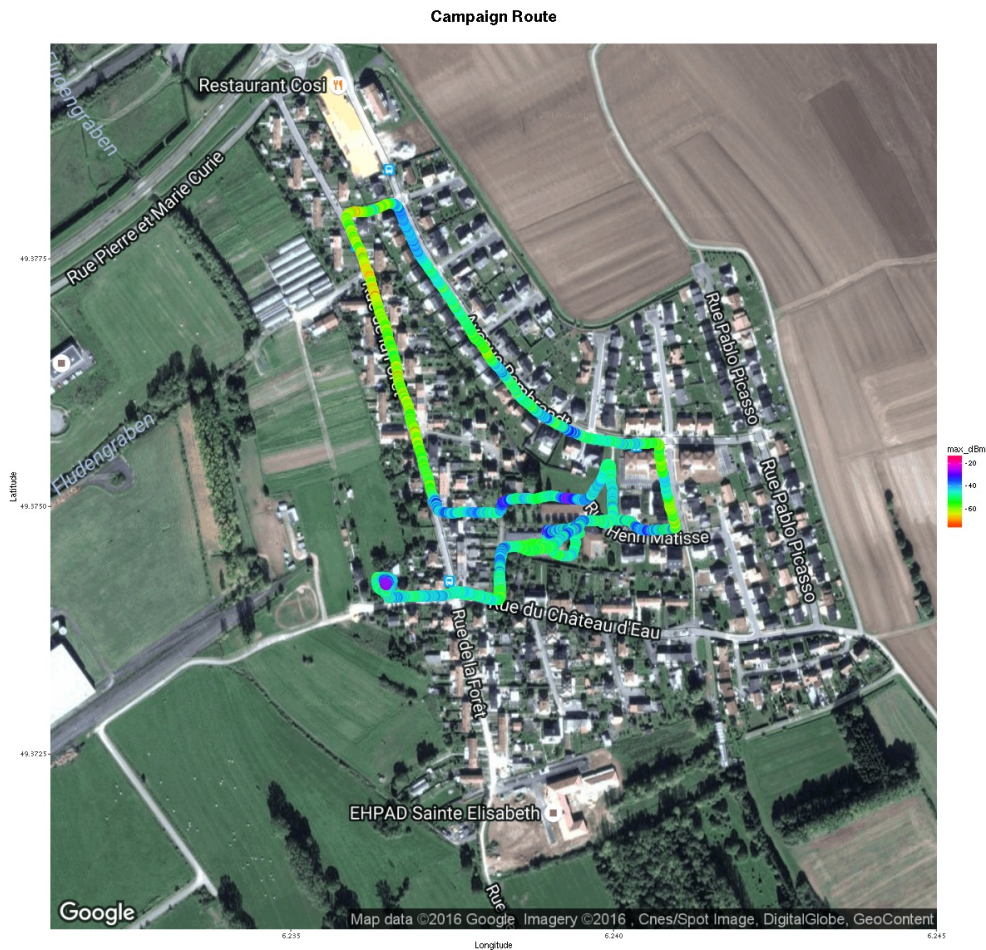


White Space analyzer

Measurements carried out with RFTrack (<http://wireless.ictp.it/tvws/rftrack/>) over the specified frequency range and antenna. The received signal level measured in dBm is dependent on the antenna gain and orientation.



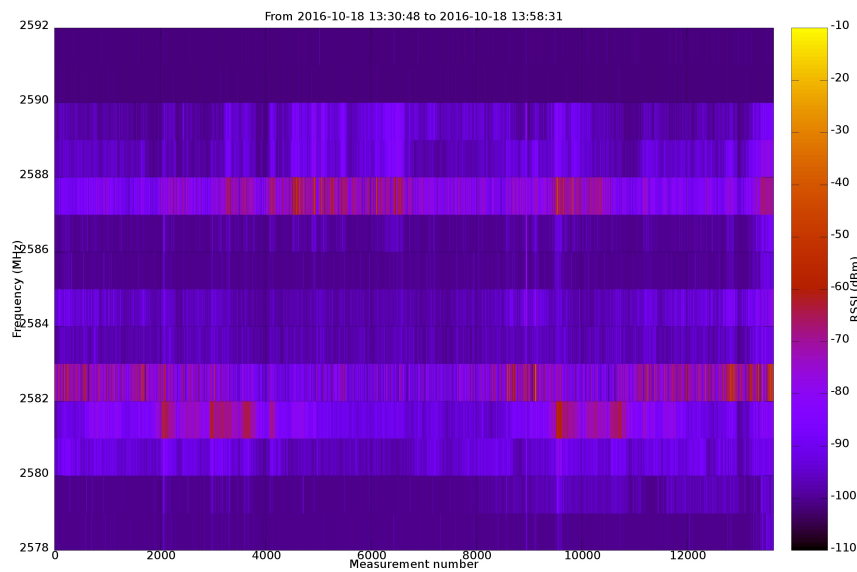
Campaign measurements info



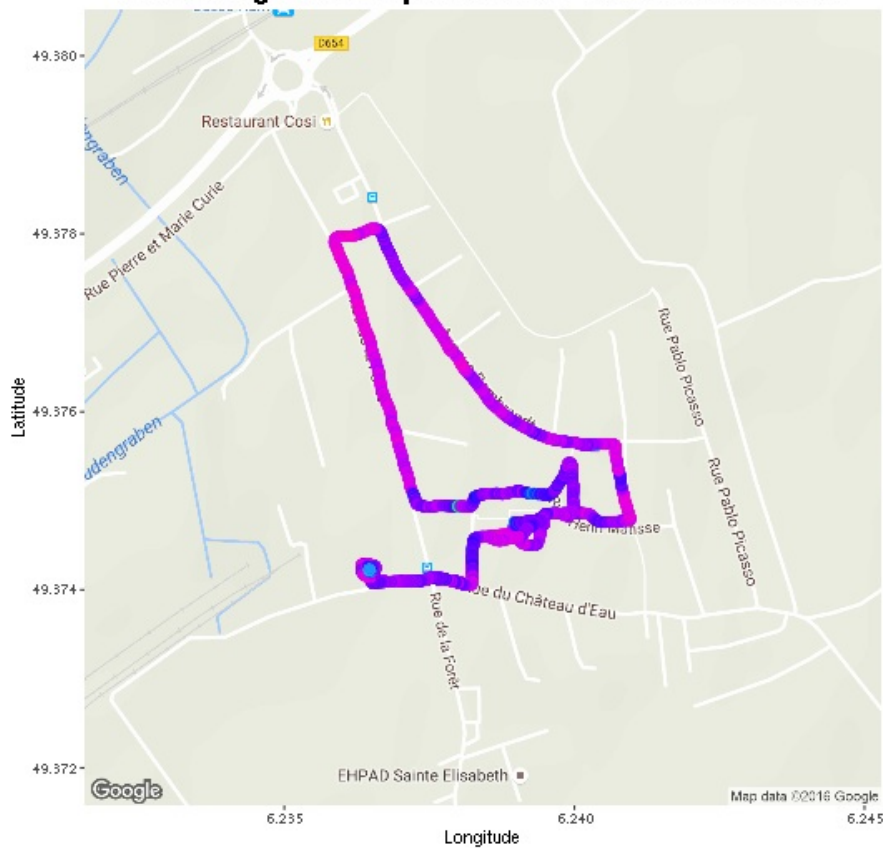
Info	Value
Campaign date:	2016-10-18
Campaign duration:	0:27:43 (hour:min:sec)
Route length:	2.2 Km
N. points:	13640
Country:	France
Country Code:	FR
Place of measurement:	Basse-Ham
Region:	Grand-Est
Population:	1940

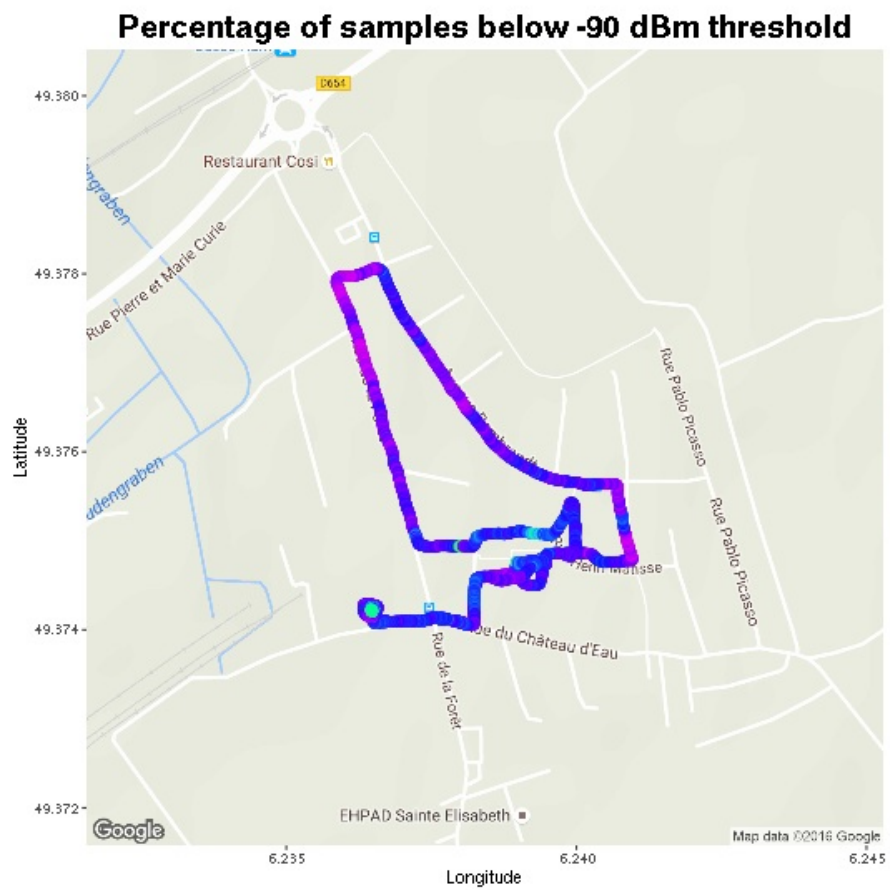
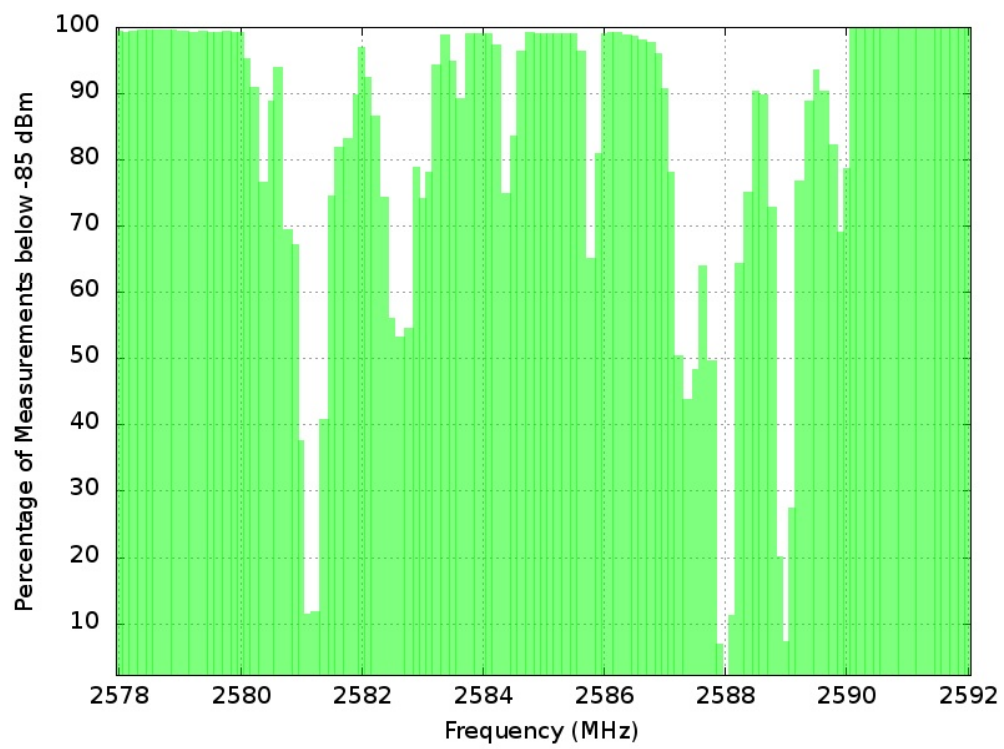
Spectrum Maps

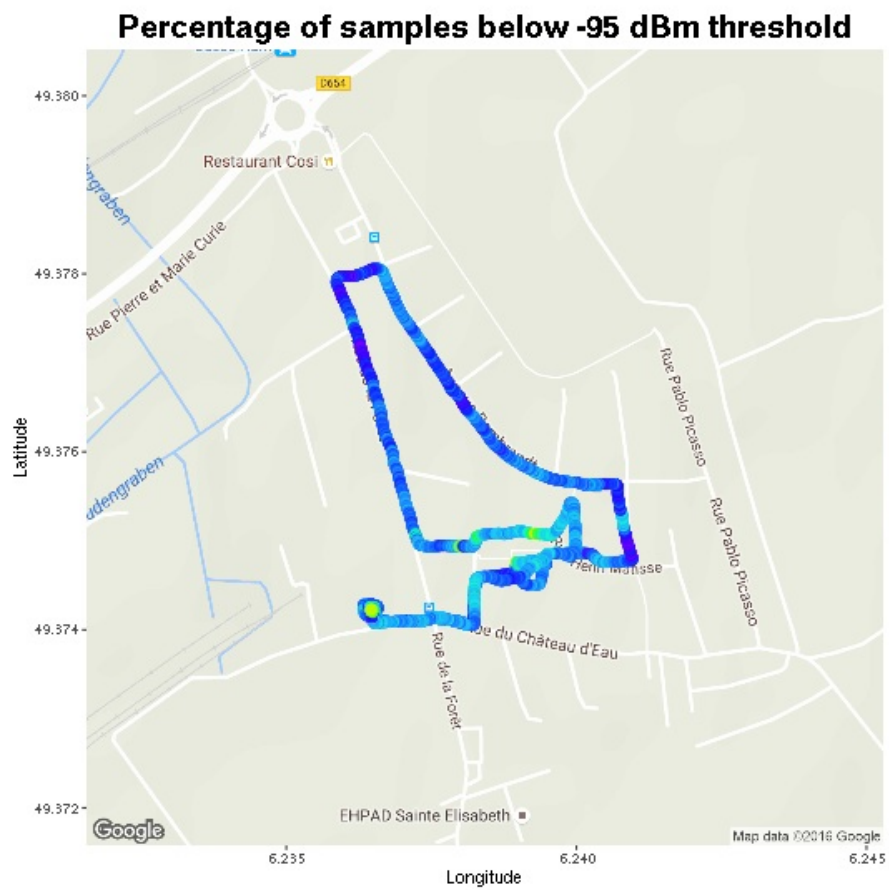
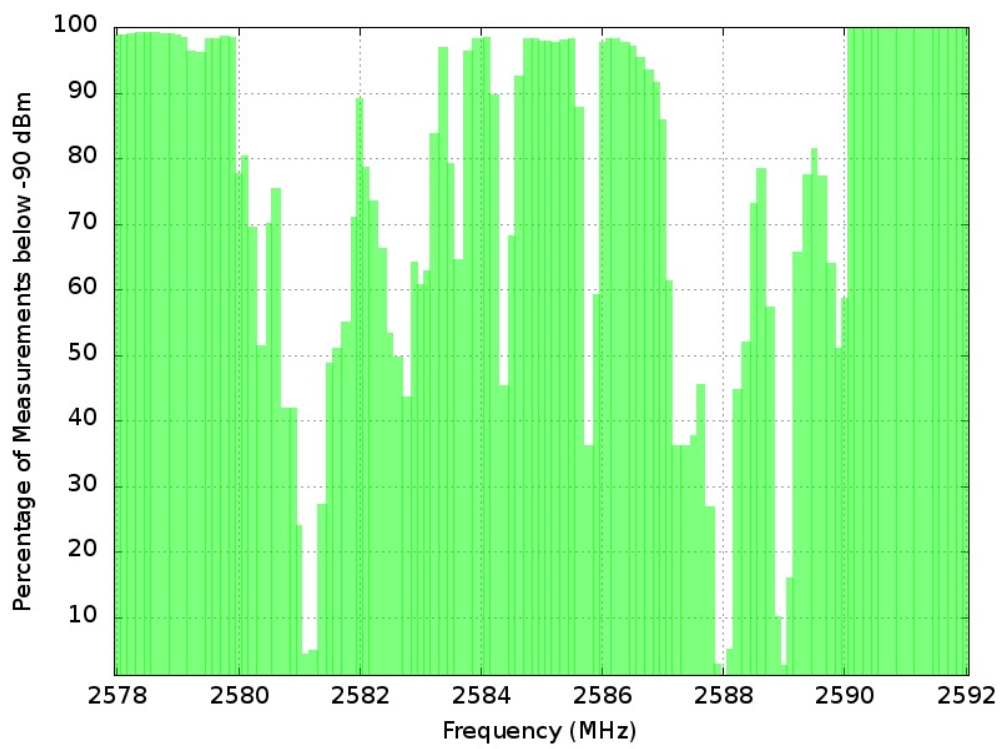
The first image shows power levels over time (number of measurements), the following images show different thresholds of spectrum occupancy.

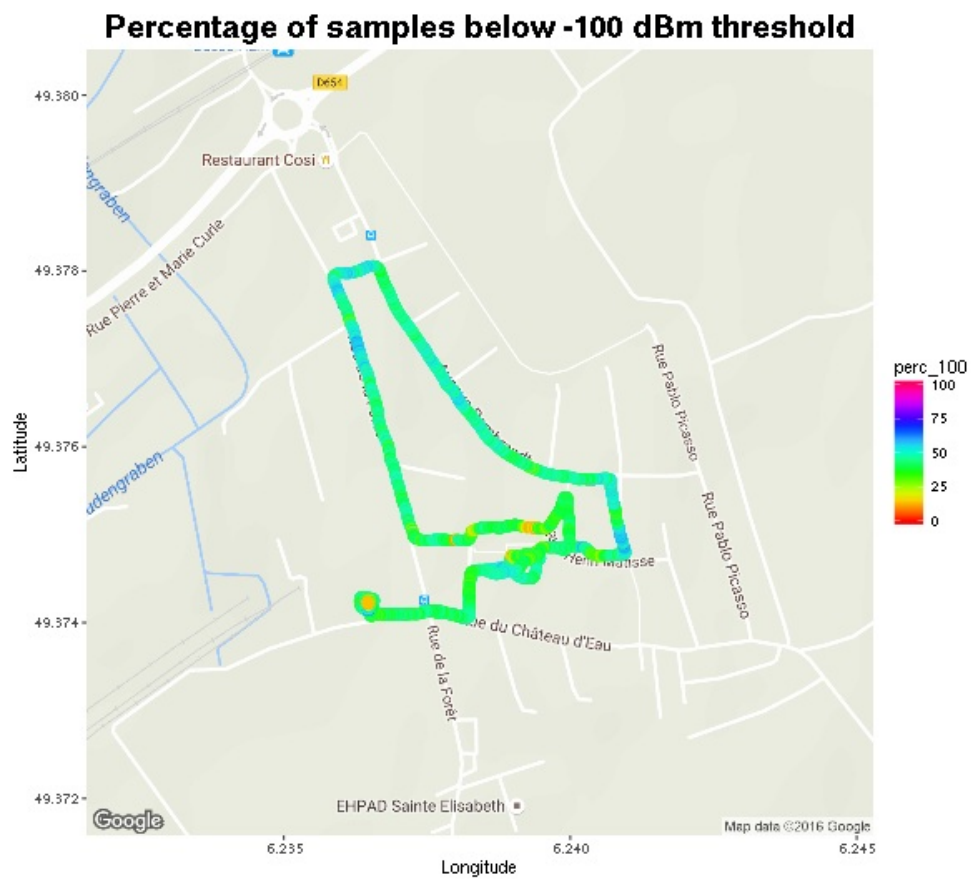
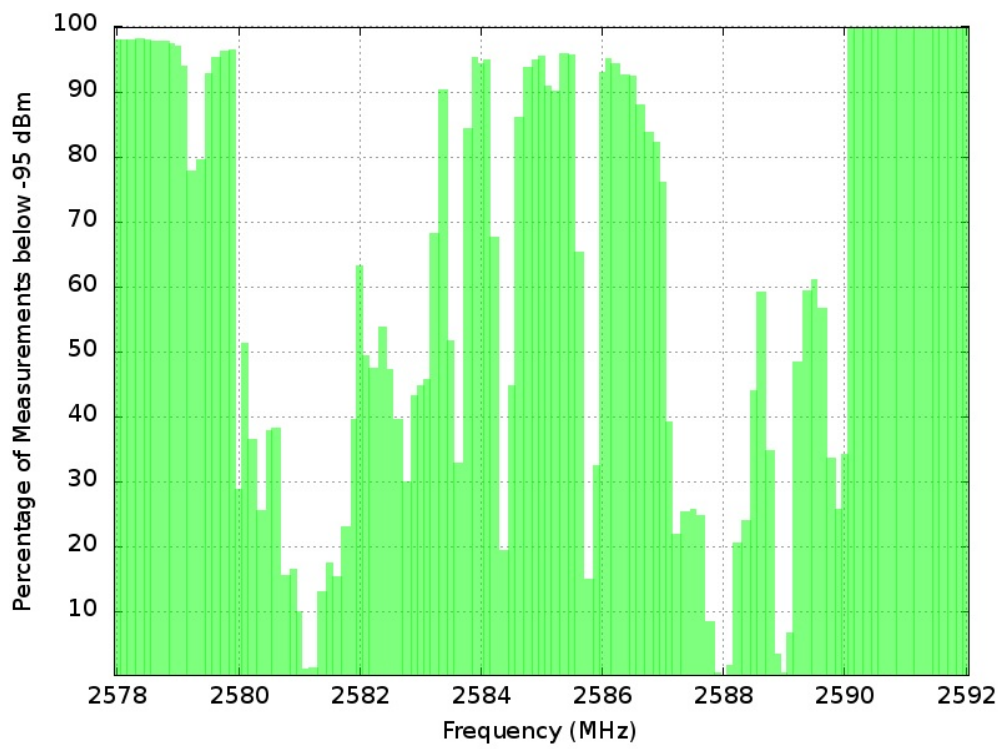


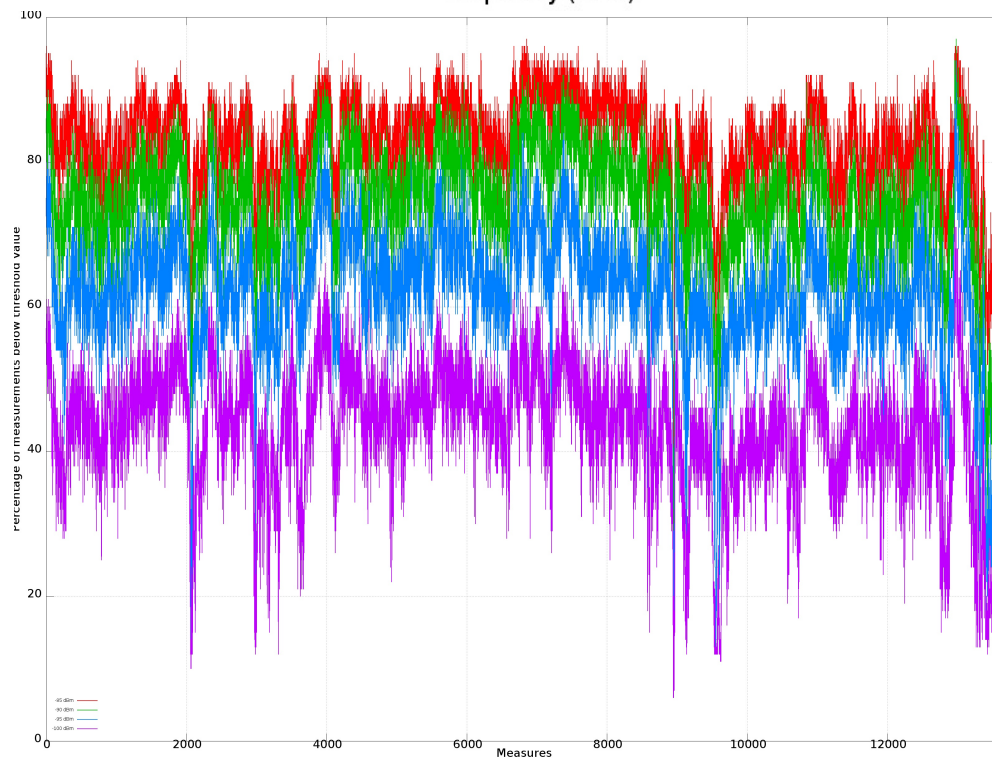
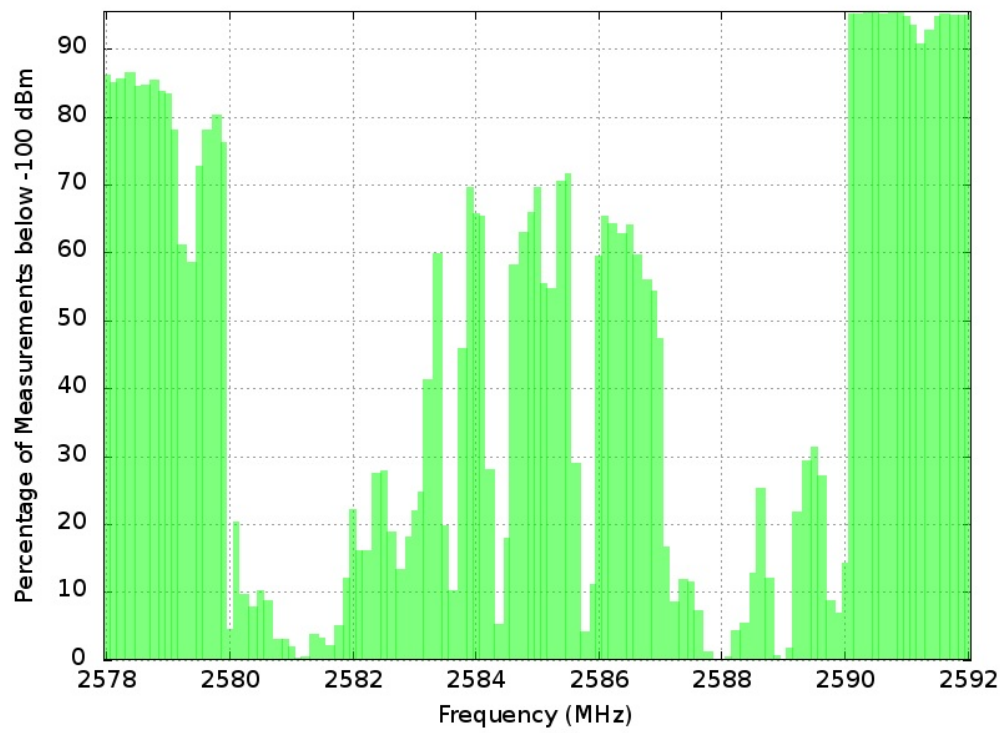
Percentage of samples below -85 dBm threshold

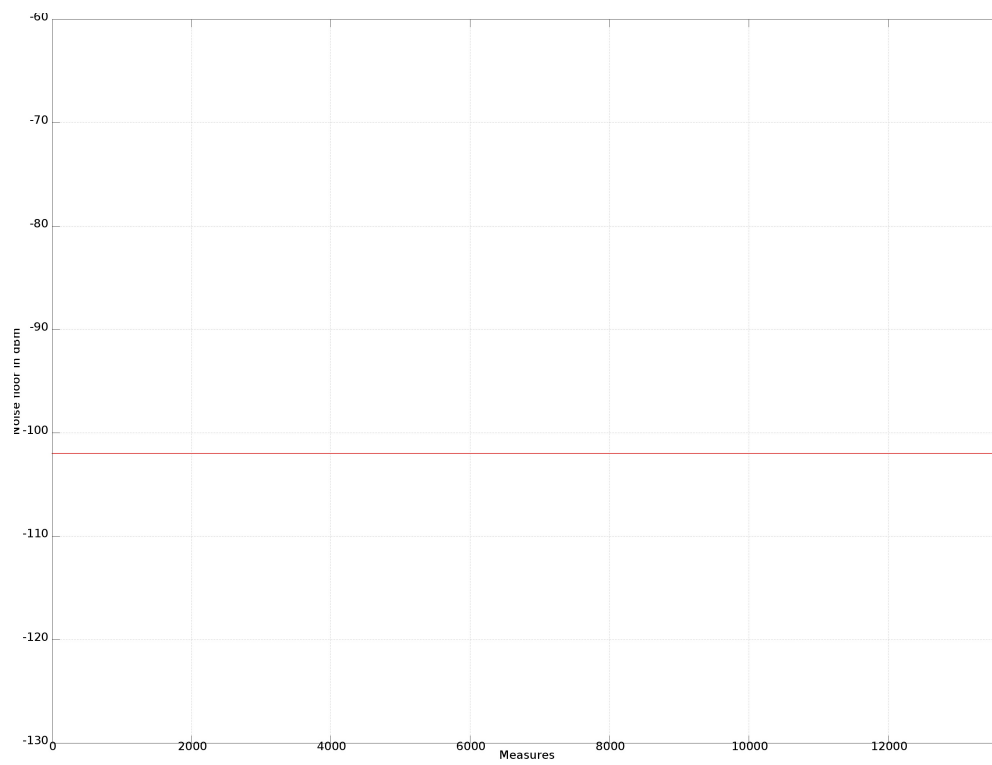












Sponsor

The project was supported by the Shuttleworth Foundation (<https://www.shuttleworthfoundation.org/>)



Copyright © 2015

Wireless T/ICT4D Lab (<http://wireless.ictp.it>)

Marco Rainone - SolviTech (<https://www.linkedin.com/in/marcorainone>)