



Development, prototyping and manufacturing of
well-tailored and cost-effective future-proof
hardware products and IoT systems

We are IRNAS

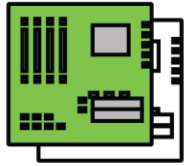
We specialize in rapid development of well-tailored cost-effective future-proof hardware products and IoT systems.

Fields of Expertise

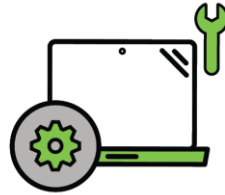
- IoT devices & sensors
- Wireless networking
- Conservation technology systems
- 3D bioprinting development
- CNC scientific instruments
- Medical devices
- Mathematical analysis and modelling



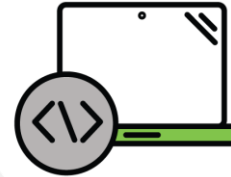
A complete hardware product development service:



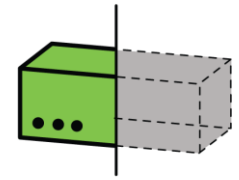
Electronics
engineering



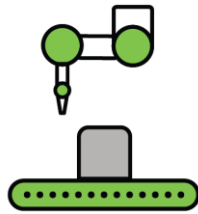
Software
development



Mechanical
engineering



Rapid
prototyping



Manufacturing



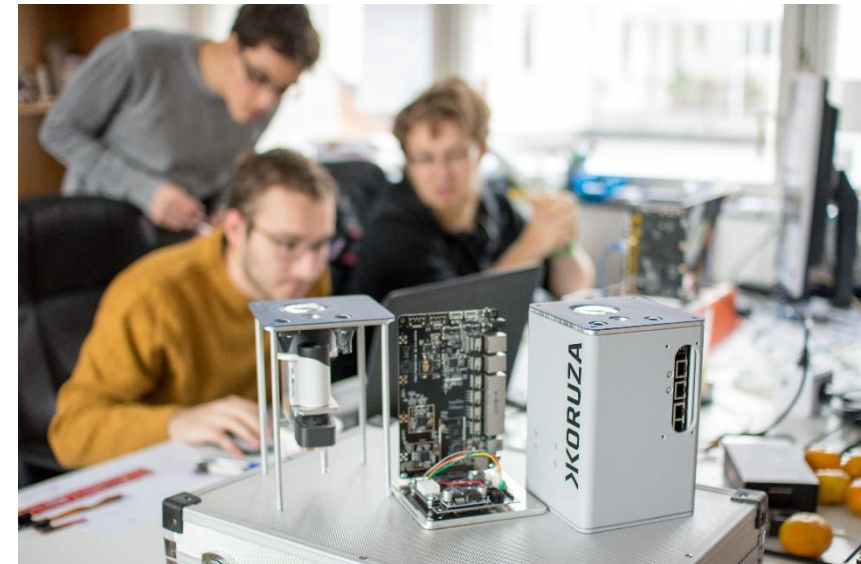
Deployment procedure
preparation and Field
testing



On-site support

Cross-disciplinary team

- ✓ Mechanical engineering
- ✓ Electrical engineering
- ✓ Software engineering
- ✓ Data analysis and numerical control
- ✓ Acoustical engineering
- ✓ Medical and bio-engineering
- ✓ Marketing and business



Cross-disciplinary team



Luka Mustafa

CEO and Founder of
IRNAS and Fabrikor



Eva Černčič

Programmer and
analyst



Vojislav Milivojević

Electronics Engineer



Mihael Miško

Production manager,
Mechanical Engineer



Jernej Kos

Software developer



Blaž Bratuš

Mechanical Engineer



Boštjan Vihar

Biologist



Luka Banović

Biomedical and
Acustical engineer



Anja Lazar

Marketing and
Impact



Barbara Razdevšek

Sales Manager



Goran Kecman

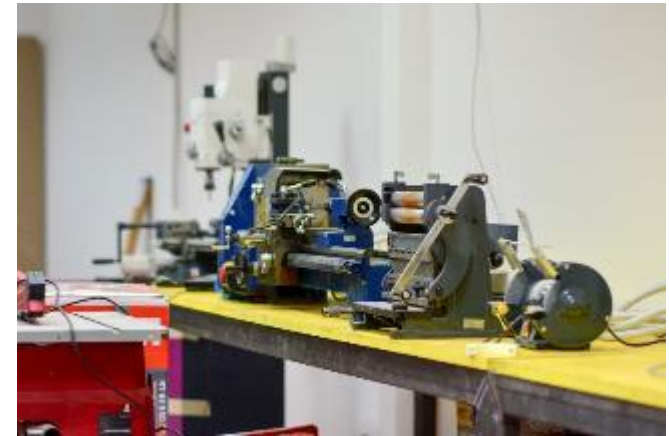
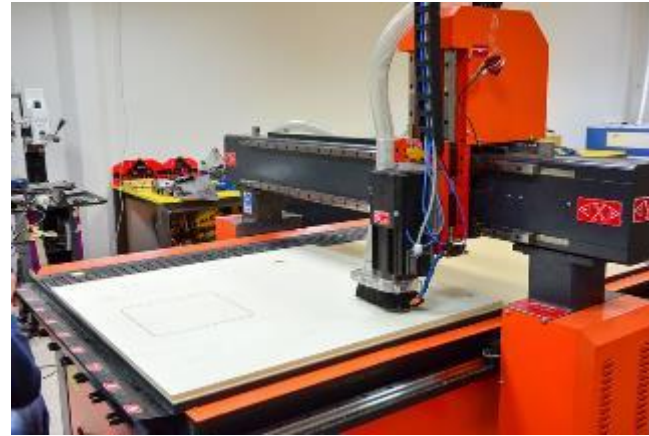
Embedded software
engineer



Jure Zagoranski

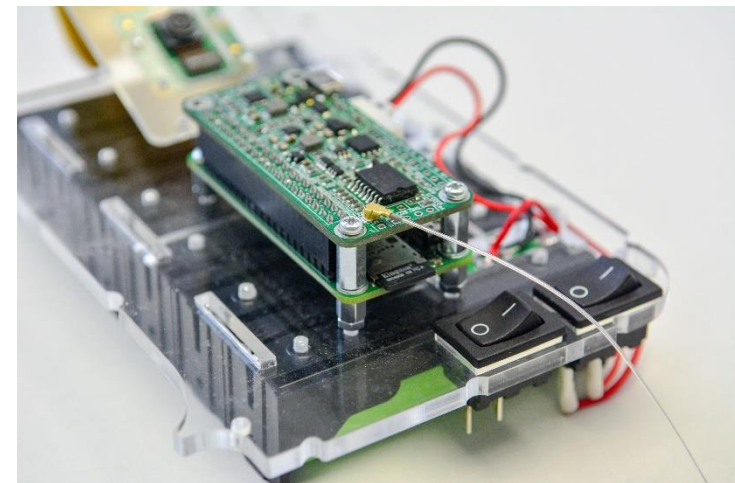
Projects support

In-house Prototyping & Manufacturing





Projects



KORUZA

Wireless optical communication system enabling building-to-building connectivity with an eye-safe highly collimated infra-red light beam at a capacity of 1 Gbps or 10 Gbps, at distances up to 150 meters.

Services:

- ✓ Electronics engineering
- ✓ Software engineering
- ✓ Mechanical engineering
- ✓ Rapid prototyping
- ✓ Medium size series manufacturing
- ✓ Experimental testing for scientific applications



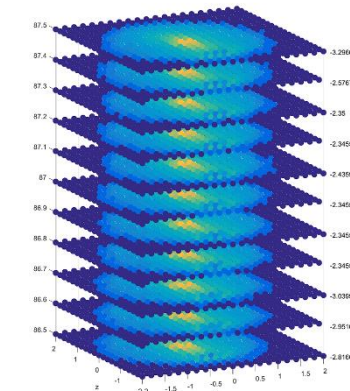
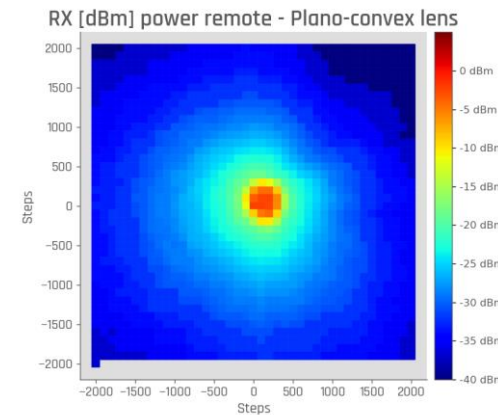
[FIND OUT MORE](#)

Optical beam analysis

Detailed analysis of an optical beam in free-space is key to understanding and designing an optimal long-distance communication setup. Beam scanner has been developed to: enable analysing an optical beam in 3D, enable evaluation of beam divergence, profile the power distribution and automatically optimize the placement of optical receivers and transmitters behind the lens or other optical elements.

Services:

- ✓ Electronics engineering
- ✓ Software engineering
- ✓ Mechanical engineering
- ✓ Experimental testing for scientific applications



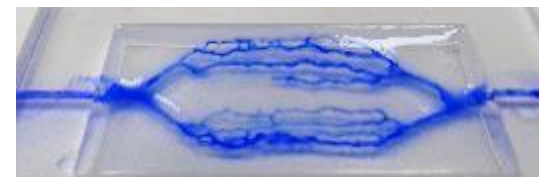
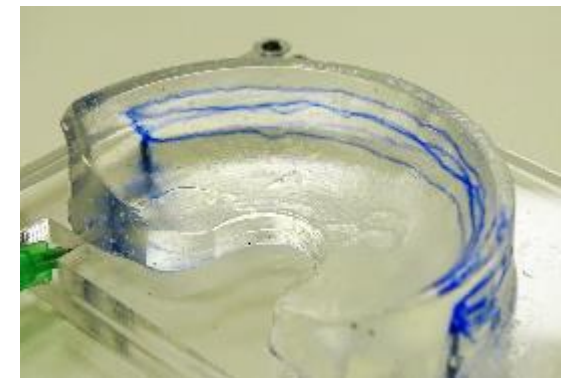
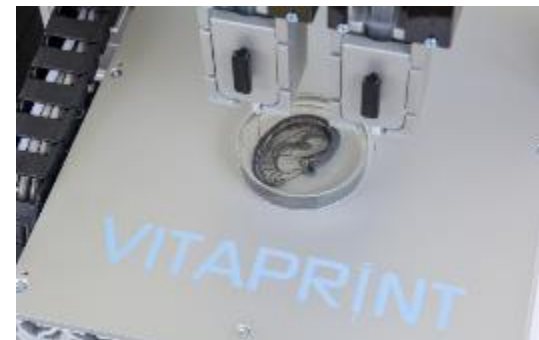
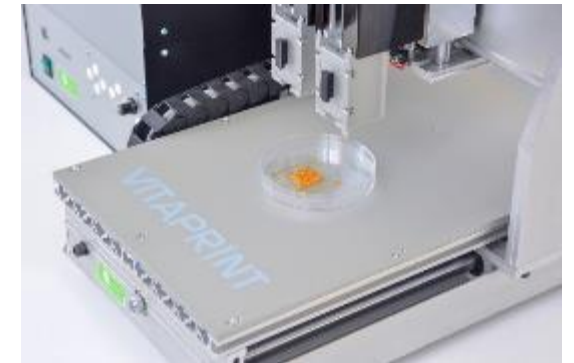
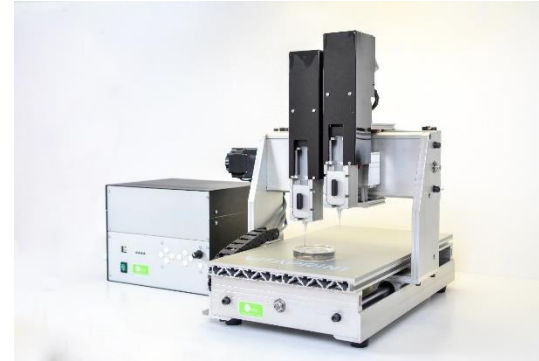
[FIND OUT MORE](#)

Vitaprint 3D Bioprinting

A full package of open 3D bioprinting including open, fully customizable, modular, easy to modify and cost effective hardware design, open methods (protocols of material preparation, parameter calibration and testing procedures) and open demo files.

Services:

- ✓ Electronics engineering
- ✓ Mechanical engineering
- ✓ Rapid prototyping
- ✓ Experimental testing for scientific applications



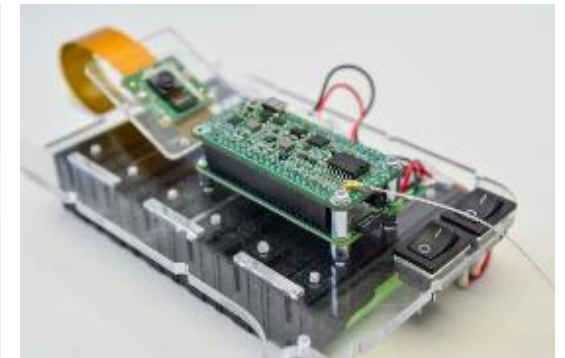
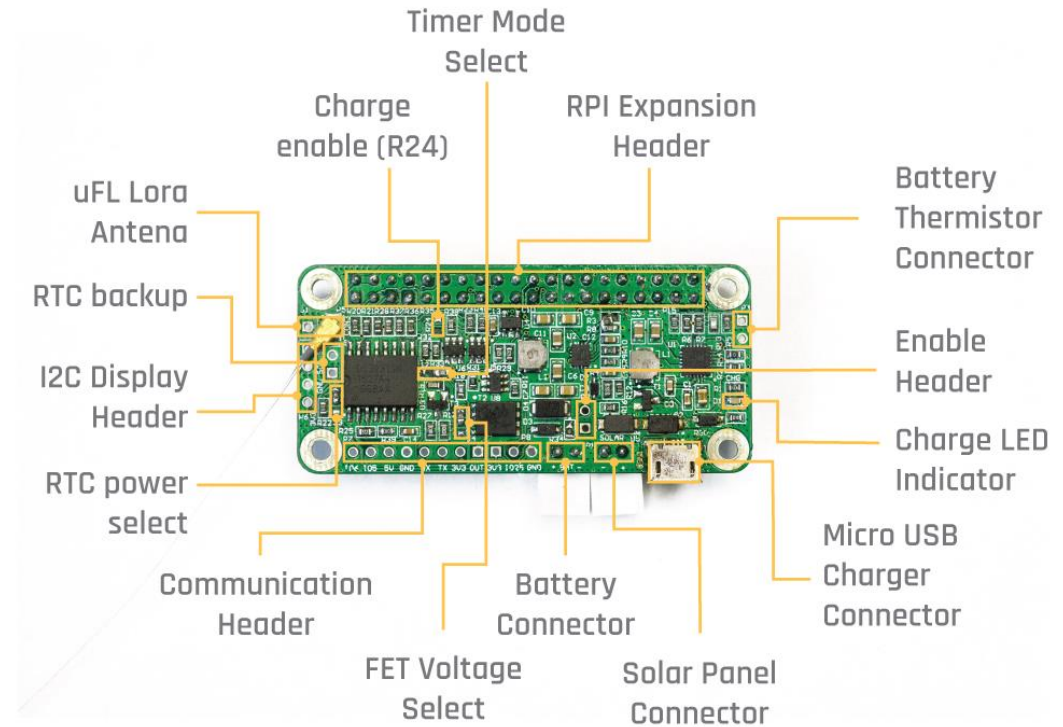
[FIND OUT MORE](#)

PiRA IoT Battery Pack

A universal solution for solar powered IoT devices, implementing all commonly required features - charging, battery monitoring, voltage regulation, power scheduling, battery protection, standard LiPo cell usage, and optional on board processor - that can be easily and rapidly integrated into target applications.

Services:

- ✓ Electronics engineering
- ✓ Software engineering
- ✓ Rapid prototyping
- ✓ Medium size series manufacturing



[FIND OUT MORE](#)

PiRA Zero

Arribada
FMP



Arribada
AMP



Arribada
PMP



Arribada
PitStop tag



Solarcast



Safecast Solarcast

Air quality sensor device, designed to operate off-grid and sense environmental parameters. With five key modules designed for maximal reuse: air sensor module, Geiger sensor module, battery power module, communications module, gateway module.

Services:

- ✓ Electronics engineering
- ✓ Mechanical engineering
- ✓ Rapid prototyping
- ✓ Small size series manufacturing



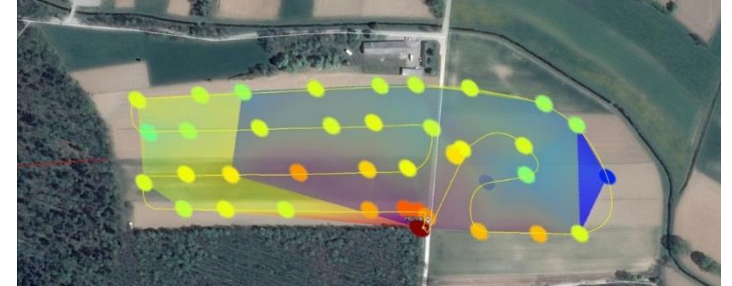
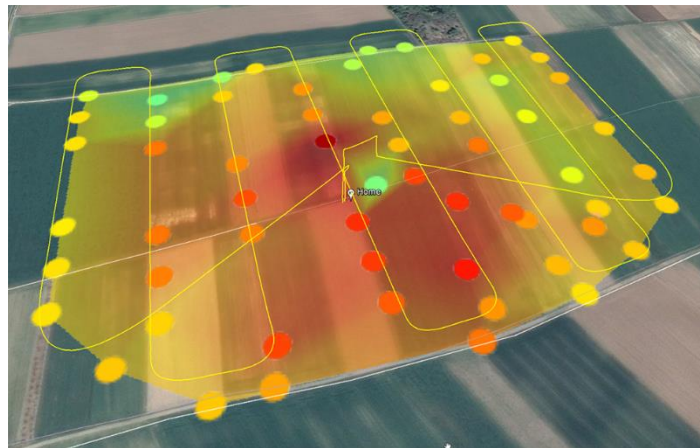
[FIND OUT MORE](#)

LoraWAN Drone Coverage Mapping

Automated drone-assisted network coverage mapping enables rapid roll-out of sensor networks in remote environments.

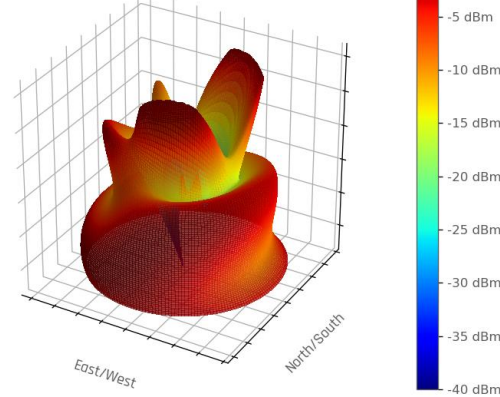
Services:

- ✓ Electronics engineering
- ✓ Mechanical engineering
- ✓ Rapid prototyping
- ✓ Technical supervision of experimental deployment

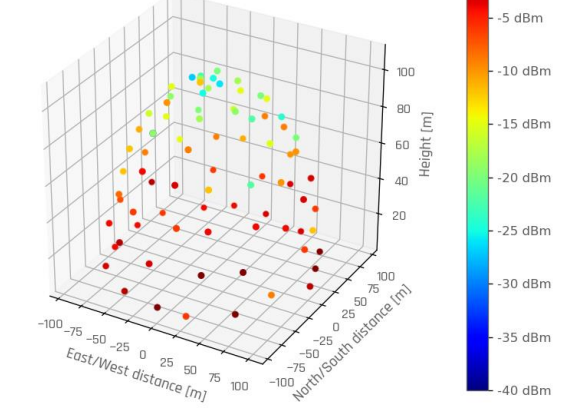


[FIND OUT MORE](#)

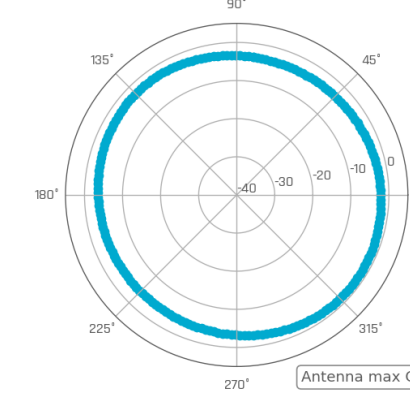
Antenna radiation pattern



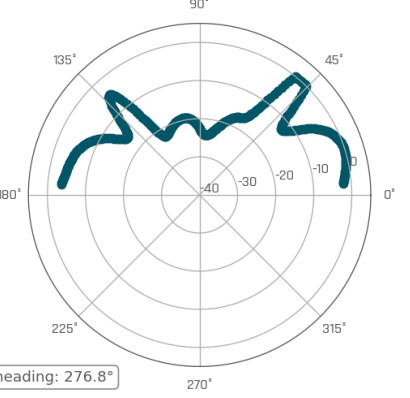
Drone measured antenna radiation



Antenna radiation XY plane

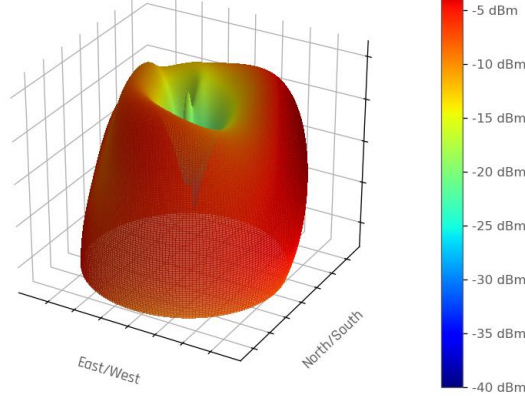


Antenna radiation XZ plane

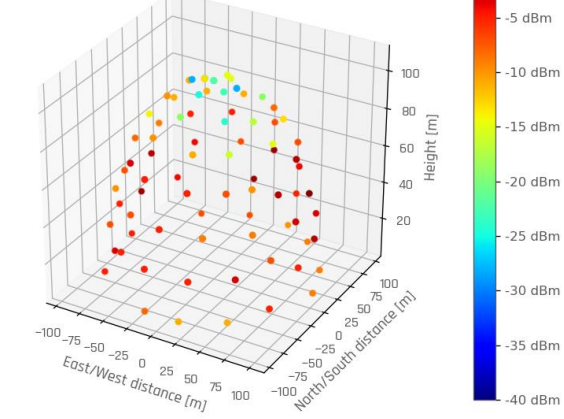


Antenna max GEO heading: 276.8°

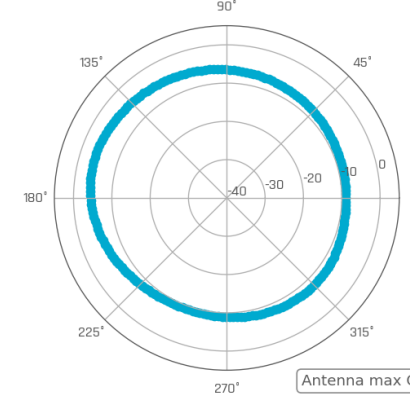
Antenna radiation pattern



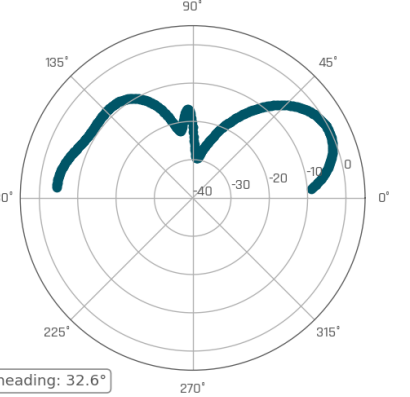
Drone measured antenna radiation



Antenna radiation XY plane



Antenna radiation XZ plane



Antenna max GEO heading: 32.6°

Glia Pulse Oximeter

Cost-effective medical pulse oximeter, designed for production in import-limited environments. Solution is optimized for 3D printing production enabling maximal servicability over long use-cycles.

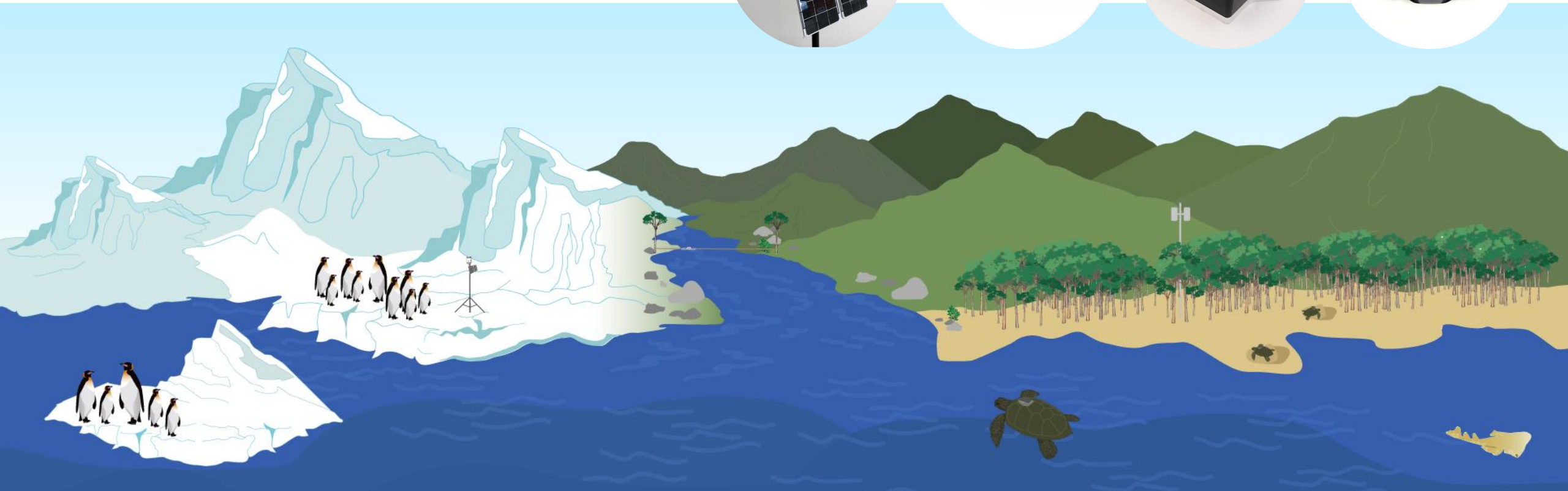
Services:

- ✓ Electronics engineering
- ✓ Software engineering
- ✓ Mechanical engineering
- ✓ Rapid prototyping
- ✓ Small size series manufacturing



[FIND OUT MORE](#)

Conservation Tech

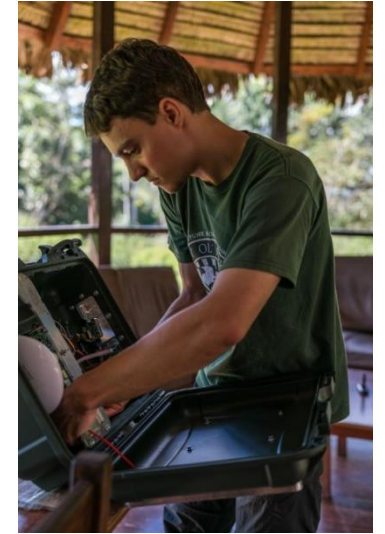
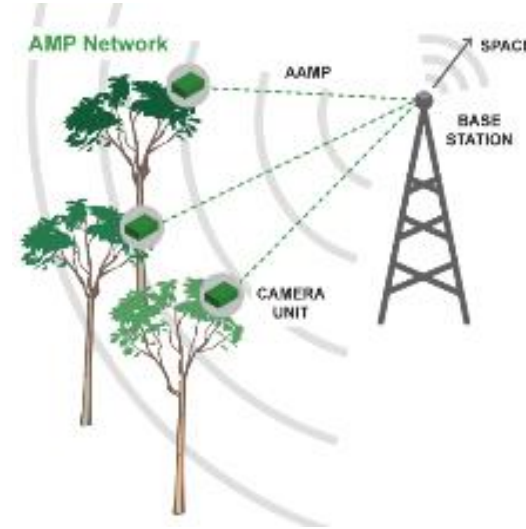


AAMP - Arribada Arboreal Monitoring Platform

Camera based AAMP with WiFi connectivity and solar power for remote area deployment, linking individual locations together using line-of-sight radio hubs. Each hub stores and forwards data received from the camera to a central location.

Services:

- ✓ Electronics engineering
- ✓ Mechanical engineering
- ✓ Rapid prototyping
- ✓ Small size series manufacturing
- ✓ Technical supervision of experimental deployment



[FIND OUT MORE](#)

AFMP - Arribada Freshwater Monitoring Platform

Solar-powered standalone water level monitoring and camera device for remote areas with satellite and LoraWAN connectivity for instant deployment anywhere in the world.

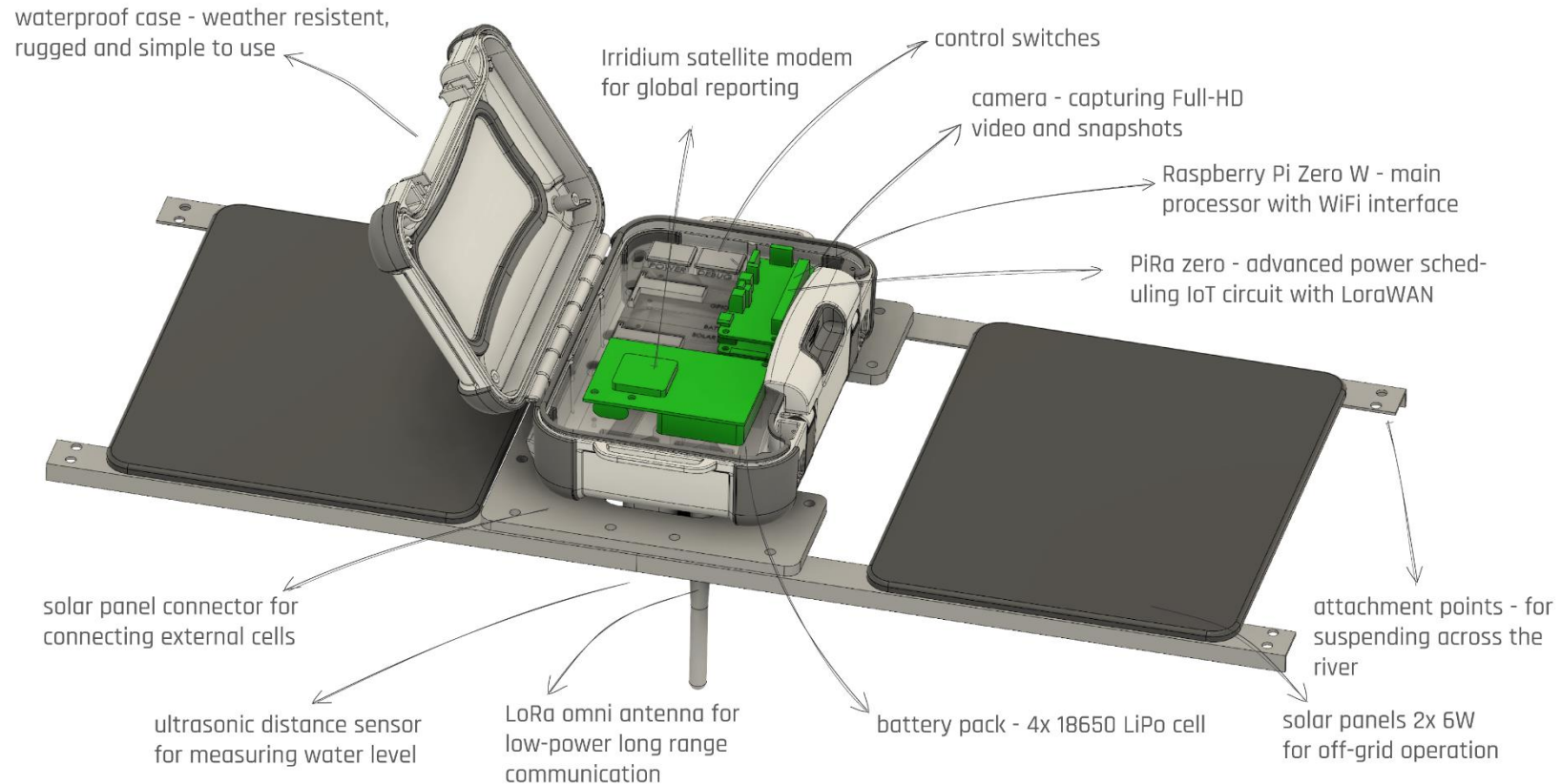
Services:

- ✓ Electronics engineering
- ✓ Mechanical engineering
- ✓ Rapid prototyping
- ✓ Small size series manufacturing



[FIND OUT MORE](#)

AFMP disassembly



APMP - Arribada Penguin Monitoring Platform

Rugged solar-powered camera unit for deployment on Antarctica, providing year-round periodic snapshots of the surrounding area with edge-processing capabilities.

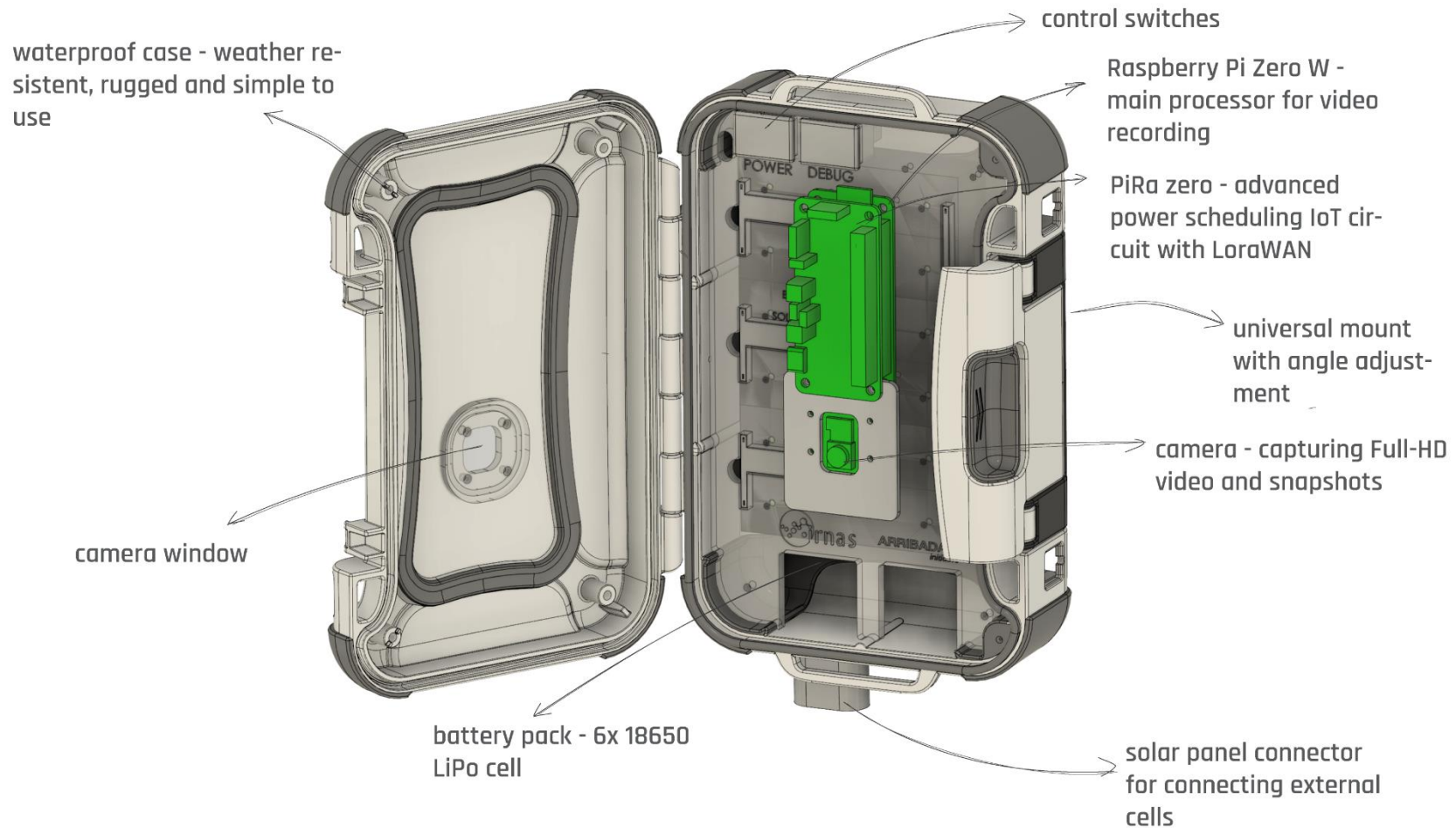
Services:

- ✓ Electronics engineering
- ✓ Mechanical engineering
- ✓ Rapid prototyping
- ✓ Small size series manufacturing



[FIND OUT MORE](#)

APMP disassembly



Arribada Pitstop Turtle Tag

Durable and water-proof turtle cameras and tags, used to track the movement of sea turtles and collect the information necessary to design better strategies for their conservation.

Services:

- ✓ Electronics engineering
- ✓ Mechanical engineering
- ✓ Rapid prototyping
- ✓ Small size series manufacturing
- ✓ Technical supervision of experimental deployment

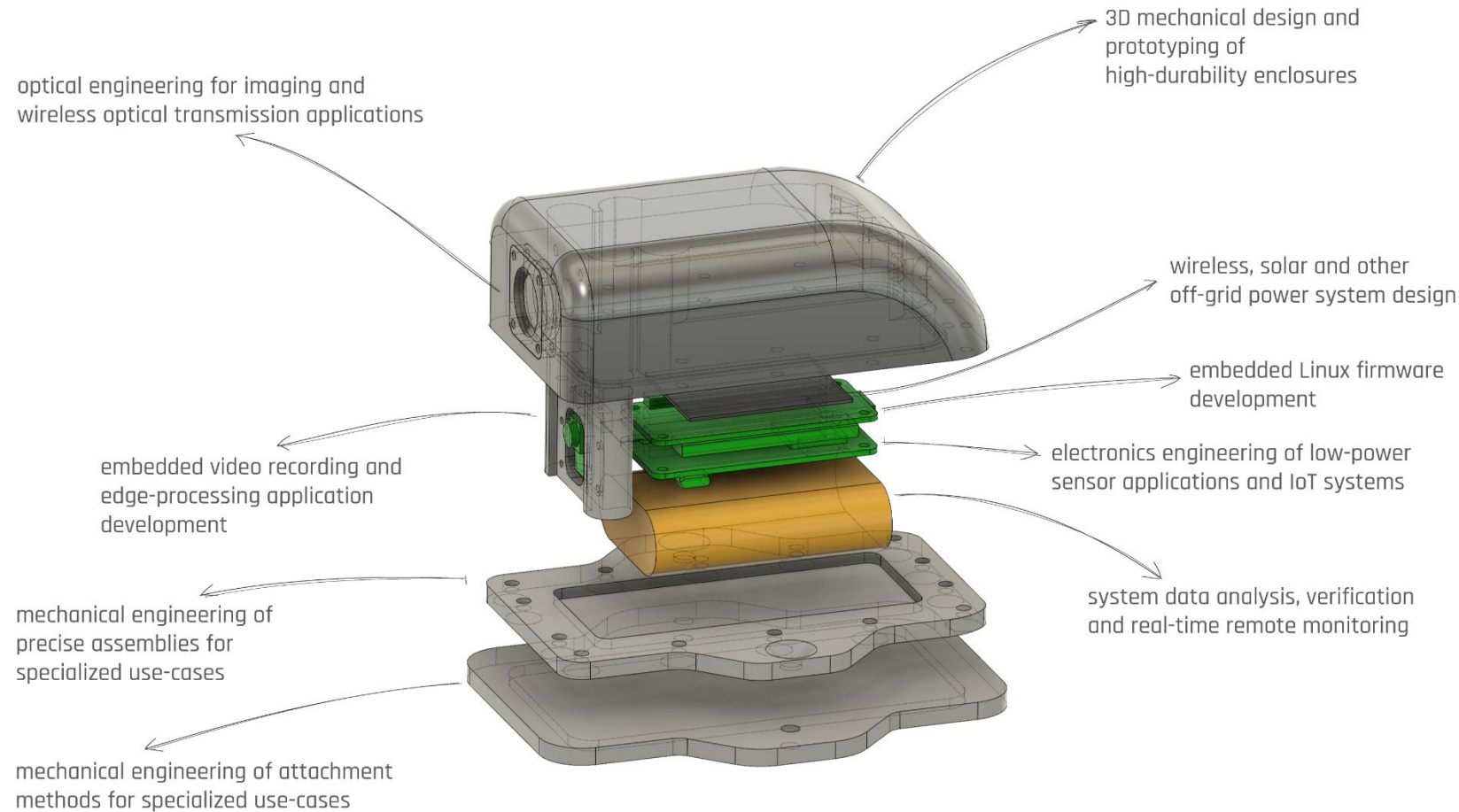


[FIND OUT MORE](#)



[VIDEOS FROM TURTLE CAMERAS](#)

Pitstop Turtle Tag Development Workflow





Thank you!

Connect

@institute_irnas

info@irnas.eu

