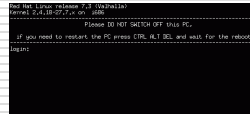


Computer use at the ICTP

By Johannes Grassberger,
Scientific Computer Section

PC Login

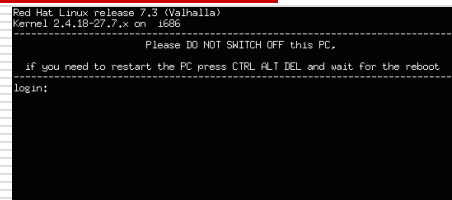
- Linux
- Windows



Computer labs

- Main building (MB):
Ground floor: MBlab, Blue room
Level 2S: one on each side/staircase
- Adriatico Guest House (AGH):
Level 1S: Eklund lab, Infolab, area in front of Infolab
- Galileo Guest House (GGH):
Entrance level: near the reception

Linux login



- To switch to Windows, press Ctrl-Alt-Del

Equipment

- Mostly PCs
- A few UNIX terminals in
MB level 2S cafeteria side
AGH level 1S in front of Infolab
GGH entrance level
- 1 Mac in Blue room (MB entrance level)

Windows login



- *Log on to* field must be ICTPDOMAIN
- To switch to Linux, click on *Shut Down...* and choose *Restart*

Sun UNIX terminals



- In AGH level 1S and MB level 2S (cafeteria side)
-

Home directory

- Accessible from all computers
 - Standard capacity ("quota"): 100 MB
 - Default login directory for Linux and UNIX
 - In Windows, mapped as G: drive (after double-clicking on the *ICTP Home Directory* icon)
-

Changing the password

- Use the `passwd` command in Linux or
 - Go to <https://www.ictp.trieste.it:20000/>
-

E-mail address

- Your e-mail address is username@ictp.trieste.it
 - There are usually several aliases based on your real name, like:
lastname@ictp.trieste.it
firstname.lastname@ictp.trieste.it
initial.lastname@ictp.trieste.it
-

Account facilities

- Personal data area ("home directory")
 - E-mail address
 - Use of Windows, Linux, UNIX
 - Printing
-

Mail programs

- In Linux/UNIX, use the program pine.
 - In Windows, do NOT use any mail client, e.g. Outlook Express. Instead:
 - Either run the terminal program to log in to a UNIX host (use one of these: `unix1`, `unix2`)
 - Or use the web interface <https://www.ictp.trieste.it/webmail/>
-

Printing

- Identify the printer you want to use
 - Check its name (mb2, br1, agh3 etc.)
 - UNIX print commands usually work with the option *-Pprintername*
 - In Windows, choose the printer from the print dialog box.
-

Connecting laptops: configuration

- Web browsers must use our proxy: proxy.ictp.trieste.it, port 3128 or via automatic setting: <http://www.ictp.trieste.it/proxy.pac>
 - SMTP server for mail programs should be: smtp.ictp.trieste.it
-

Connecting laptops: locations

- Rooms in Guest Houses:
1 active network socket per room
no cable (for sale in ICTP mail offices)
 - Dedicated desk spaces in or in front of computer laboratories
network cables already attached to wall outlets
-

On-line information

On the ICTP home page

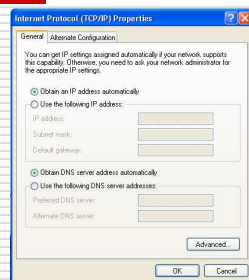
<http://www.ictp.trieste.it/>

scroll to the bottom and click on

[Computers & Networks](#)

Connecting laptops: configuration

- IP numbers must be obtained dynamically (DHCP)



Help desk

- MB, ground floor, Scientific Computer Section, room number 2
 - Time table: Monday to Friday, 10:30-12:00 and 13:30-15:00
-

Contacting us by e-mail

Use one of these addresses:

- accounts account related matters
 - computer-hw hardware failures
 - scs-print Printing problems
 - email e-mail related problems
 - network network problems
 - software software questions
 - consult otherwise/if in doubt
-

Contacting us by phone

- 353 for computer help
 - 999 only for emergencies
this means: problems affecting a large number of people, not single users
-

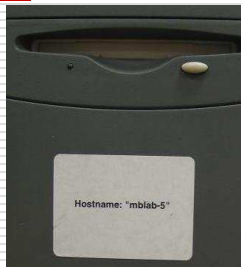
Contacting us by e-mail

In the Subject line,
please specify

- Building
- Room or area
- Host/printer name
- Operating system
- Some keyword(s)

For example:

MBlab/mblab-5: CD
drive broken



Requests via web interface

<https://scs/support/>

- Accessible after having submitted at least one request by e-mail
 - Trailing / in URL is mandatory
 - Allows checking status of requests and submitting new ones
-