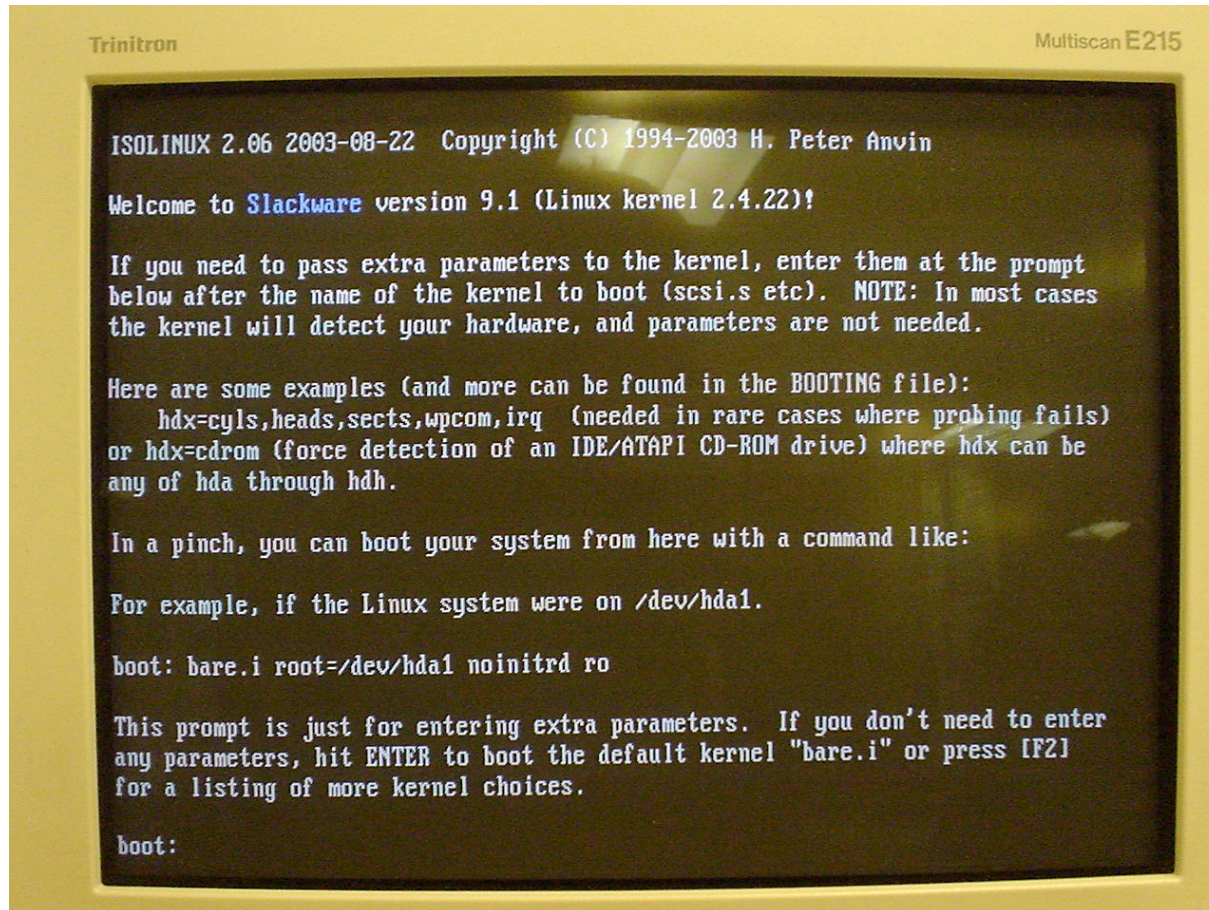
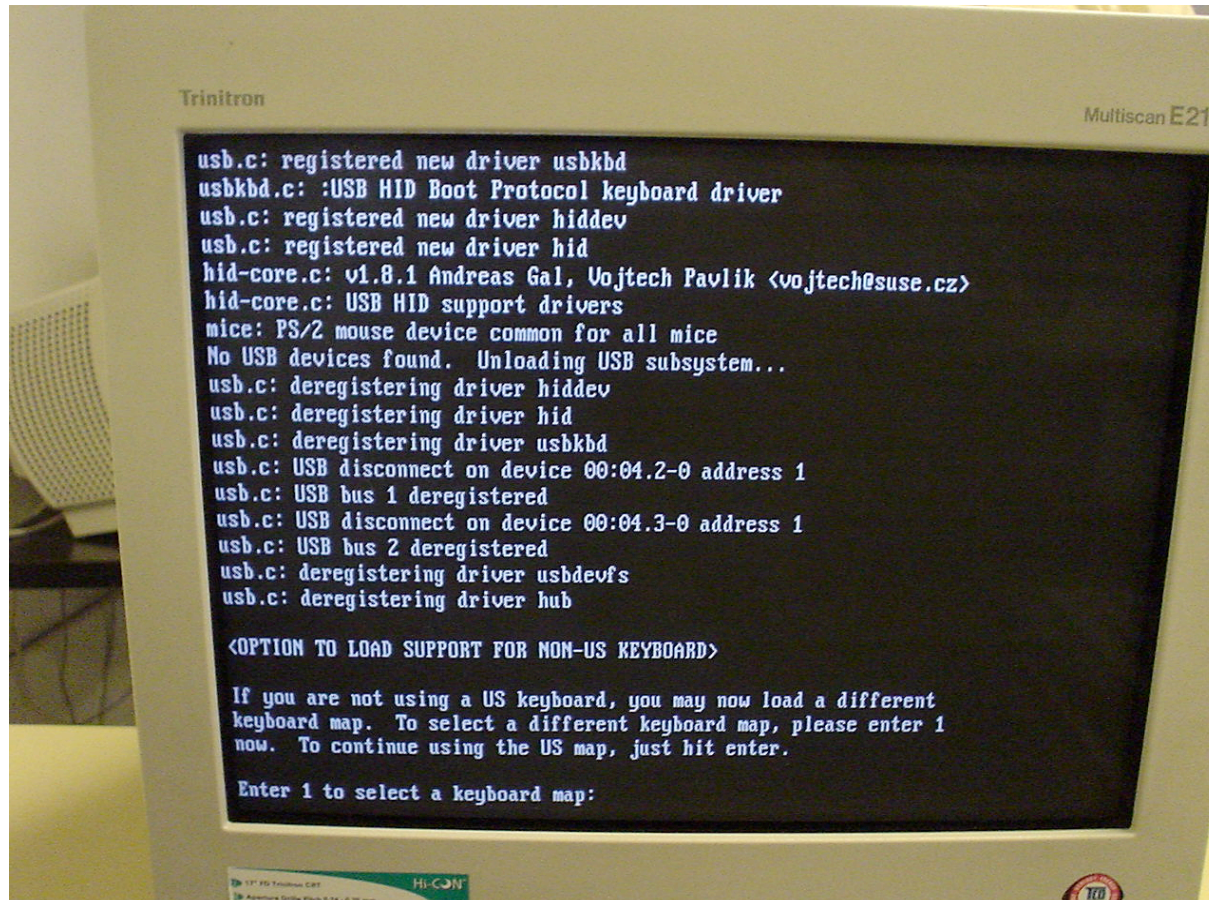


Slackware 9.1 Installation



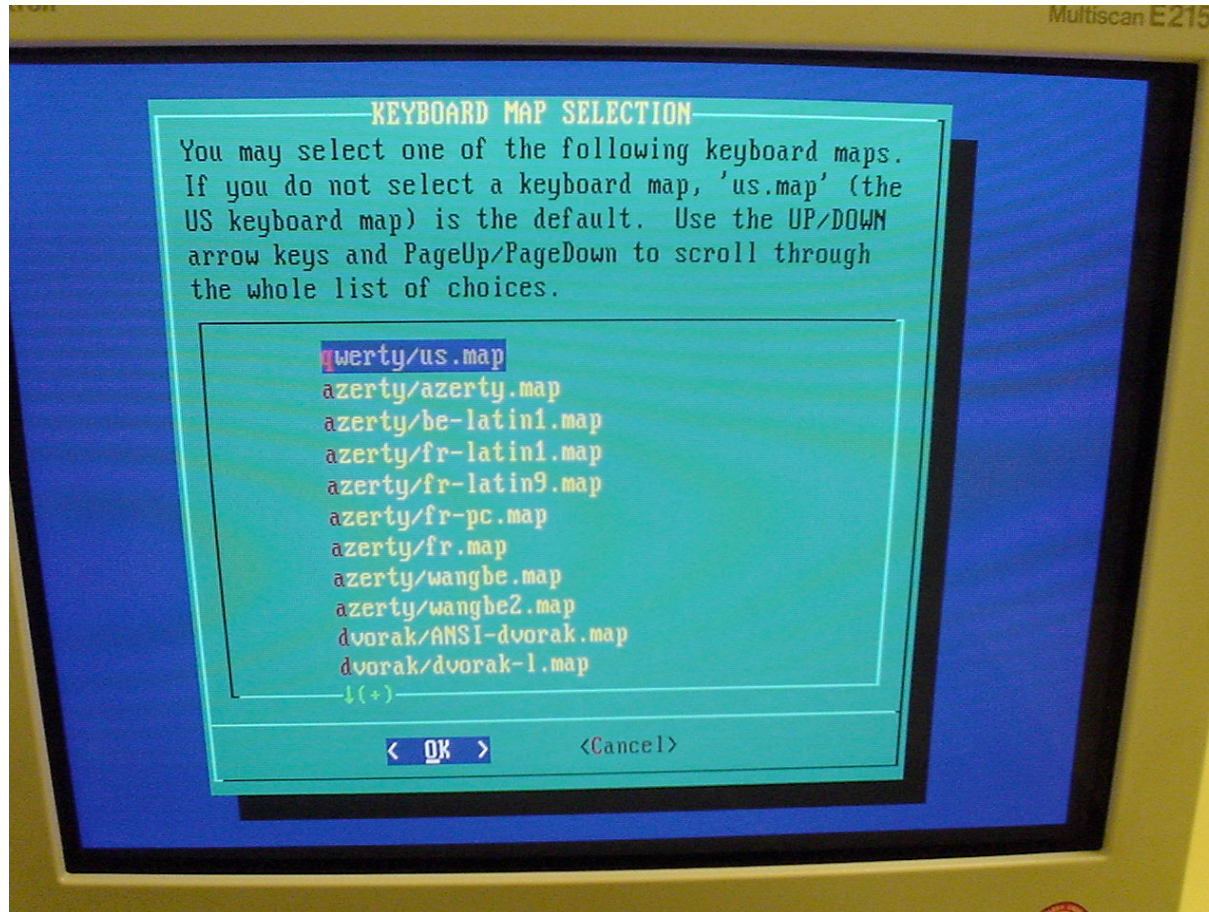
First prompt in the installation process.

Slackware 9.1 Installation



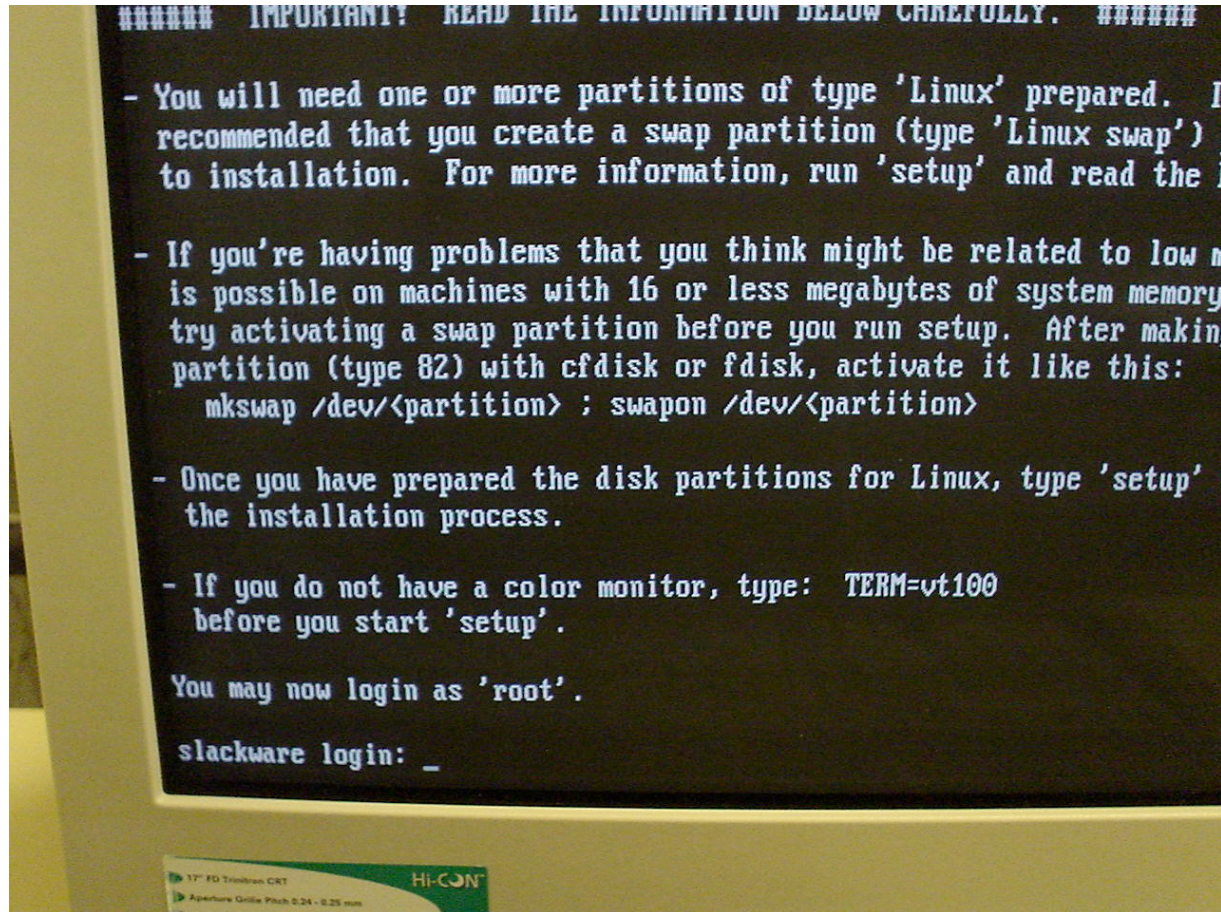
Prompt for keyboard selection

Slackware 9.1 Installation



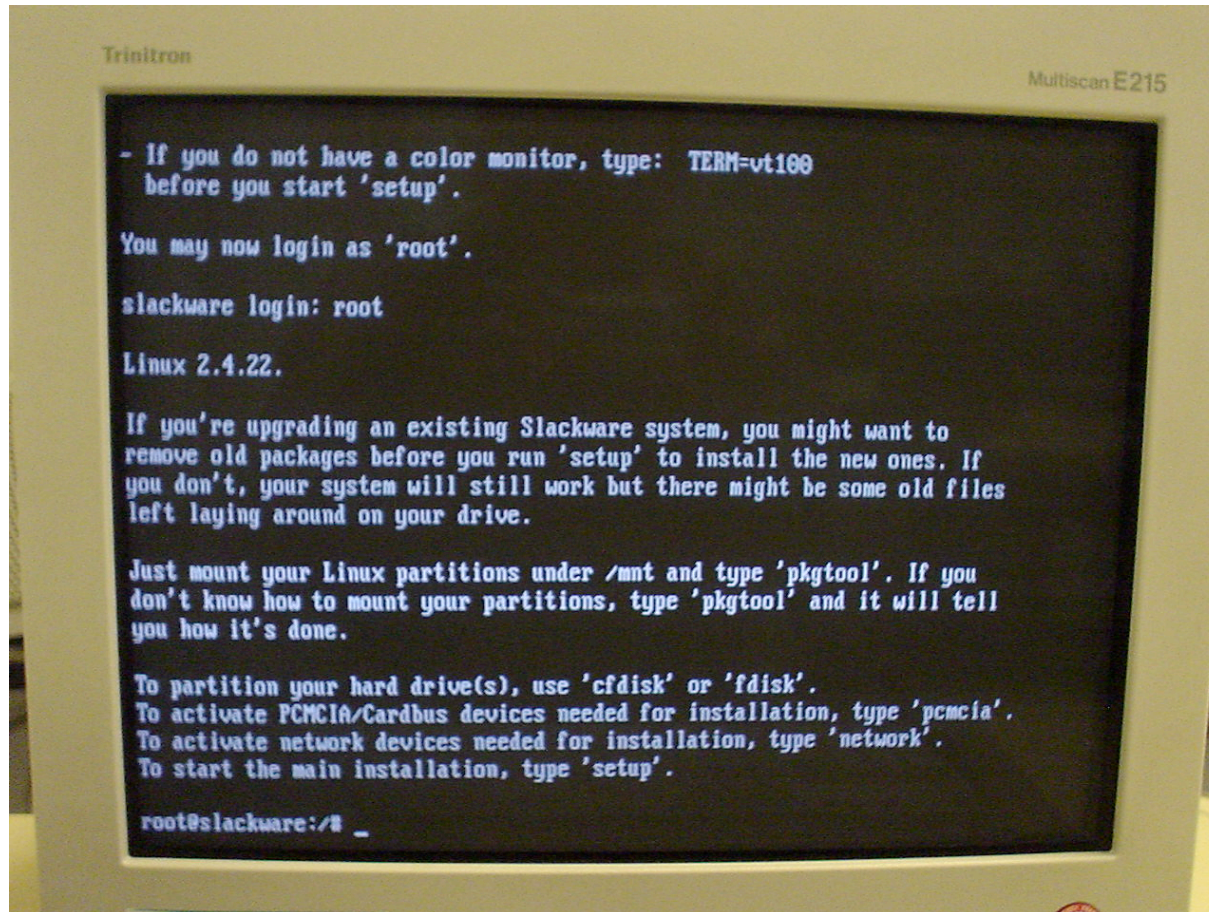
Selection Keyboard window

Slackware 9.1 Installation

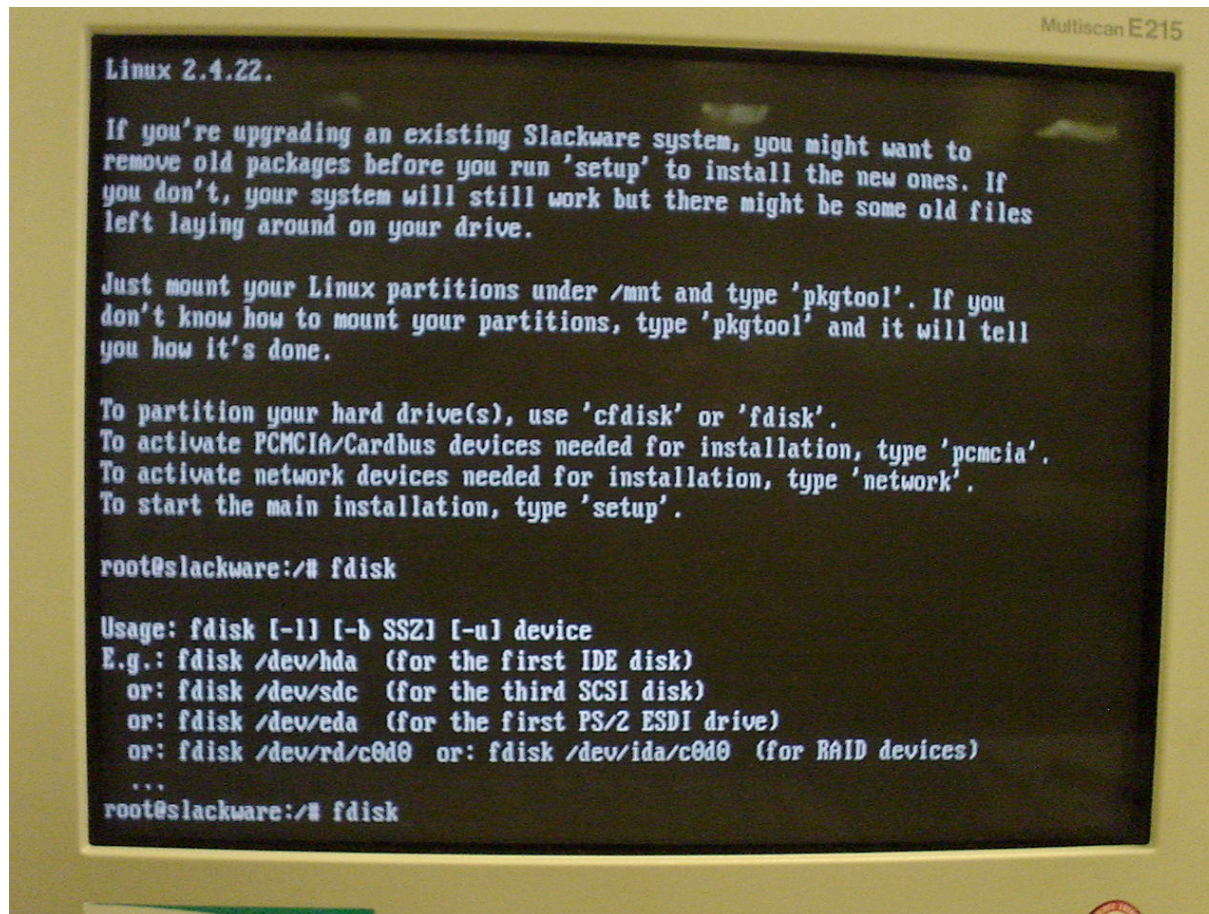


First user selection (root)

Slackware 9.1 Installation



Slackware 9.1 Installation



```
Linux 2.4.22.

If you're upgrading an existing Slackware system, you might want to
remove old packages before you run 'setup' to install the new ones. If
you don't, your system will still work but there might be some old files
left laying around on your drive.

Just mount your Linux partitions under /mnt and type 'pkgtool'. If you
don't know how to mount your partitions, type 'pkgtool' and it will tell
you how it's done.

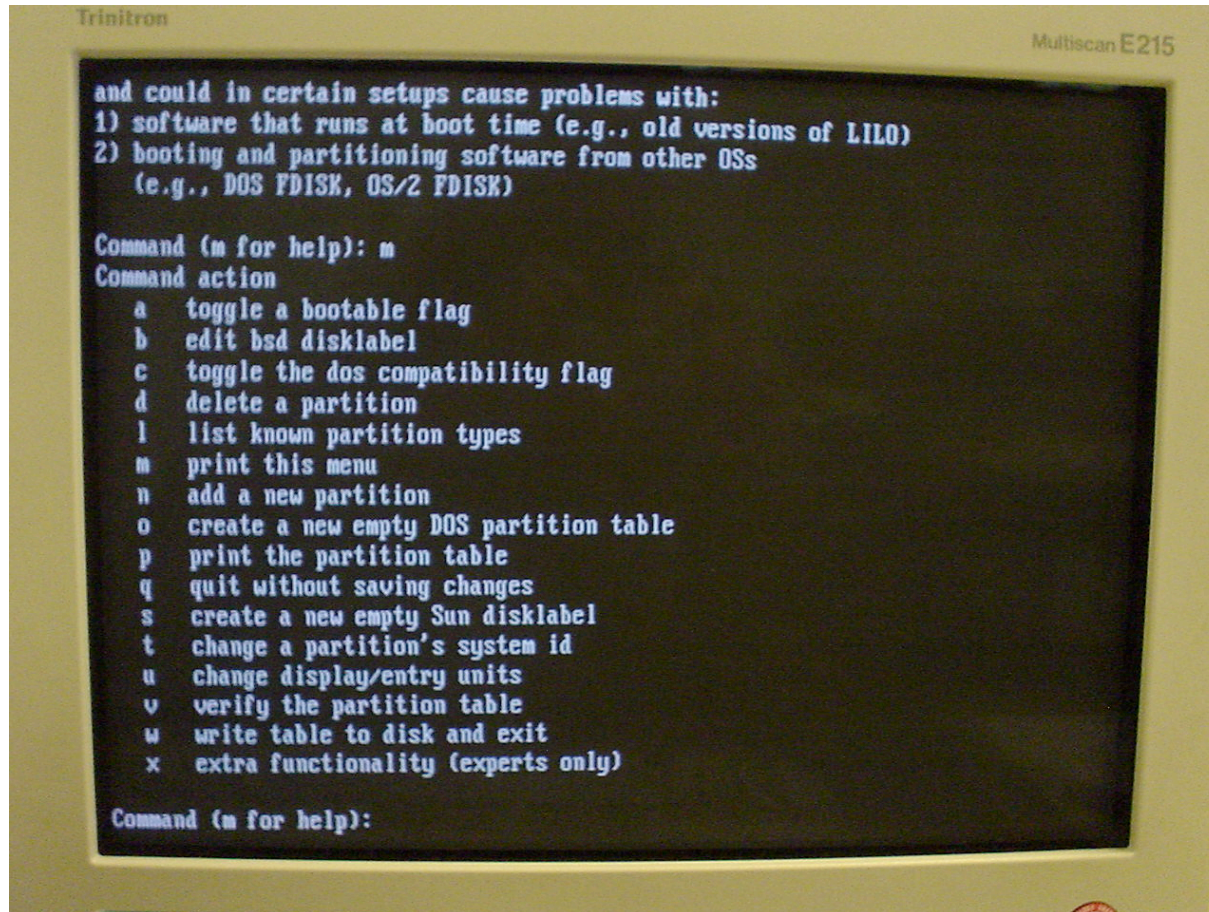
To partition your hard drive(s), use 'cfdisk' or 'fdisk'.
To activate PCMCIA/Cardbus devices needed for installation, type 'pcmcia'.
To activate network devices needed for installation, type 'network'.
To start the main installation, type 'setup'.

root@slackware:~# fdisk

Usage: fdisk [-l] [-b SSZ] [-u] device
E.g.: fdisk /dev/hda (for the first IDE disk)
      or: fdisk /dev/sdc (for the third SCSI disk)
      or: fdisk /dev/eda (for the first PS/2 ESDI drive)
      or: fdisk /dev/rd/c0d0 or: fdisk /dev/ida/c0d0 (for RAID devices)
...
root@slackware:~# fdisk
```

fdisk prompt (fdisk /dev/hda)

Slackware 9.1 Installation



```
Trinitron Multiscan E215
and could in certain setups cause problems with:
1) software that runs at boot time (e.g., old versions of LILO)
2) booting and partitioning software from other OSs
   (e.g., DOS FDISK, OS/2 FDISK)

Command (m for help): m
Command action
  a  toggle a bootable flag
  b  edit bsd disklabel
  c  toggle the dos compatibility flag
  d  delete a partition
  l  list known partition types
  m  print this menu
  n  add a new partition
  o  create a new empty DOS partition table
  p  print the partition table
  q  quit without saving changes
  s  create a new empty Sun disklabel
  t  change a partition's system id
  u  change display/entry units
  v  verify the partition table
  w  write table to disk and exit
  x  extra functionality (experts only)

Command (m for help):
```

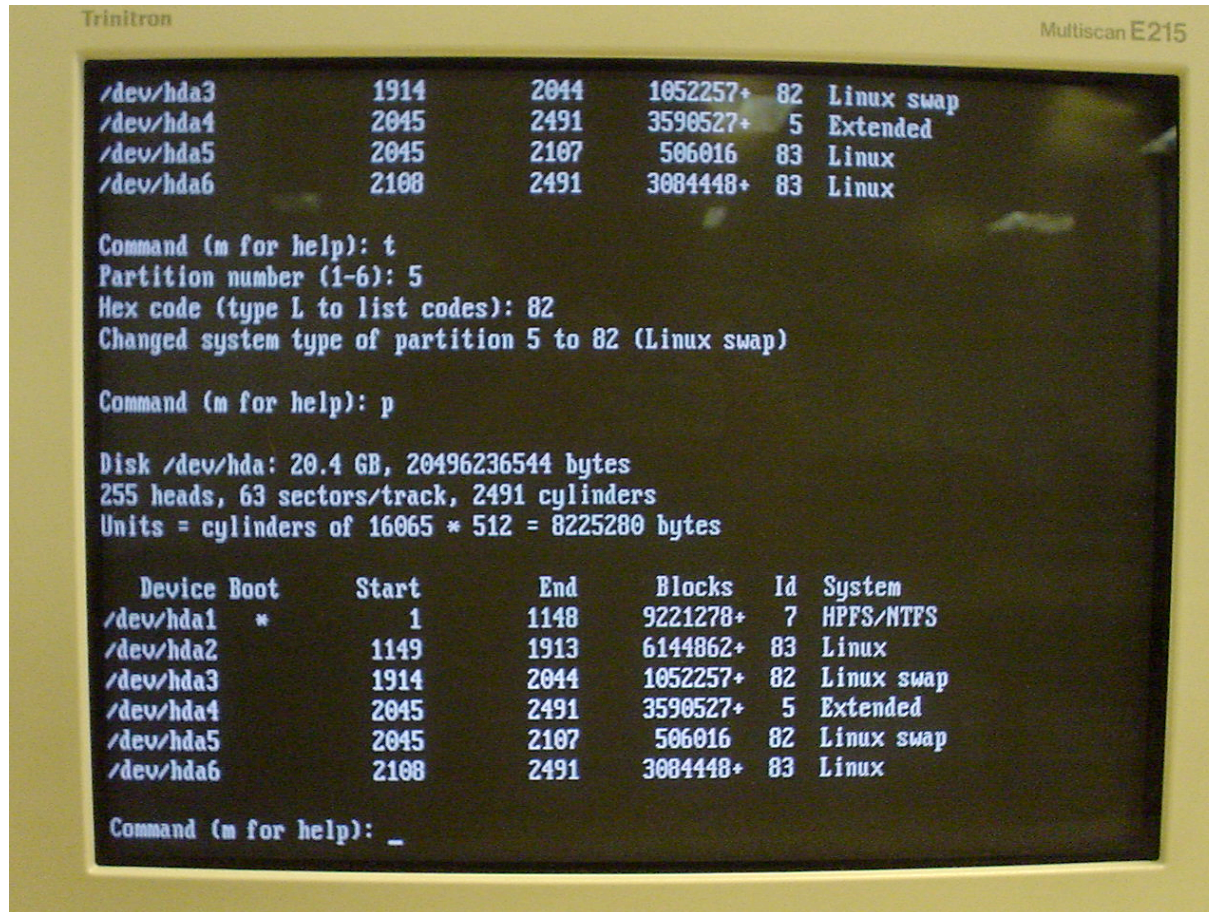
fdisk option list

Slackware 9.1 Installation

Partition information:

- Swap partition (type 82) = at least same RAM size.
- Linux native (type 83) = All available space in disk.

Slackware 9.1 Installation



```
Trinitron Multiscan E215
/dev/hda3      1914      2044      1052257+  82  Linux swap
/dev/hda4      2045      2491      3590527+  5   Extended
/dev/hda5      2045      2107       506016   83  Linux
/dev/hda6      2108      2491      3084448+  83  Linux

Command (m for help): t
Partition number (1-6): 5
Hex code (type L to list codes): 82
Changed system type of partition 5 to 82 (Linux swap)

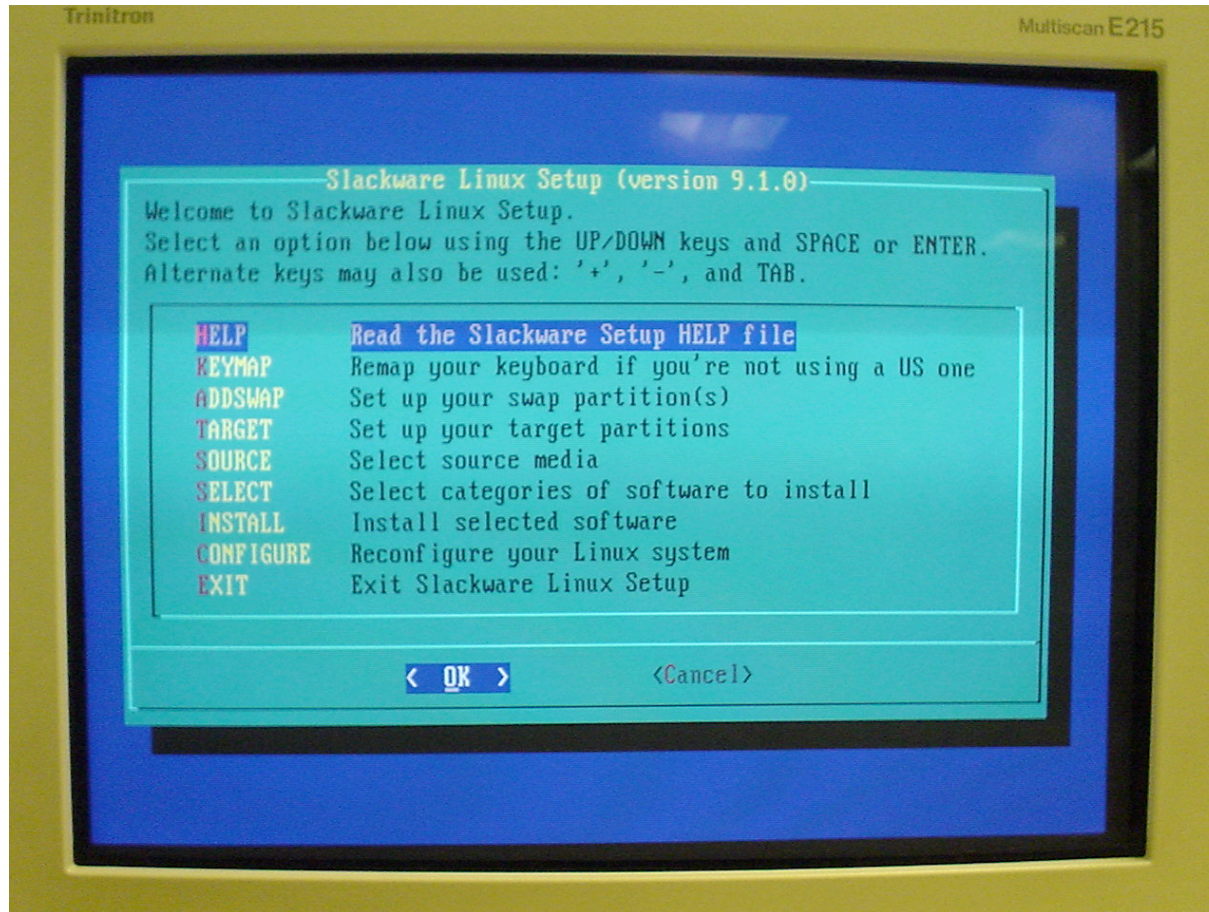
Command (m for help): p
Disk /dev/hda: 20.4 GB, 20496236544 bytes
255 heads, 63 sectors/track, 2491 cylinders
Units = cylinders of 16065 * 512 = 8225280 bytes

   Device Boot      Start         End      Blocks   Id  System
/dev/hda1  *            1          1148     9221278+   7  HPFS/NTFS
/dev/hda2             1149        1913     6144862+  83  Linux
/dev/hda3             1914        2044     1052257+  82  Linux swap
/dev/hda4             2045        2491     3590527+   5  Extended
/dev/hda5             2045        2107       506016   82  Linux swap
/dev/hda6             2108        2491     3084448+  83  Linux

Command (m for help): _
```

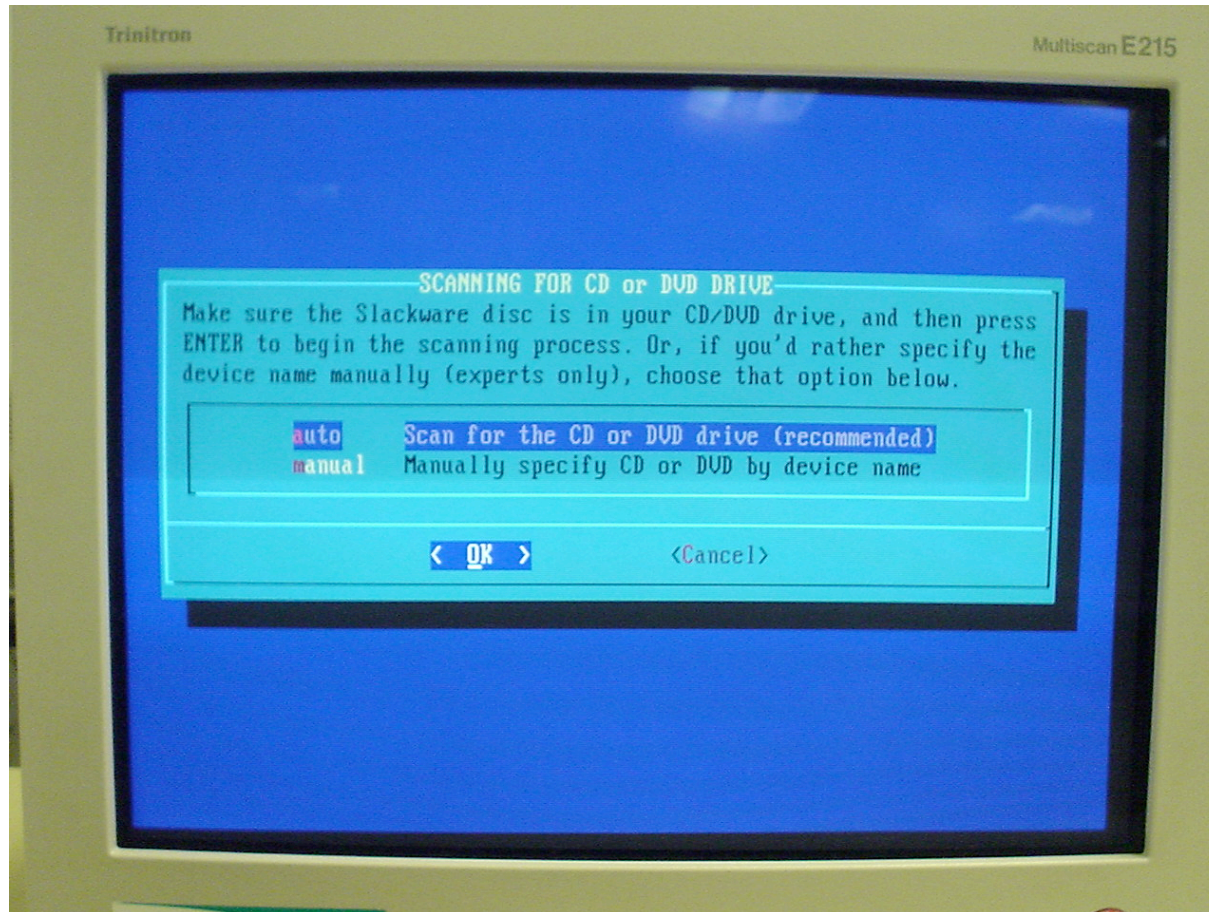
Partition information

Slackware 9.1 Installation



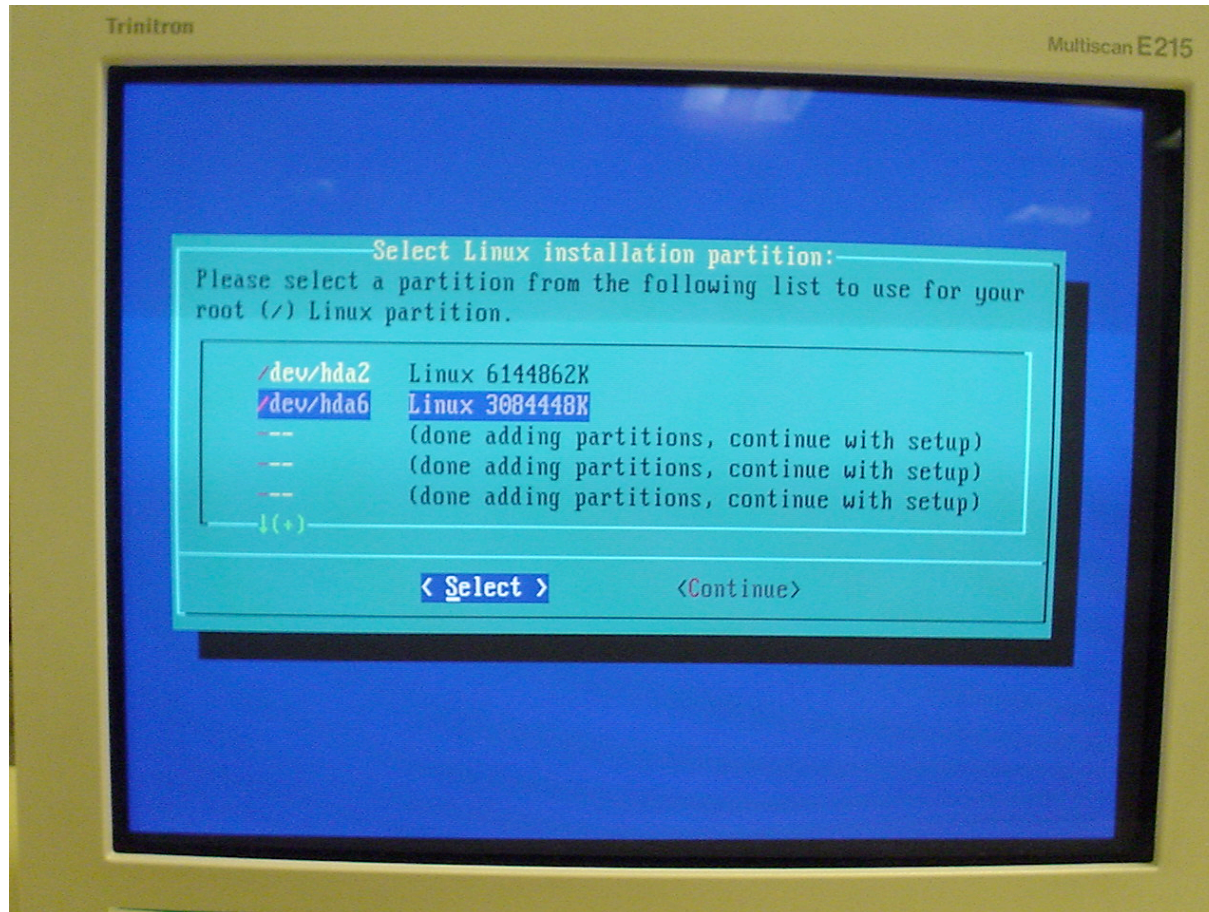
Setup Menu

Slackware 9.1 Installation



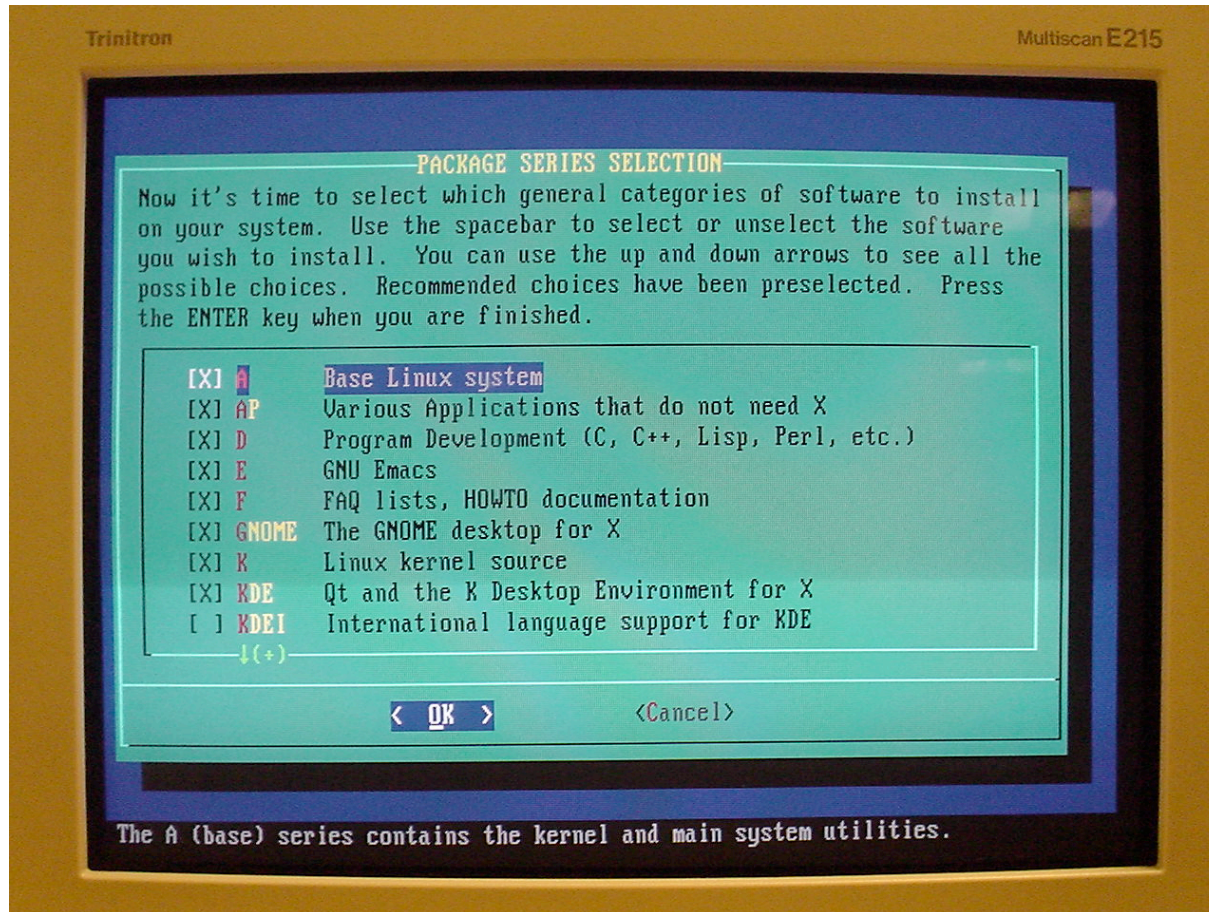
Source installation selection

Slackware 9.1 Installation



Target installation selection

Slackware 9.1 Installation



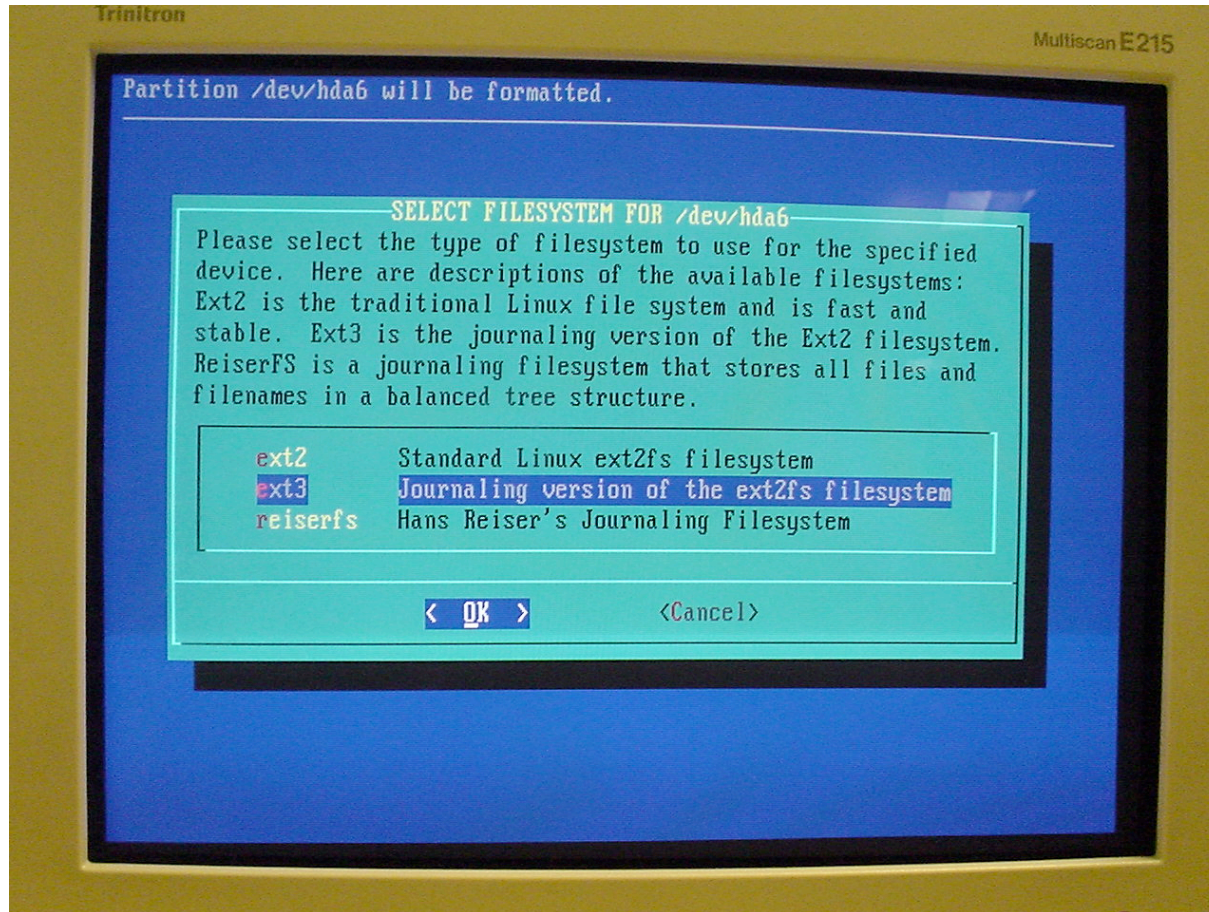
Installation package selection

Slackware 9.1 Installation



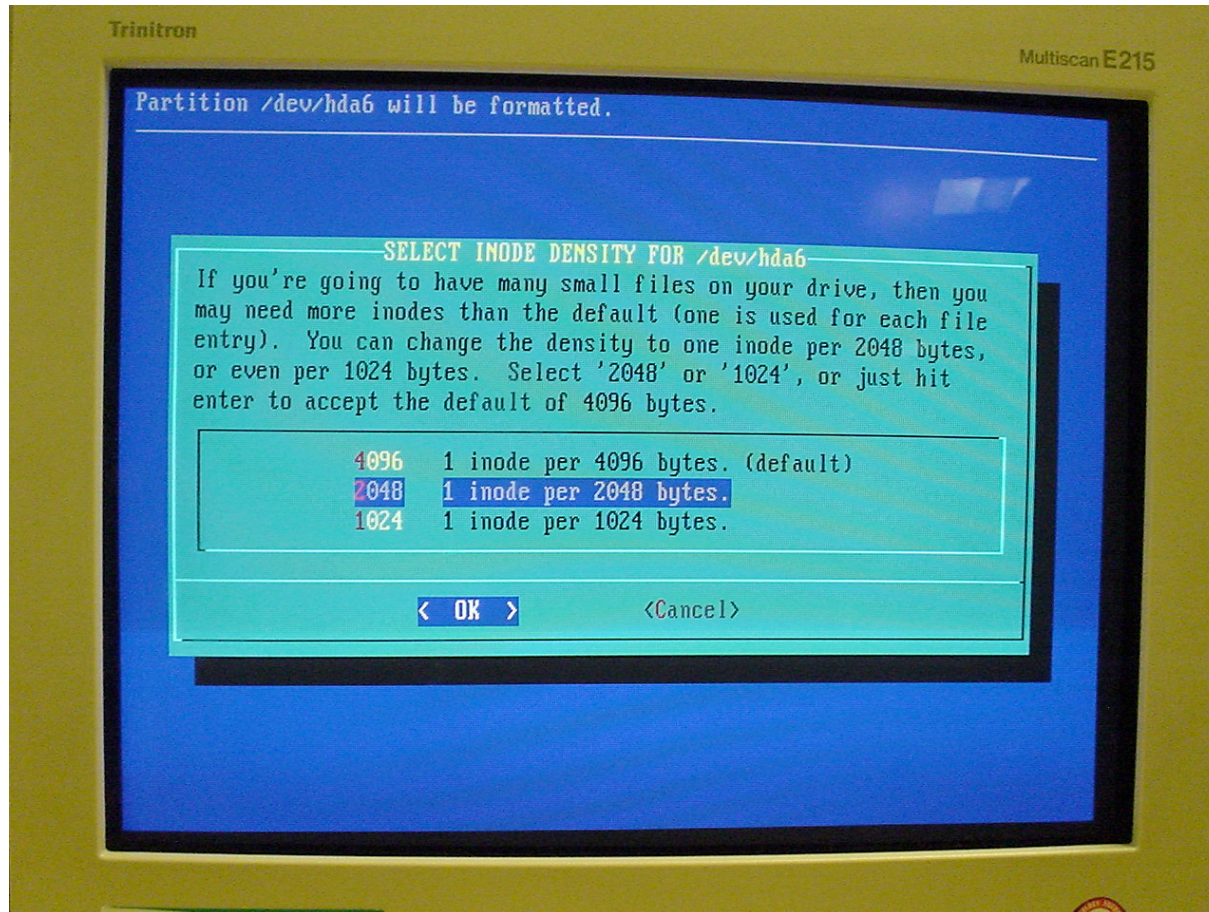
Format type selection

Slackware 9.1 Installation



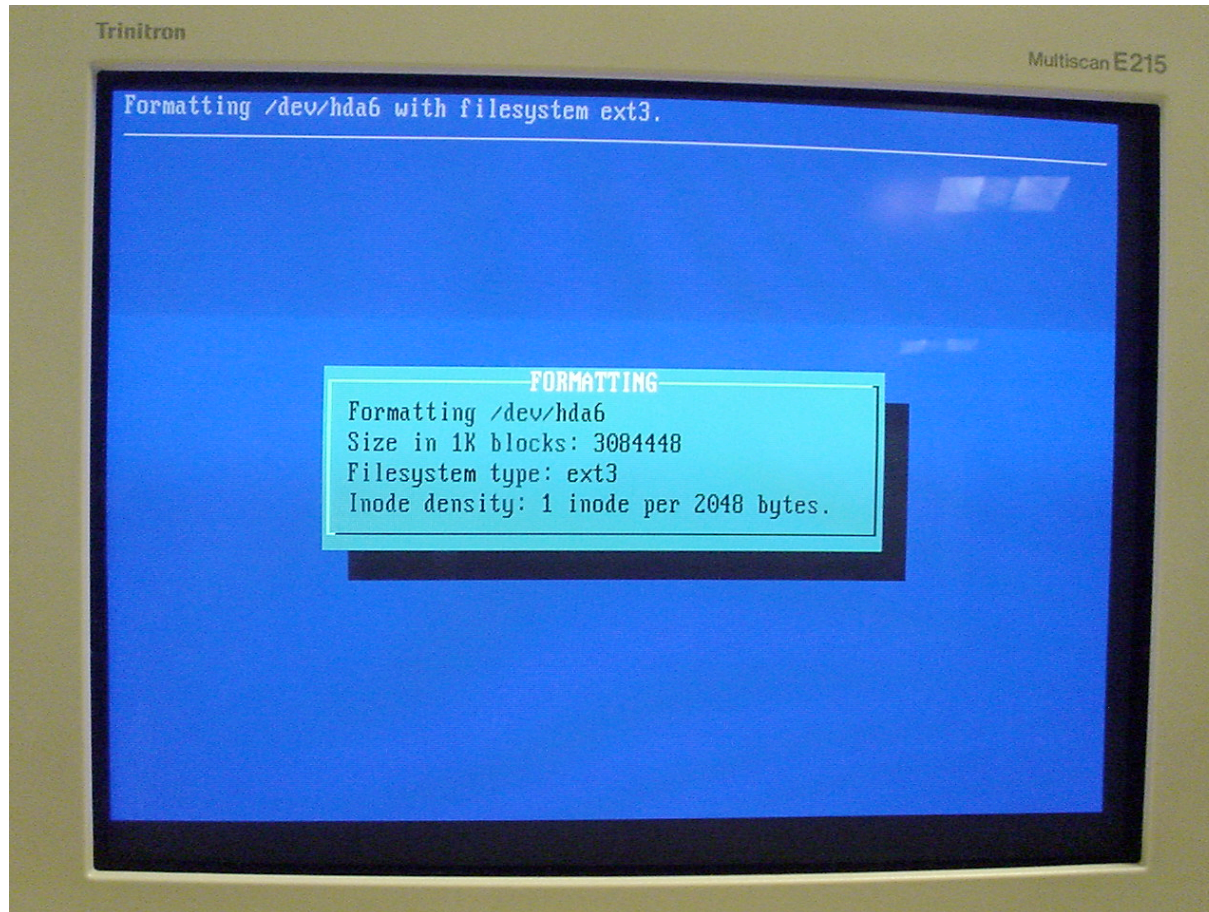
File system selection

Slackware 9.1 Installation



Format density selection

Slackware 9.1 Installation



Formatting process