



ORiNOCO™ RG-1000 Residential Gateway

High-Speed Wireless Connectivity for the Home and SO/HO

This high-speed networking system provides wireless connectivity to Internet service providers and enables sharing of various computer peripherals from anywhere within the home or small office. Operating in the unlicensed 2.4 GHz band, the ORiNOCO RG-1000 can transmit through walls and floors, giving you the freedom to roam up to 150 meters at 11 Mbit/s, indoors or out.

The RG-1000 acts as a central base station for multiple wireless users, each using a PC radio card. It provides Internet sharing using Network Address Translation (NAT). It includes a built-in 56K modem that provides Internet access through a regular phone line. It also supports an Ethernet port that allows you to connect to a

broadband cable, xDSL, or ISDN modem. The RG-1000 supports Wi-Fi compliant PC cards.

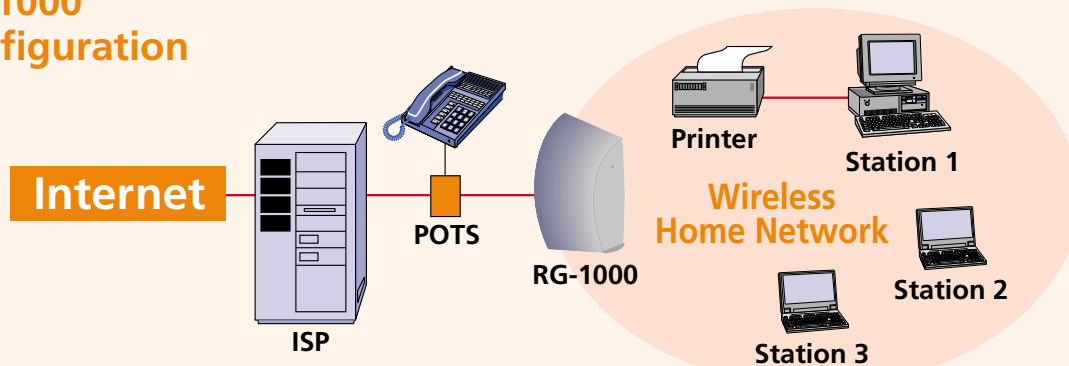
Plug-and-Play Access

Configuration wizard and management tools make installation process easy. Key to the system's easy installation is the NAT router with Dynamic Host Configuration Protocol (DHCP) functionality. Its DHCP function automatically configures an Internet Protocol address for users.

The RG-1000 is available as a package that includes a wall plug power supply, a standard RJ-11 modem cable, and a manual and configuration CD-ROM. A special start-up kit is available that includes the ORiNOCO PC Card.



Basic ORiNOCO RG-1000 Configuration



ORiNOCO RG-1000 Specifications

Features

- NAT
- DHCP
- WEP encryption RC4
- Auto Rate
- Communications Quality Indicator
- Link Quality
- Line Statistics

Built-in Modem/Interface

Telephone modem 56K V.90 RJ-11 socket

Ethernet Interface 10Base-T RJ-45 socket

Wireless Interface IEEE 802.11b

Radio Characteristics

Frequency Channels 2412, 2427, 2442, 2457

Modulation technique - Direct Sequence Spread Spectrum - CCK for 11 Mbit/s & 5.5 Mbit/s Transmit Rate
 - DQPSK for 2 Mbit/s Transmit Rate - DBPSK for 1 Mbit/s Transmit Rate

Spreading - 11-chip Barker Sequence

Bit Error Rate (BER) Better than 10⁻⁵

Nominal Output Power 15 dBm

Range in meters (feet)	11 Mbit/s	5.5 Mbit/s	2 Mbit/s	1 Mbit/s
Open	160 m (525 ft)	270 m (885 ft)	400 m (1300 ft)	550 m (1750 ft)
Semi-open	50 m (165 ft)	70 m (230 ft)	90 m (300 ft)	115 m (375 ft)
Closed	25 m (80 ft)	35 m (115 ft)	40 m (130 ft)	50 m (165 ft)

Physical Specifications

Dimensions (H x W x L) 208 x 52 x 155 mm

Weight 0.4 Kg

Environmental Specifications

	Temperature	Humidity
Operating	0° to 40°C	95% max. (no condensation allowed)
Storage	-10° to 50°C	95% max. (no condensation allowed)

Power Supply

Types AU, UK, US/JP, EU, External wall mount type power supply

Voltage 100v- 240v (±10%)(47 - 63 Hz)

The complete ORiNOCO package

In addition to the ORiNOCO home and SOHO RG-1000 unit, the package includes a wall plug power supply, a standard RJ-11 modem cable, a manual, and installation software on CD-ROM.

Comcodes

ORiNOCO Residential Gateway Startup Kit	
848 519 526	RG-1000 + PC Card + UK power supply
848 520 979	RG-1000 + PC Card + US/JP power supply
848 546 354	RG-1000 + PC Card + Eur power supply
848 546 347	RG-1000 + PC Card + Aus power supply
ORiNOCO Residential Gateway	
848 546 388	RG-1000 + US/JP power supply
848 546 396	RG-1000 + UK power supply
848 546 370	RG-1000 + Eur power supply
848 546 362	RG-1000 + Aus power supply

For additional information about this and other Lucent Technologies products and services, please contact your Lucent Technologies Sales Representative. You can also visit our web site at <http://www.lucent.com/orinoco> or call 1-800-928-3526

ORiNOCO and WaveLAN are trademarks or registered trademarks of Lucent Technologies Inc.

Ethernet is a registered trademark of Xerox Corporation.

This document is for planning purposes only and is not intended to modify or supplement any Lucent Technologies specifications or warranties relating to Lucent Technologies products or services.

Copyright © 2000 Lucent Technologies Inc. All rights reserved. Printed in U.S.A.

Lucent Technologies Inc.
Marketing Communications
6598 Issue 2 PJE 5/00

Lucent Technologies
Bell Labs Innovations



Benefits of the ORiNOCO Residential Gateway

- **Greater Mobility** — Wireless connectivity gives your family networking freedom to work, or play, from anywhere in your home or small office environment.
- **Installation Ease** — Built-in installation wizard takes you through the minimum setup requirements, smoothly and easily.
- **Lower Monthly Cost** — With the capability for multiple, simultaneous Internet sessions, you save the cost of additional ISP connections.
- **Improved Efficiency** — Share computer peripherals and data files from anywhere within your home network for greater efficiency.