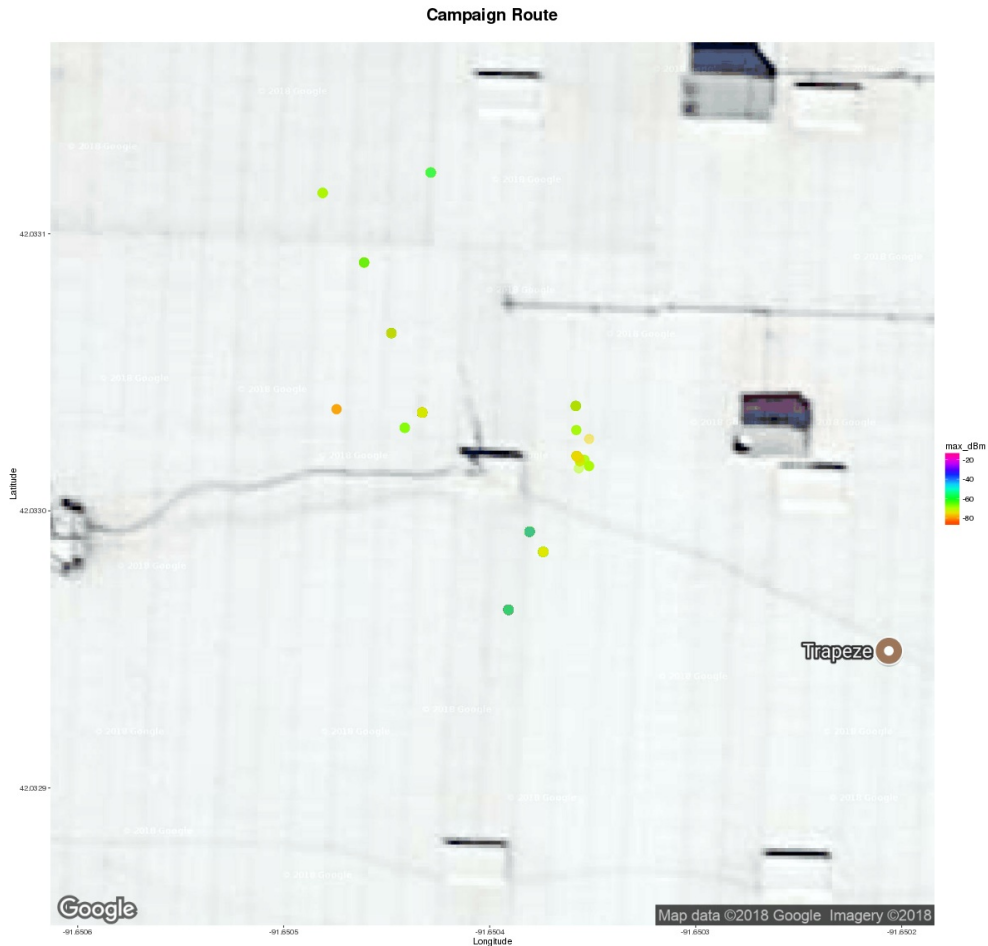


# Gsm frequencies analyzer

Measurements carried out with GsmTrack (<http://wireless.ictp.it/gsm/gsmtrack/>) over the specified frequency range and antenna. Remember that most TV signals are vertically polarized. The received signal level measured in dBm is dependent on the antenna gain and orientation.



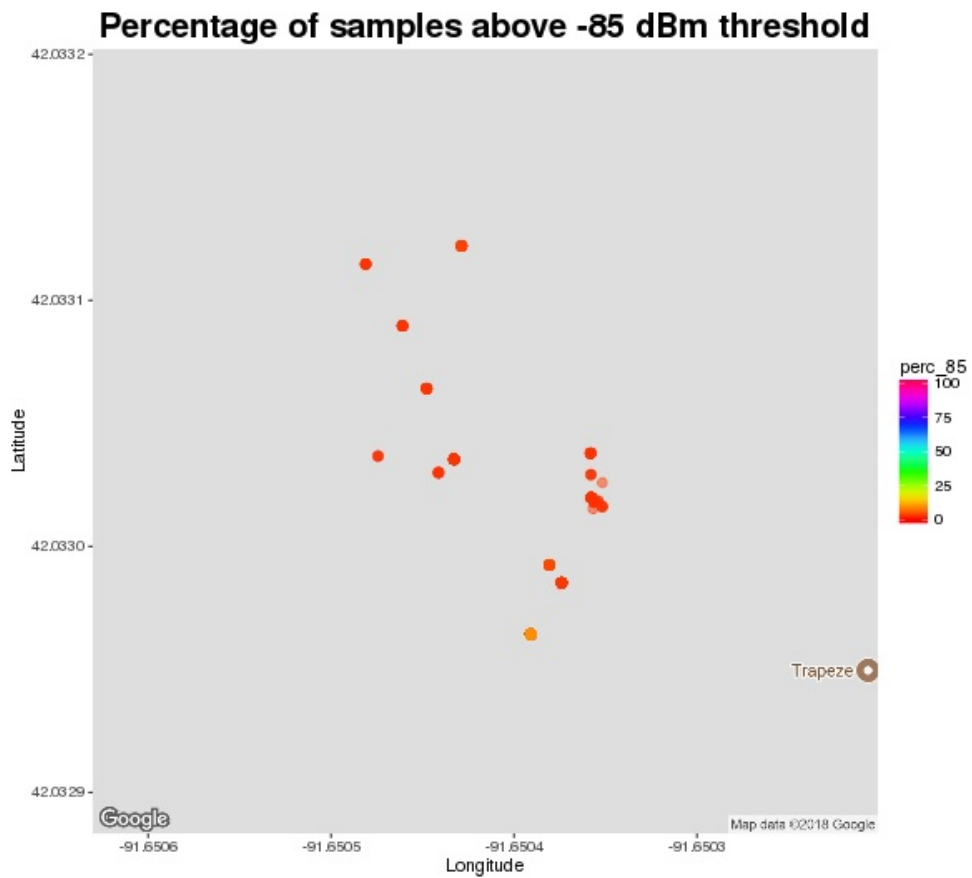
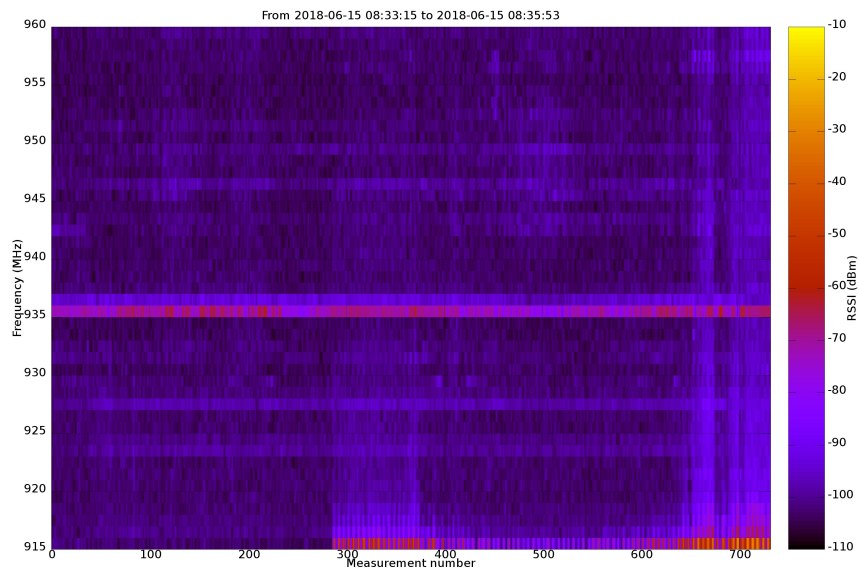
## Campaign measurements info

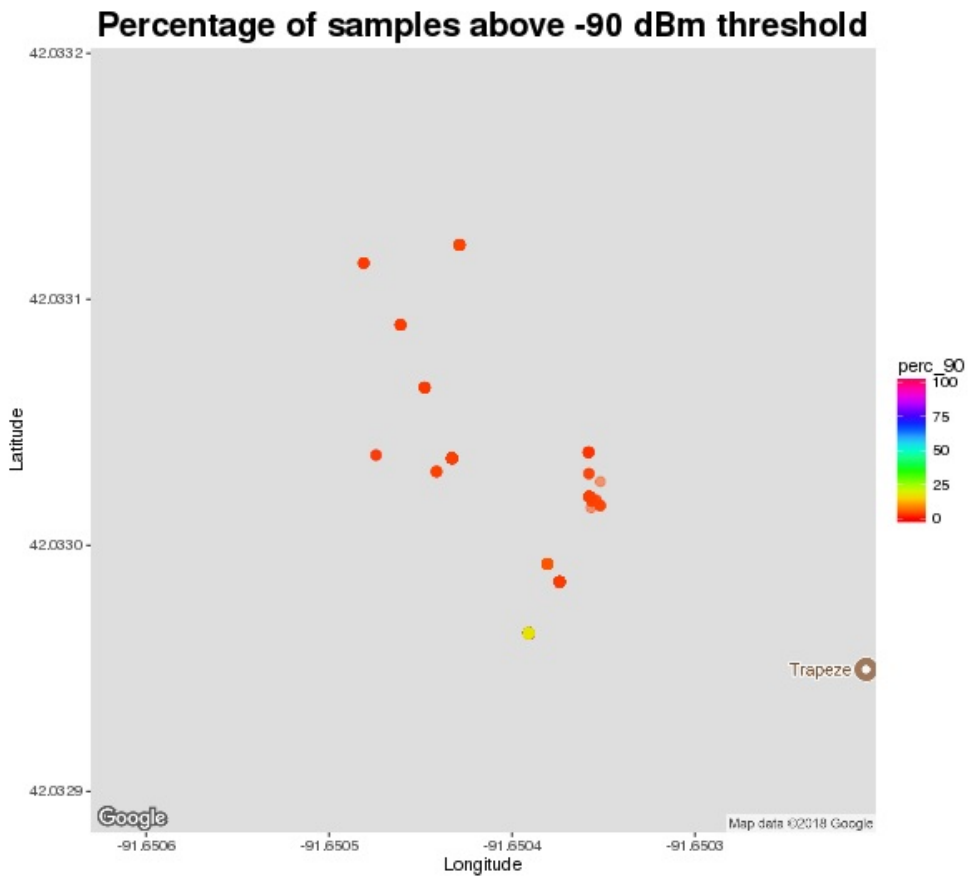
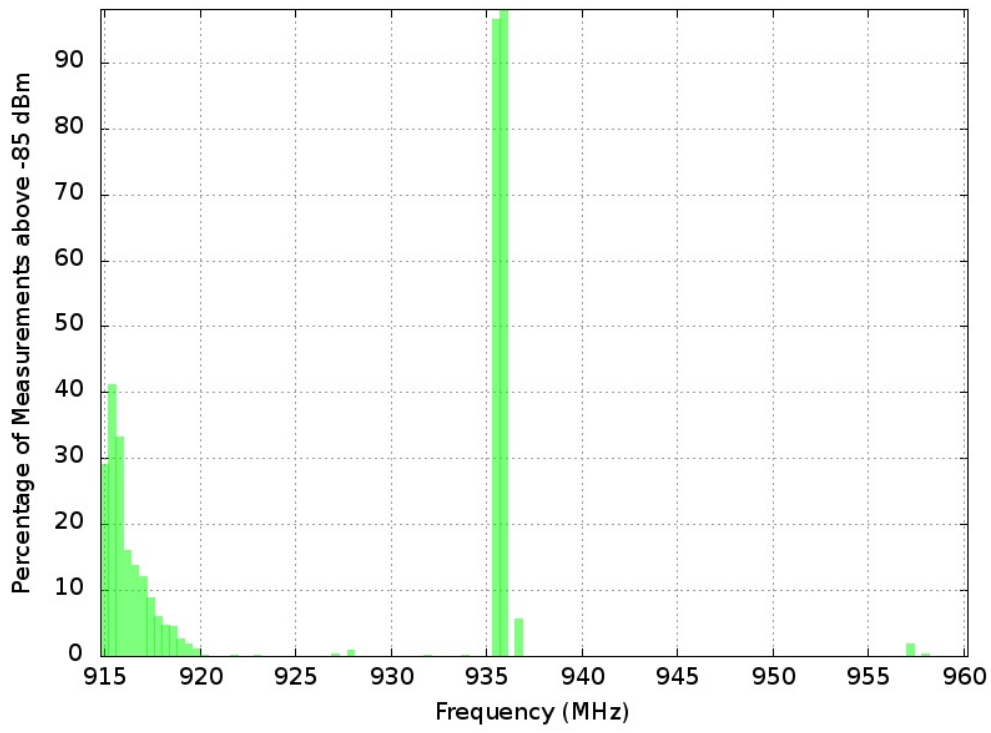


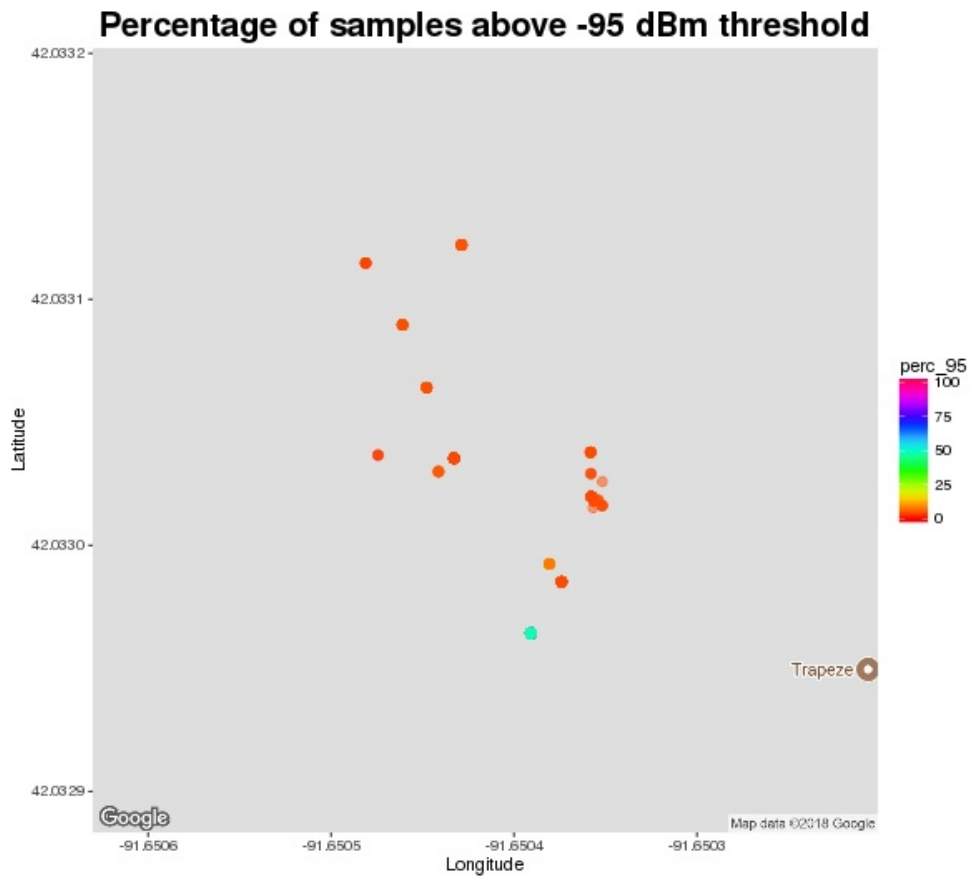
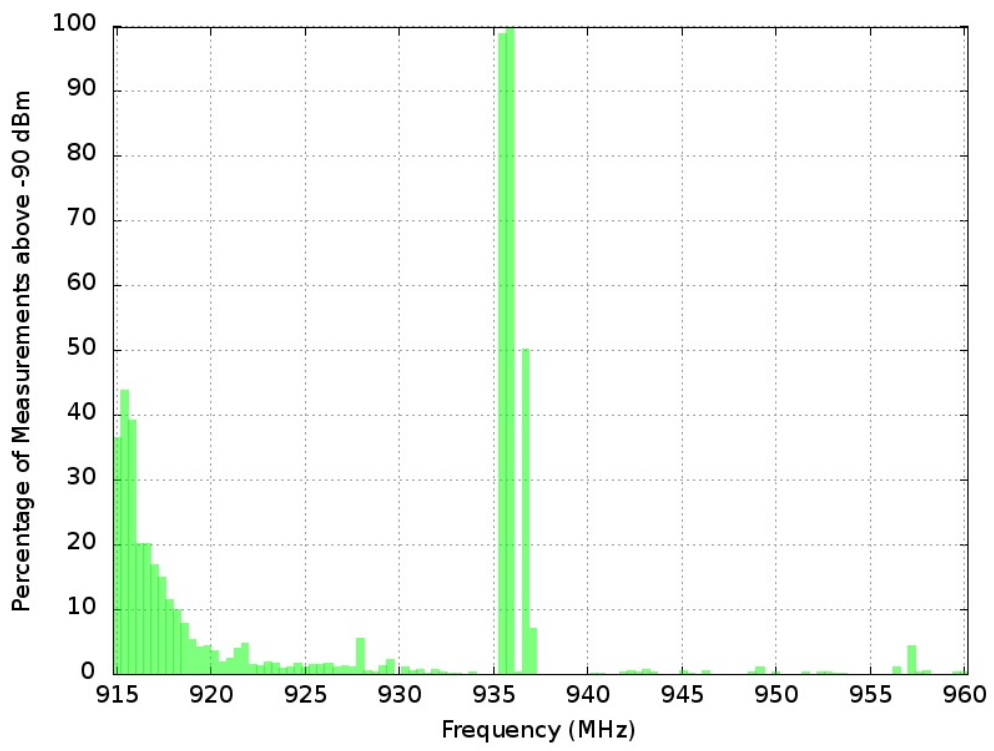
Info	Value
Campaign date:	2018-06-15
Campaign duration:	0:02:38 (hour:min:sec)
Route length:	0.1 Km
N. points:	733
Country:	no info
Country Code:	US
Place of measurement:	Louisa
Region:	no info
Population:	0

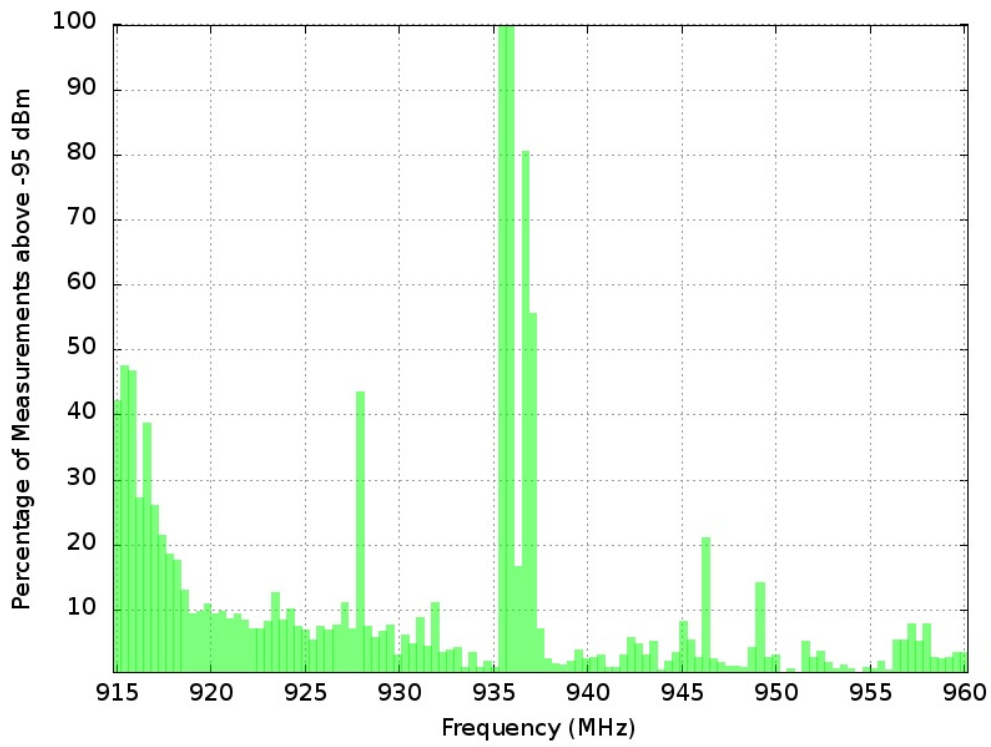
# Spectrum Maps

The first image shows power levels over time (number of measurements), the following images show different thresholds of spectrum occupancy.

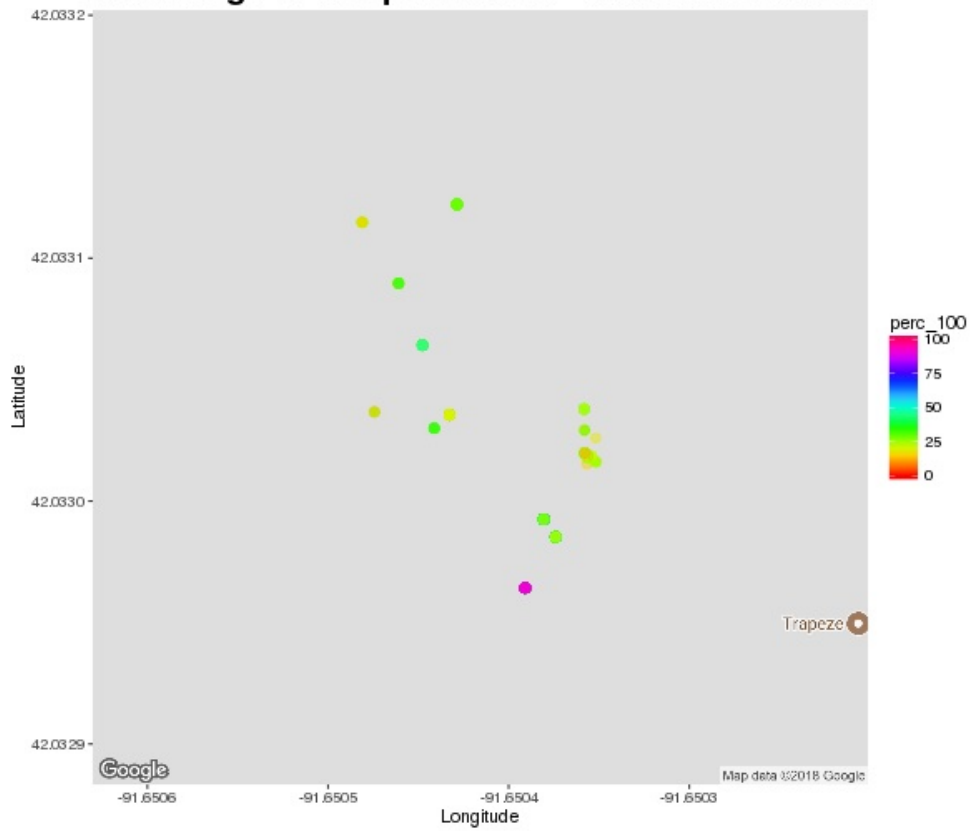


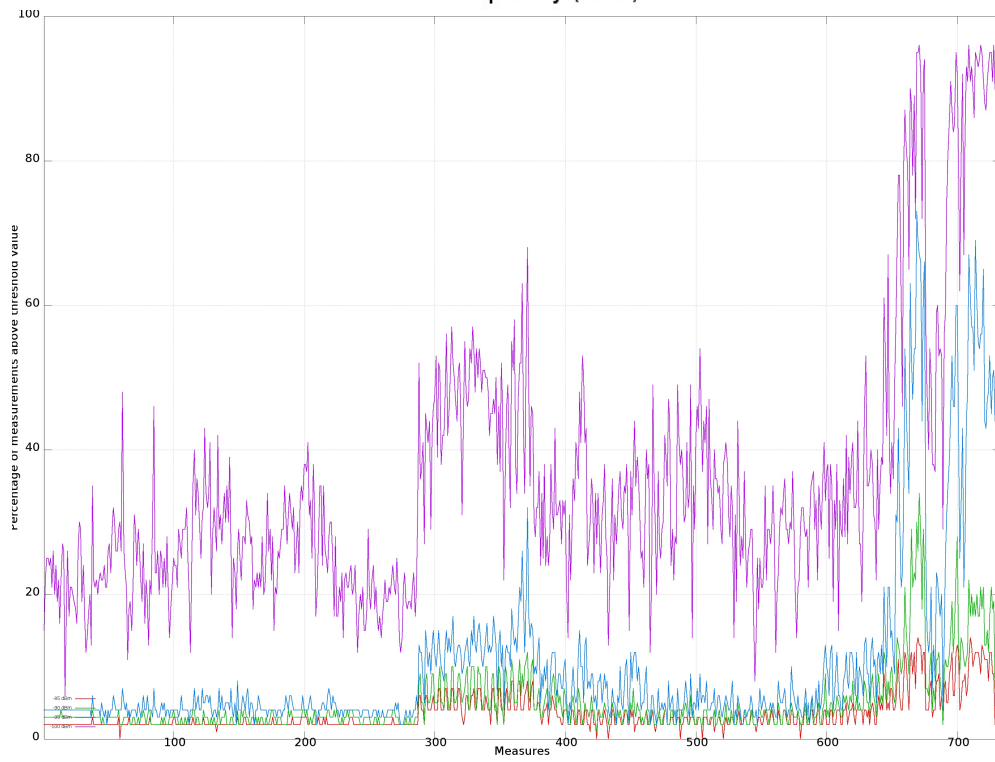
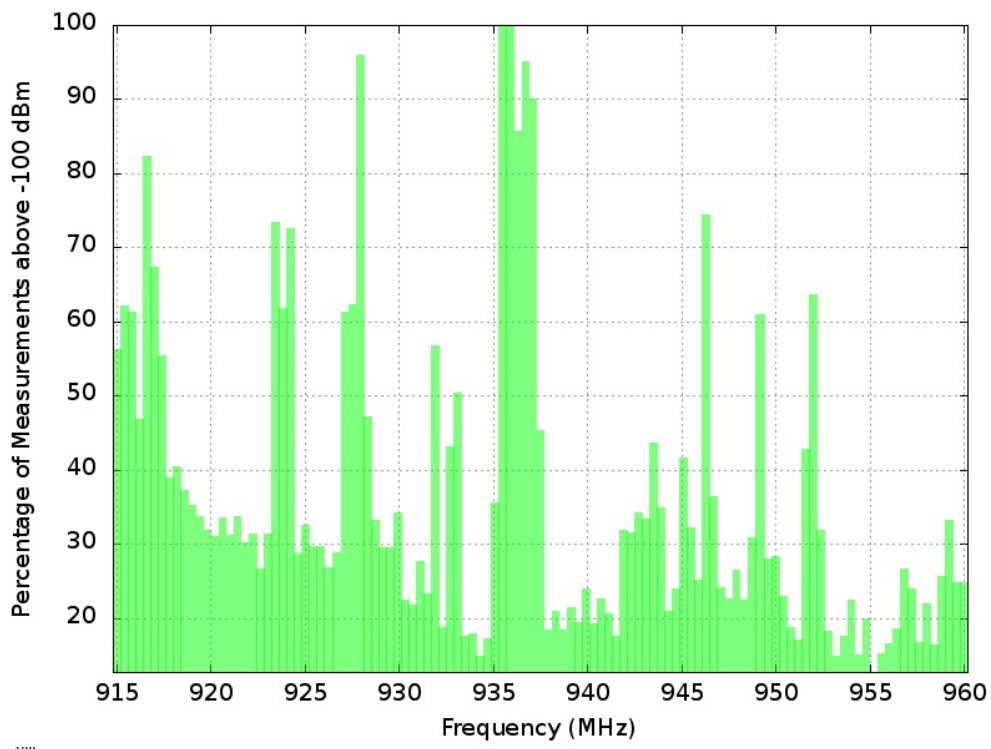






Percentage of samples above -100 dBm threshold







## Sponsor

The project was supported by the Shuttleworth Foundation (<https://www.shuttleworthfoundation.org/>)



## Copyright © 2015

Wireless T/ICT4D Lab (<http://wireless.ictp.it>)

Marco Rainone - SolviTech (<https://www.linkedin.com/in/marcorainone>)