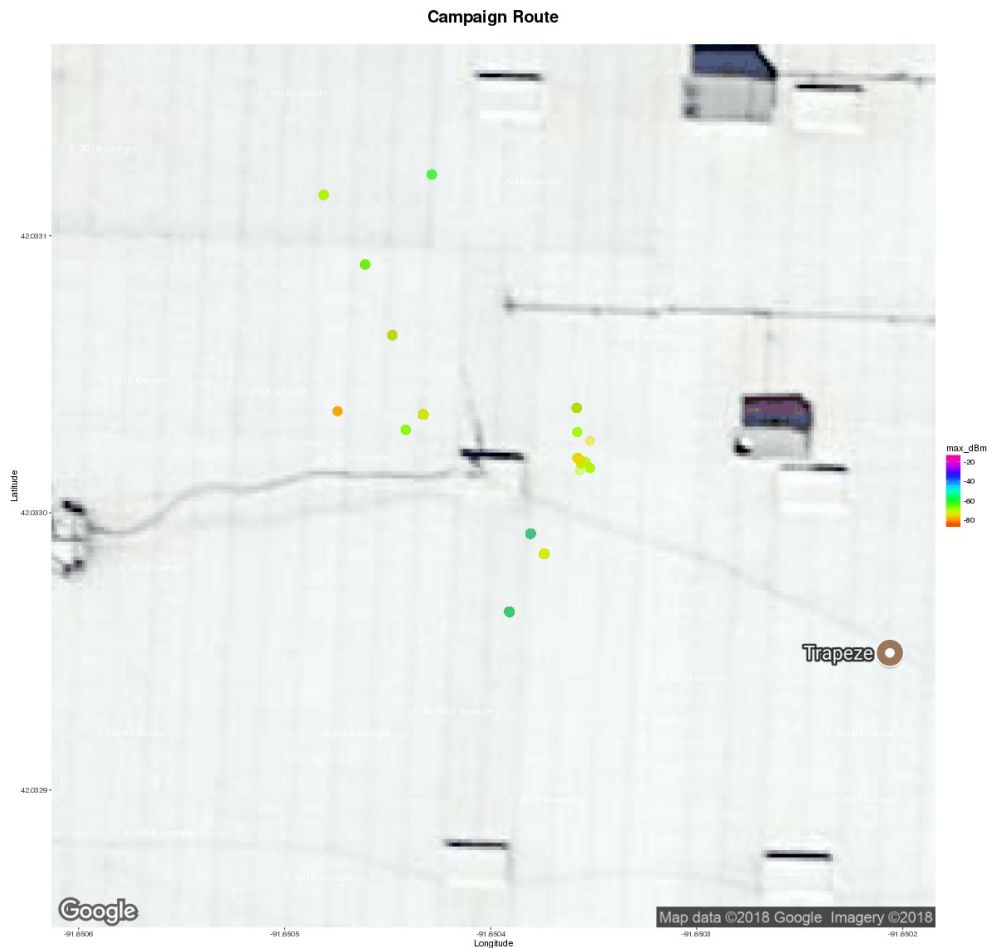


Gsm frequencies analyzer

Measurements carried out with GsmTrack (<http://wireless.ictp.it/gsm/gsmtrack/>) over the specified frequency range and antenna. Remember that most TV signals are vertically polarized. The received signal level measured in dBm is dependent on the antenna gain and orientation.



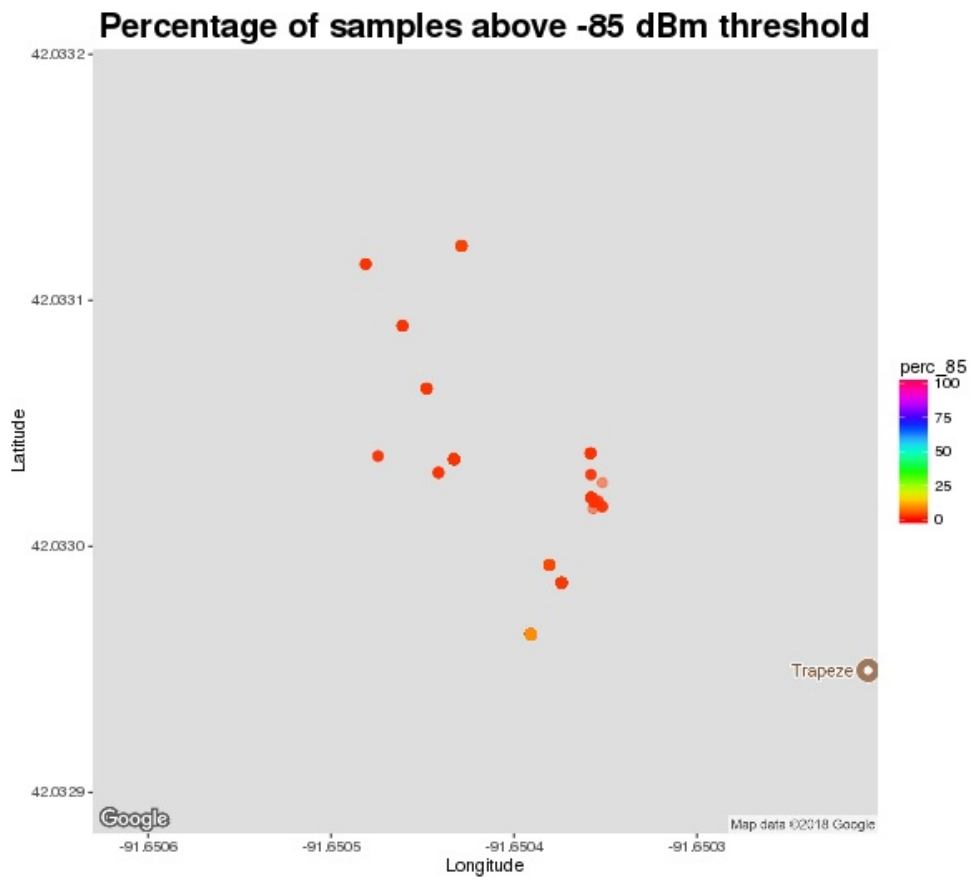
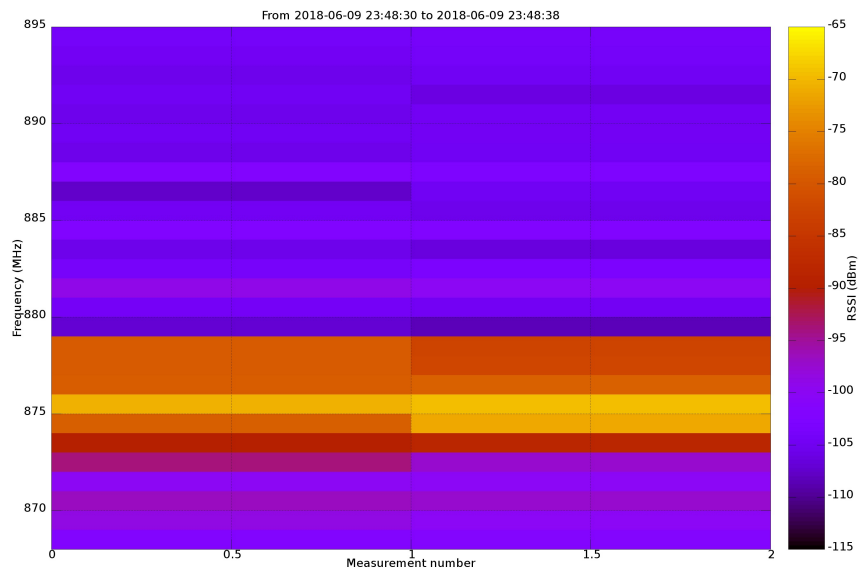
Campaign measurements info

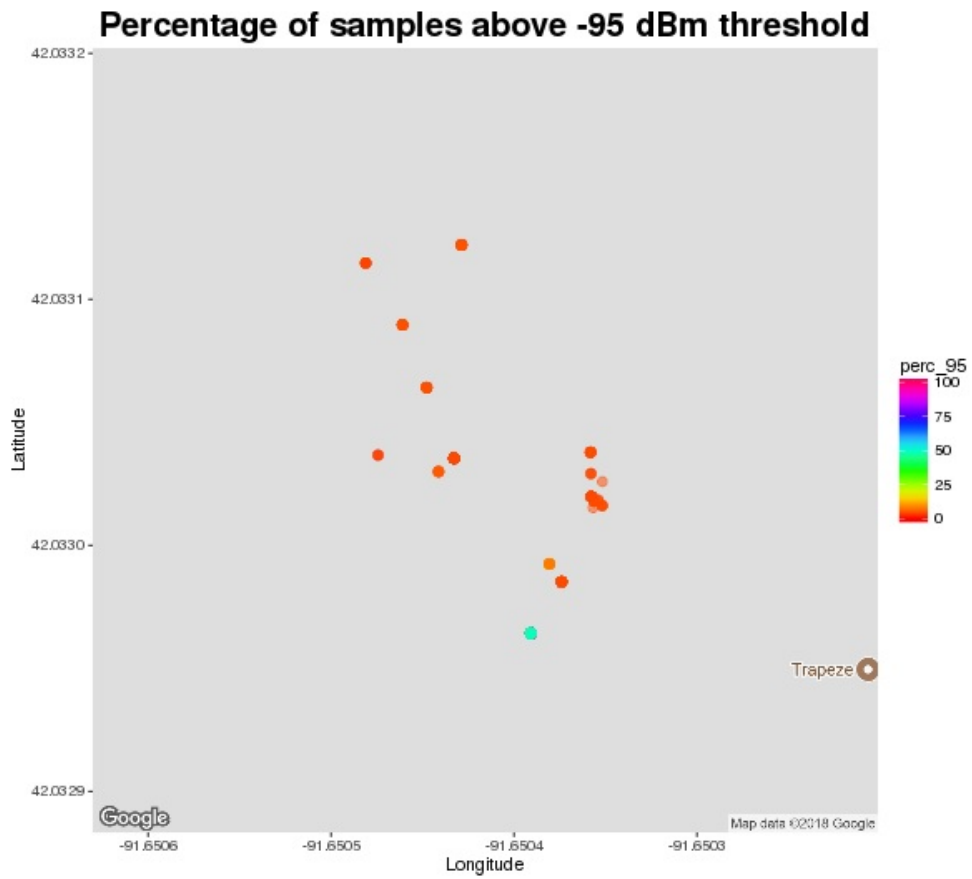
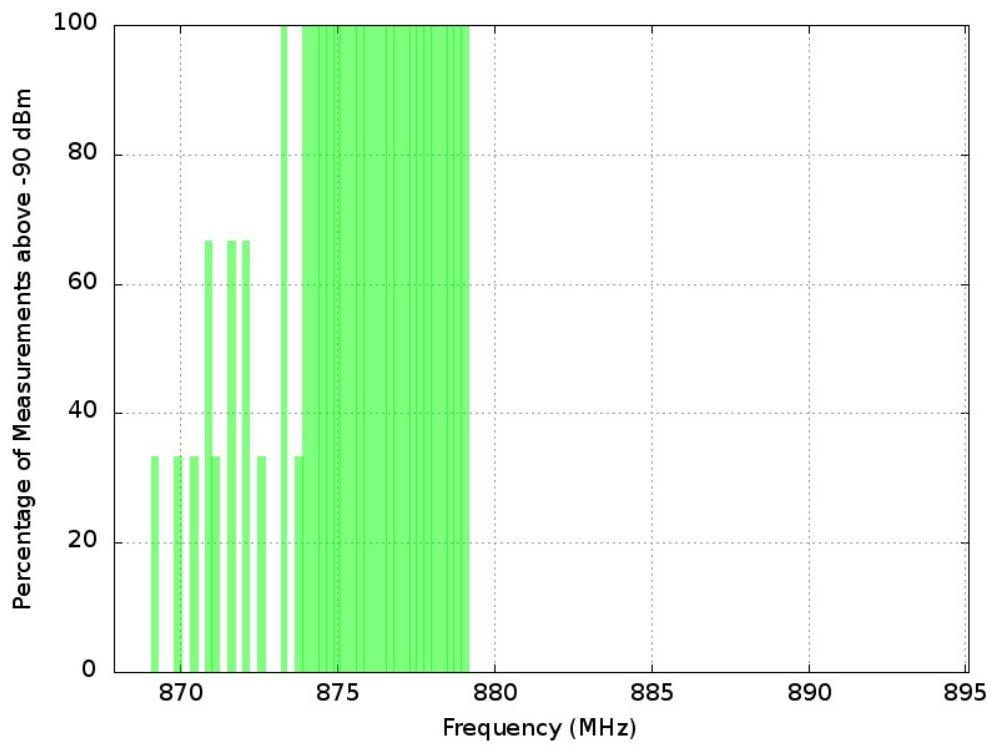


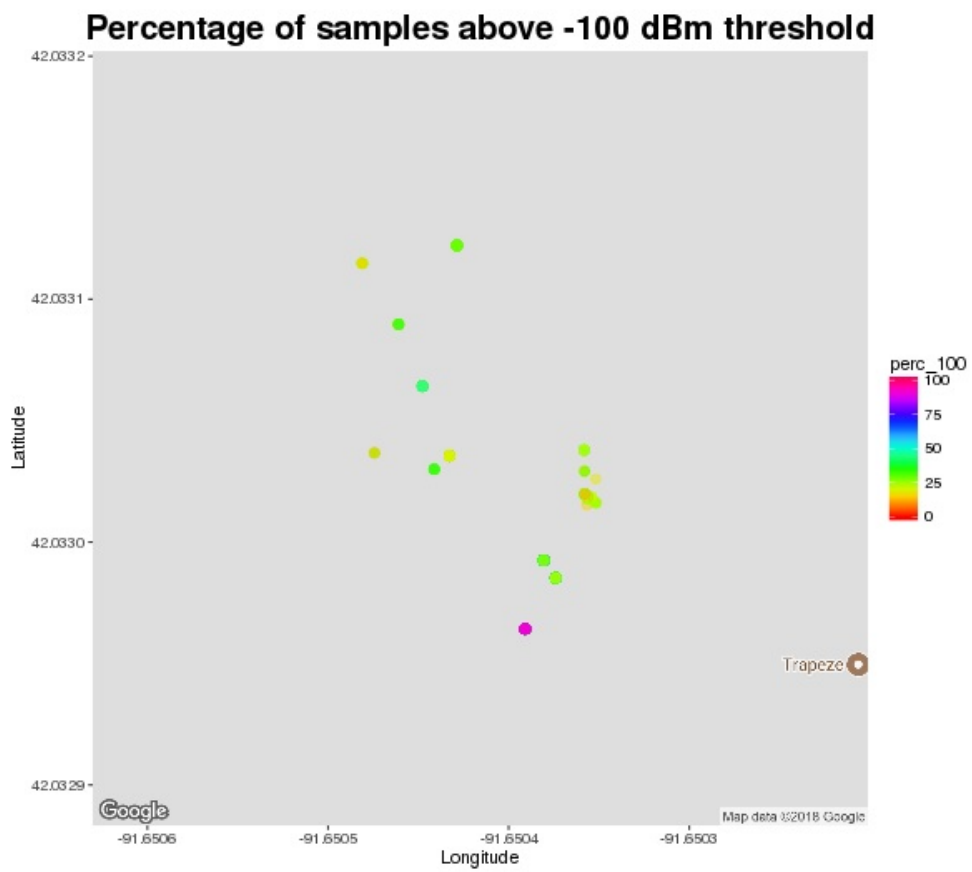
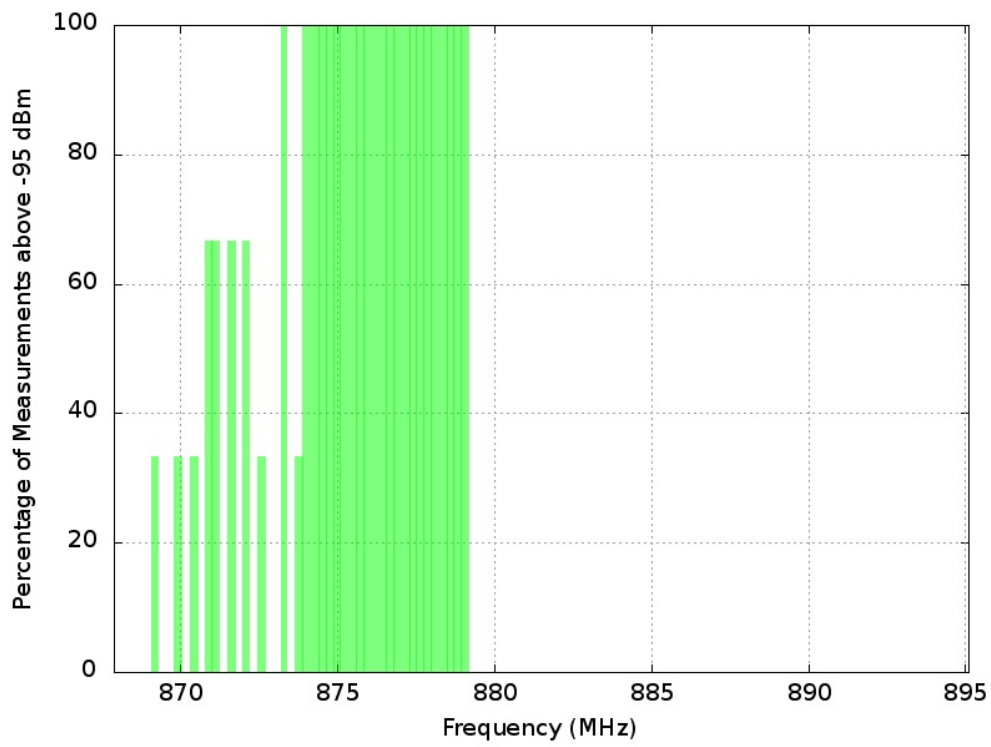
Info	Value
Campaign date:	2018-06-09
Campaign duration:	0:00:08 (hour:min:sec)
Route length:	0.0 Km
N. points:	3
Country:	no info
Country Code:	US
Place of measurement:	West Cedar Rapids
Region:	no info
Population:	0

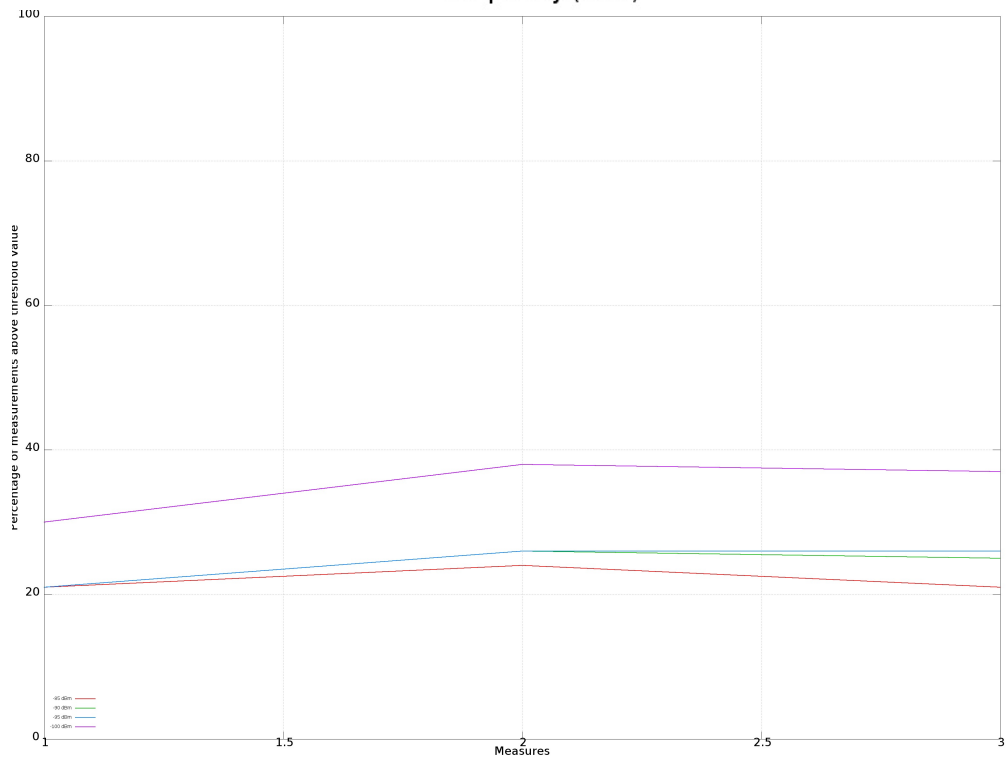
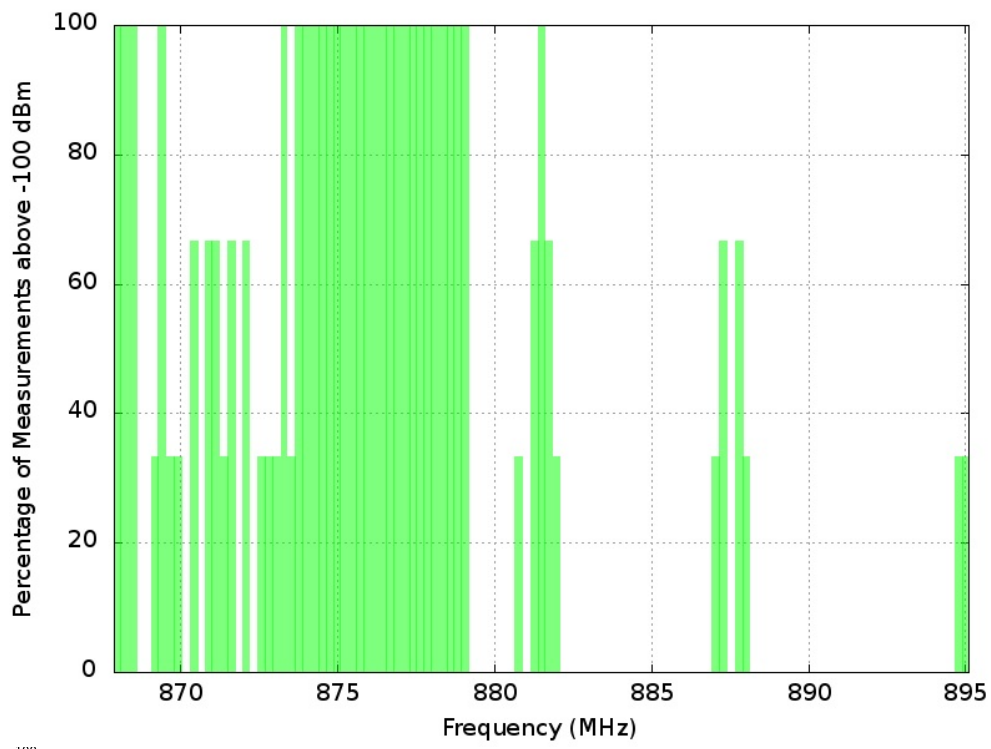
Spectrum Maps

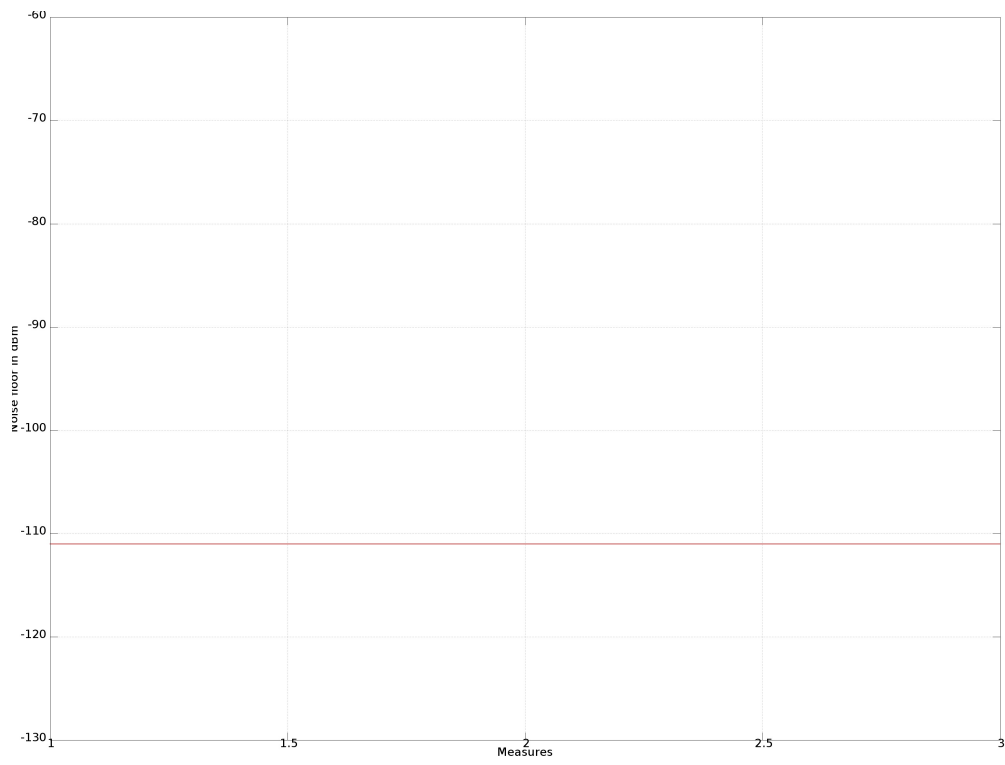
The first image shows power levels over time (number of measurements), the following images show different thresholds of spectrum occupancy.











Sponsor

The project was supported by the Shuttleworth Foundation (<https://www.shuttleworthfoundation.org/>)



Copyright © 2015

Wireless T/ICT4D Lab (<http://wireless.ictp.it>)

Marco Rainone - SolviTech (<https://www.linkedin.com/in/marcorainone>)