

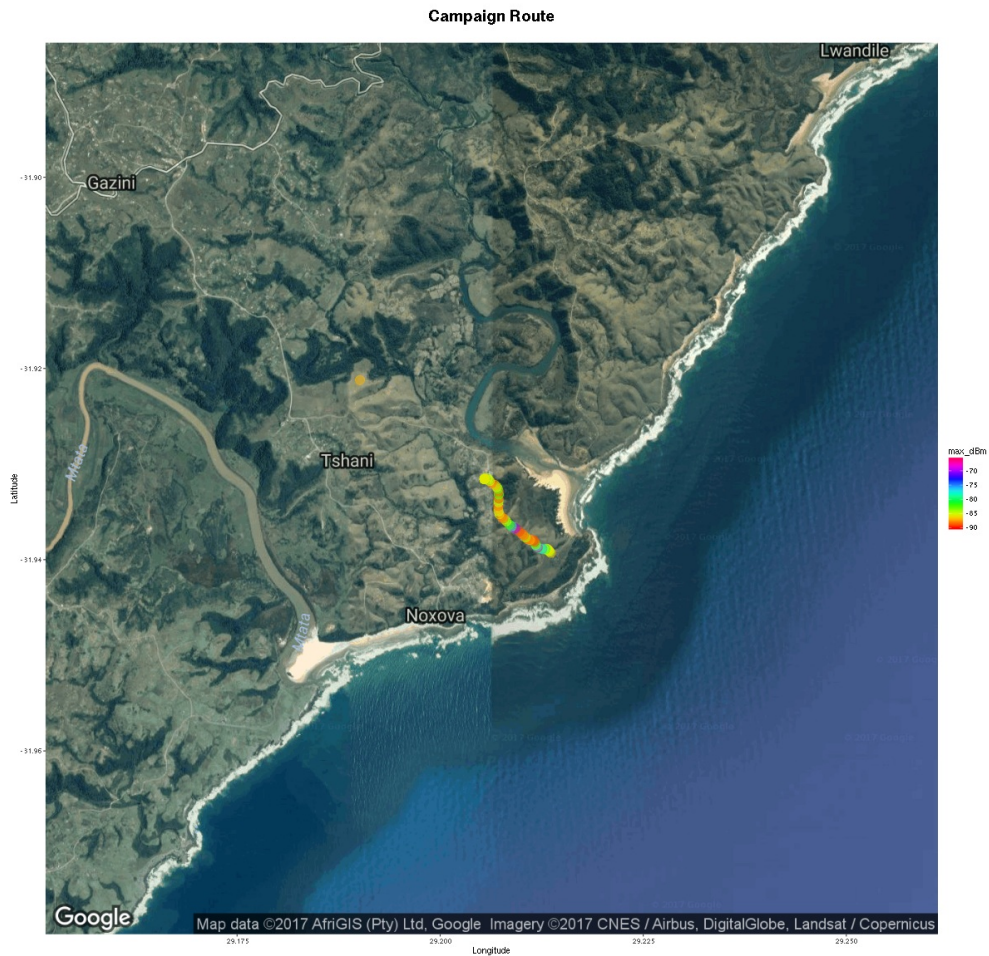
# Gsm frequencies analyzer

Measurements carried out with GsmTrack (<http://wireless.ictp.it/gsm/gsmtrack/>) over the specified frequency range and antenna. Remember that most TV signals are vertically polarized.

The received signal level measured in dBm is dependent on the antenna gain and orientation.



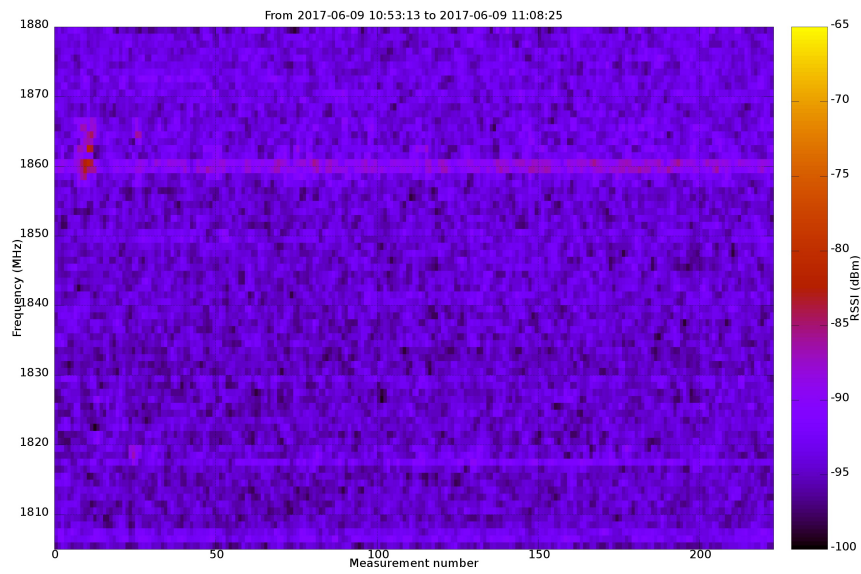
## Campaign measurements info



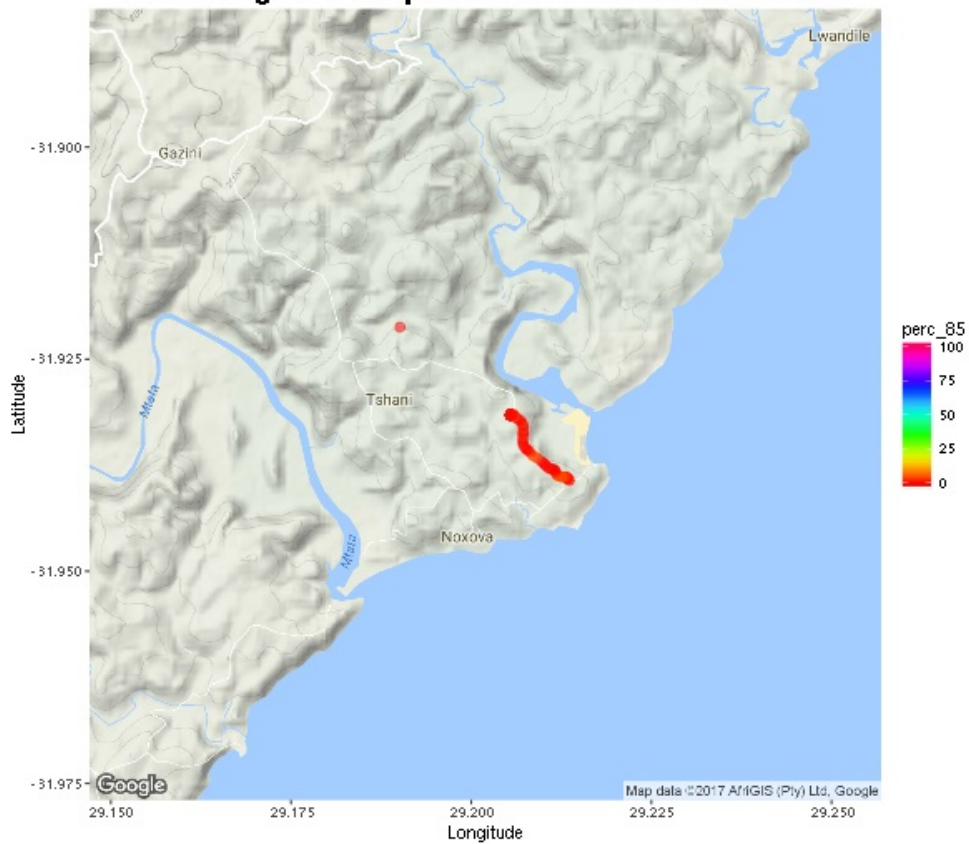
| Info                  | Value                  |
|-----------------------|------------------------|
| Campaign date:        | 2017-06-09             |
| Campaign duration:    | 0:15:12 (hour:min:sec) |
| Route length:         | 4.3 Km                 |
| N. points:            | 224                    |
| Country:              | South Africa           |
| Country Code:         | ZA                     |
| Place of measurement: | Tshani                 |
| Region:               | Eastern Cape           |
| Population:           | no info                |

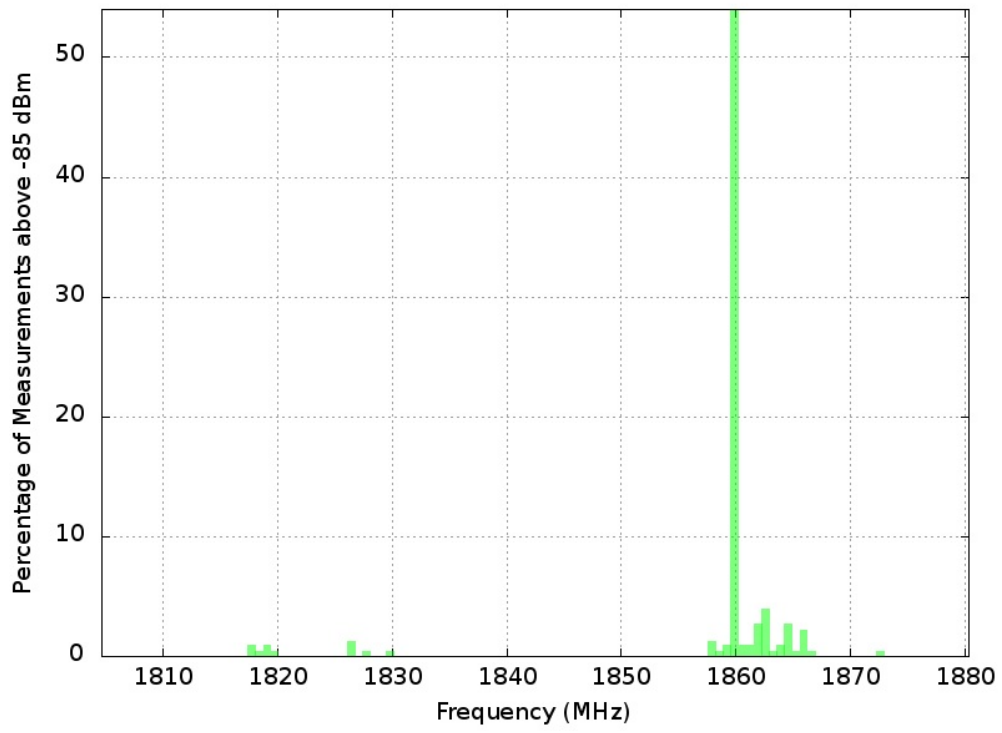
# Spectrum Maps

The first image shows power levels over time (number of measurements), the following images show different thresholds of spectrum occupancy.

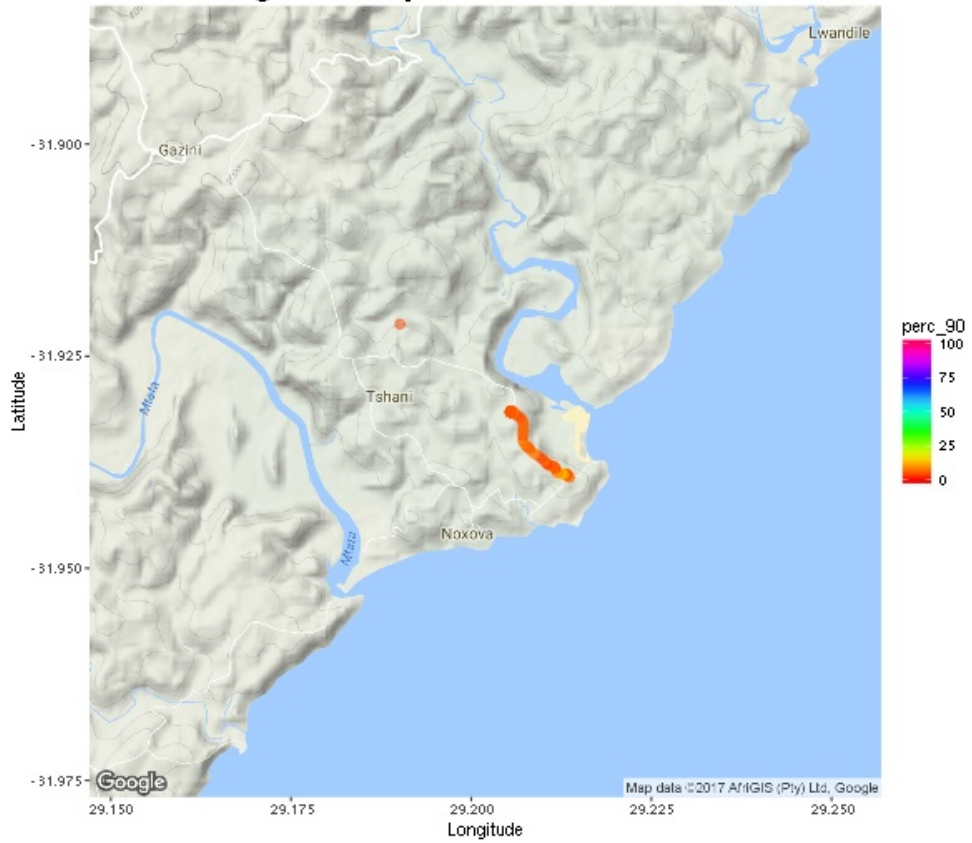


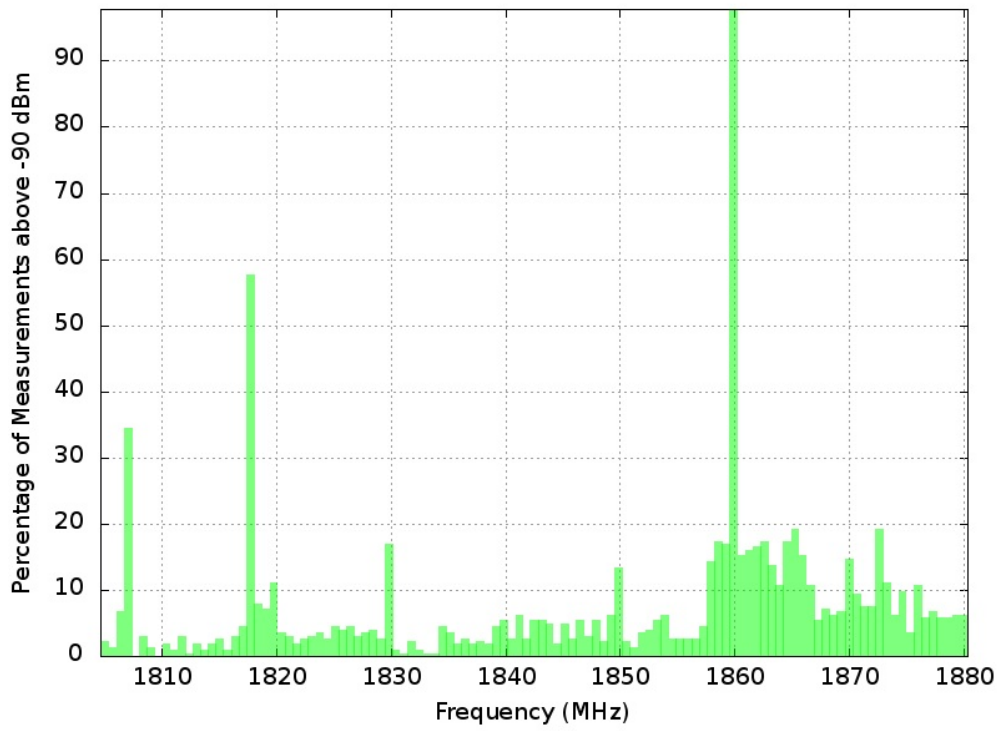
## Percentage of samples above -85 dBm threshold



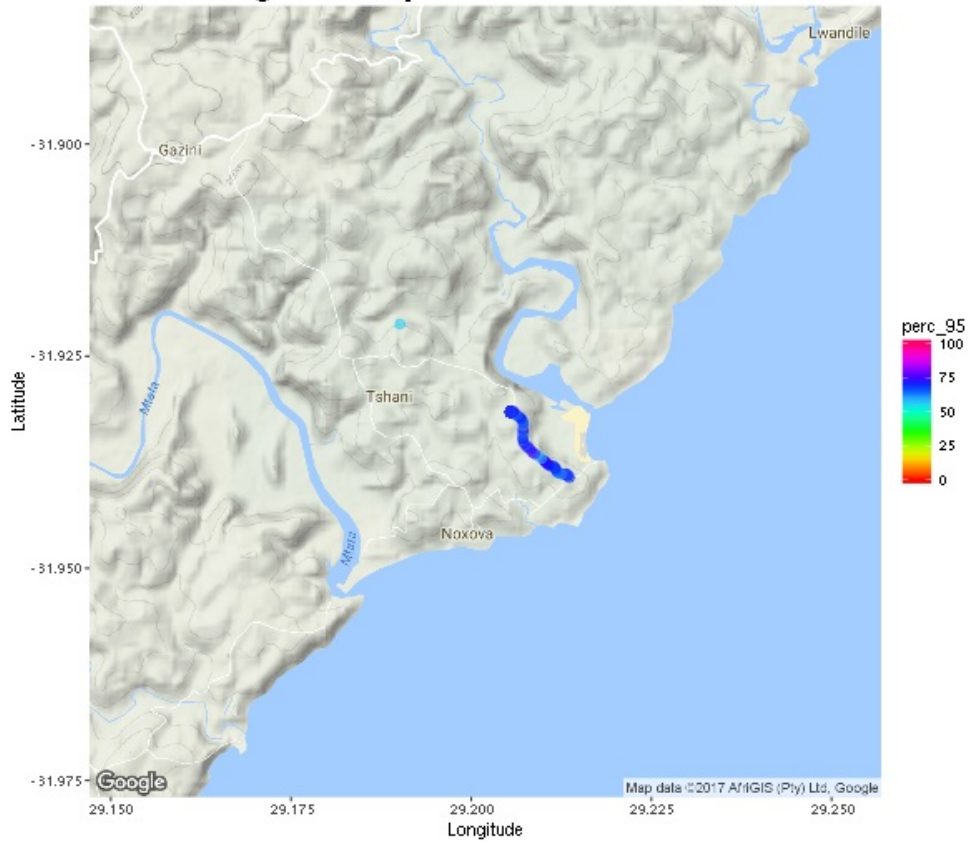


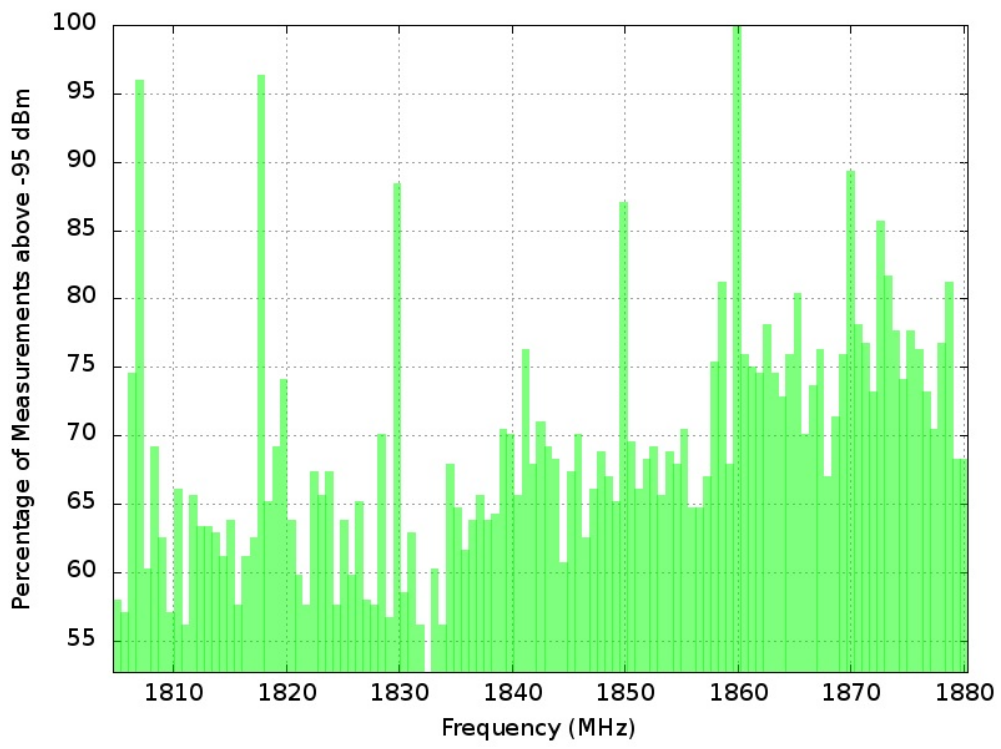
### Percentage of samples above -90 dBm threshold



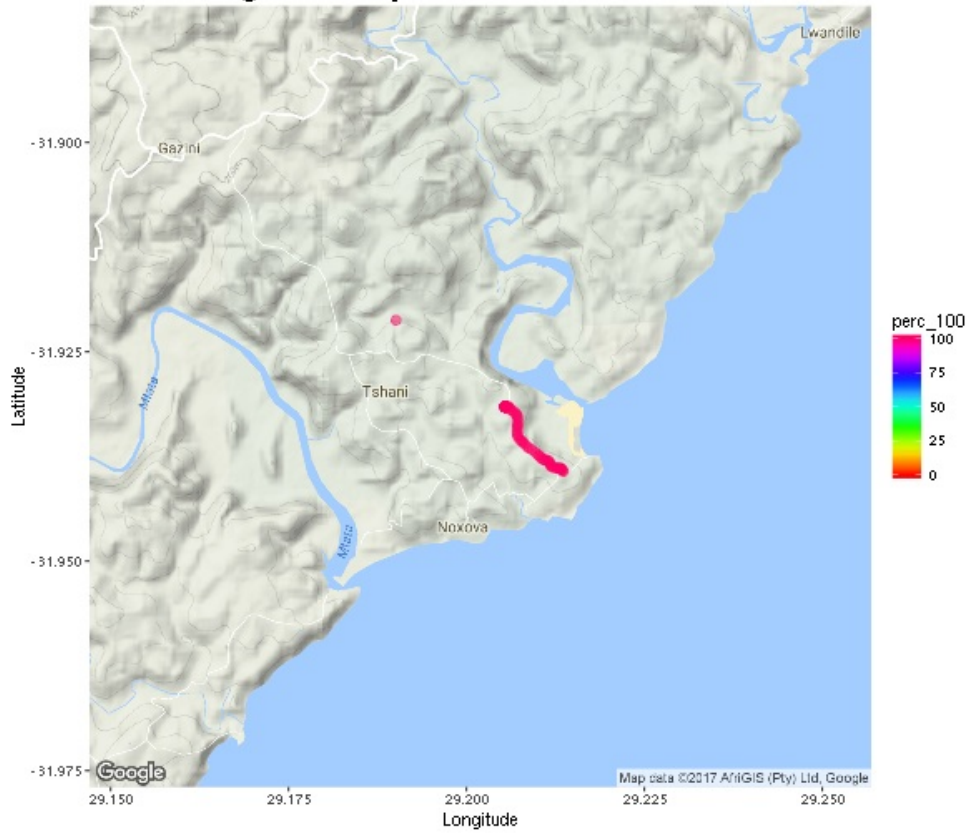


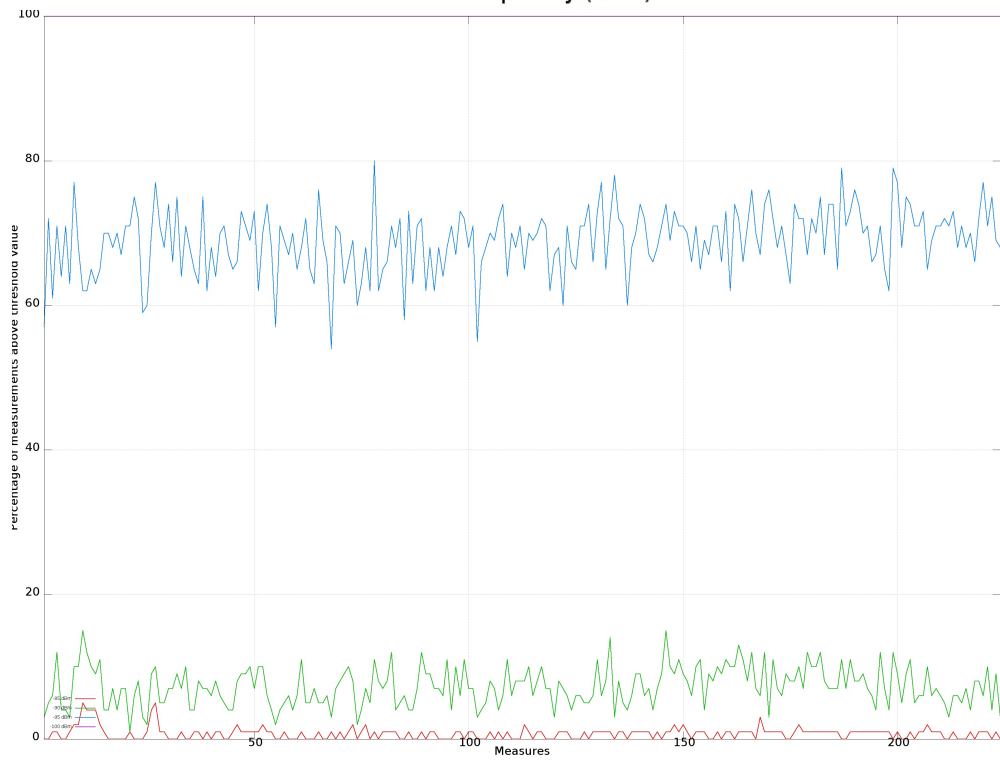
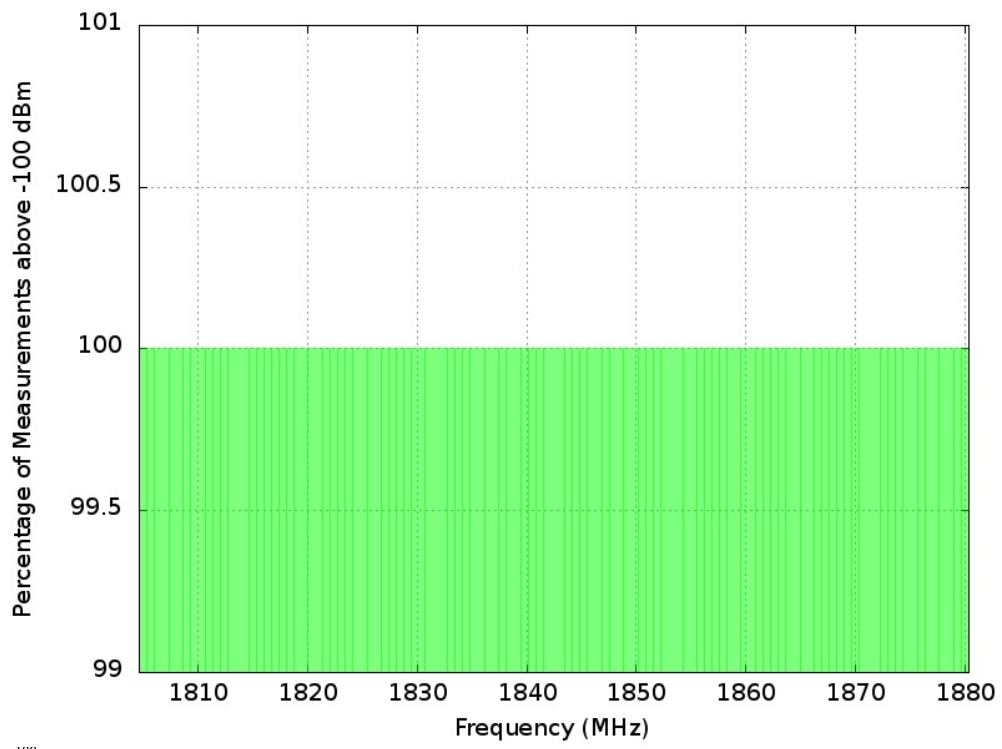
**Percentage of samples above -95 dBm threshold**

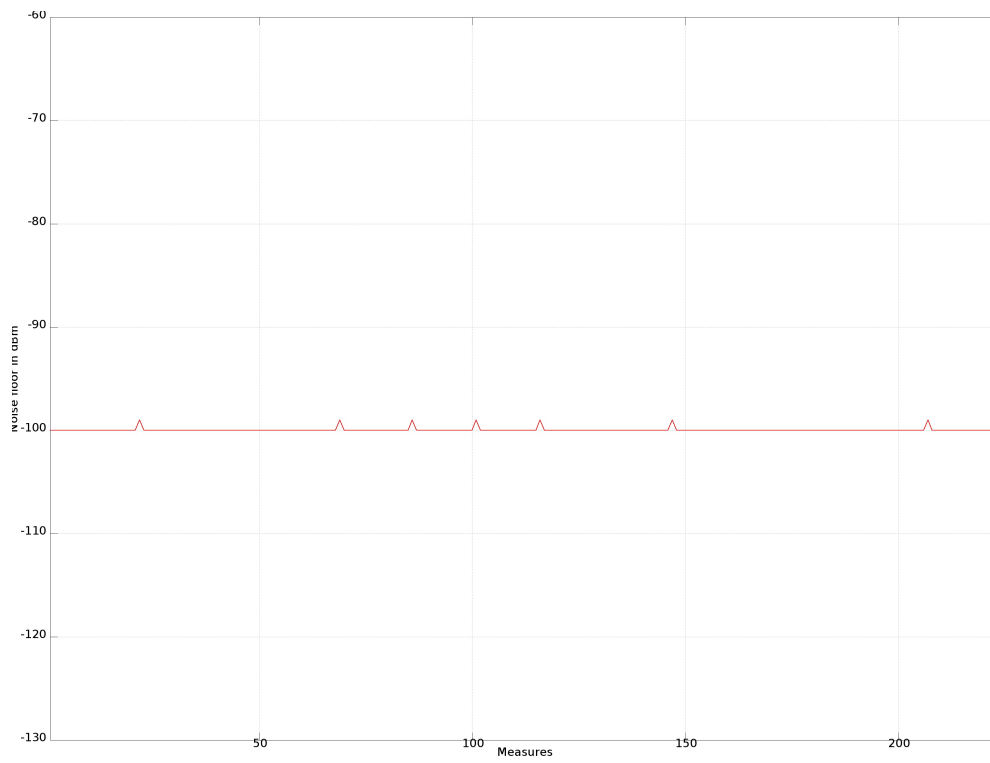




**Percentage of samples above -100 dBm threshold**







## Sponsor

The project was supported by the Shuttleworth Foundation (<https://www.shuttleworthfoundation.org/>)



## Copyright © 2015

Wireless T/ICT4D Lab (<http://wireless.ictp.it>)

Marco Rainone - SolvITech (<https://www.linkedin.com/in/marcorainone>)