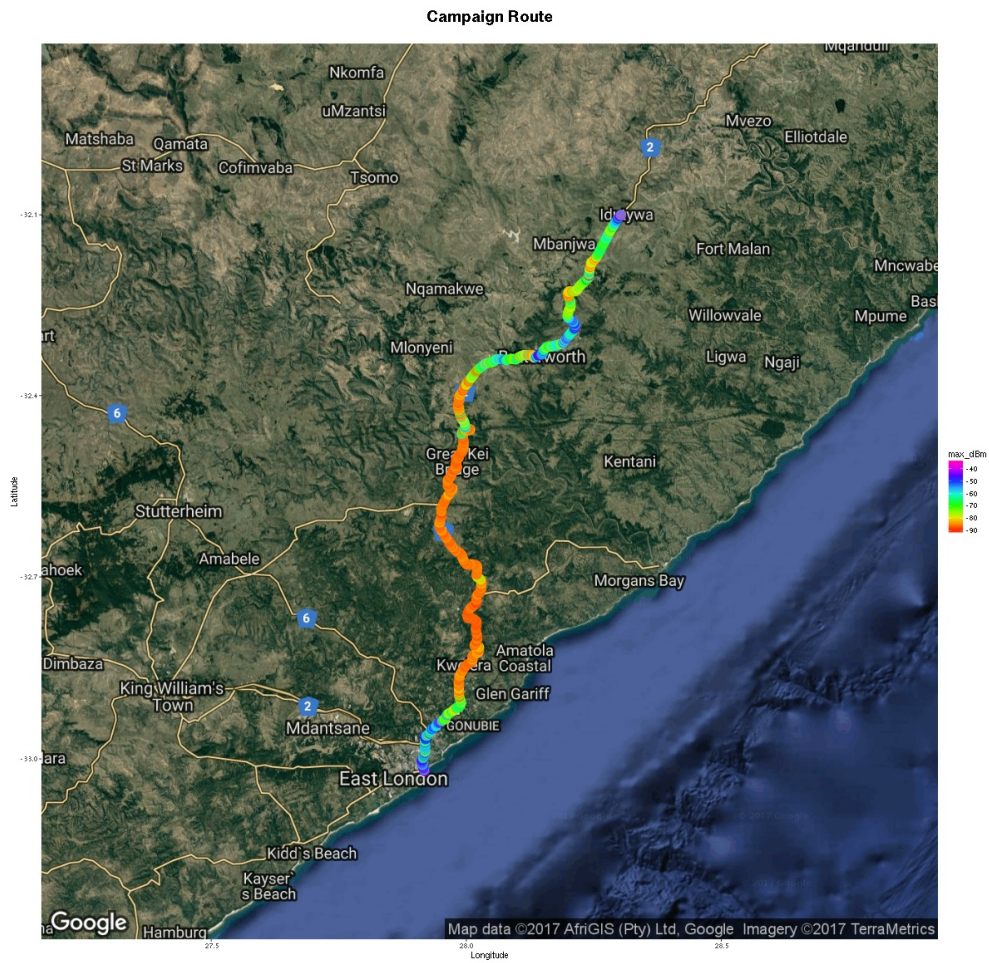


# Gsm frequencies analyzer

Measurements carried out with GsmTrack (<http://wireless.ictp.it/gsm/gsmtrack/>) over the specified frequency range and antenna. Remember that most TV signals are vertically polarized. The received signal level measured in dBm is dependent on the antenna gain and orientation.



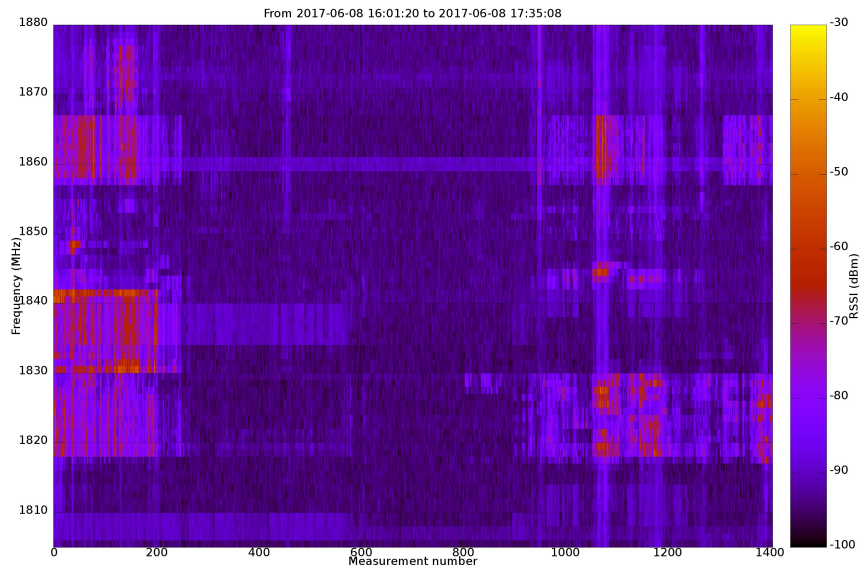
## Campaign measurements info



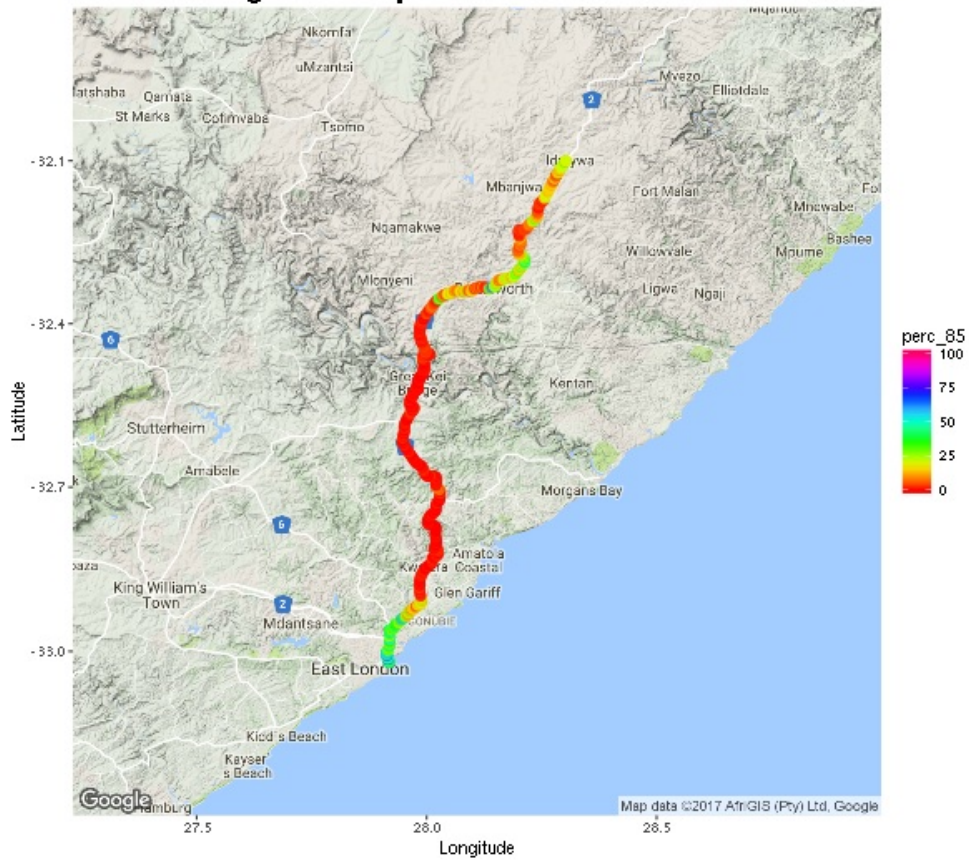
Info	Value
Campaign date:	2017-06-08
Campaign duration:	1:33:48 (hour:min:sec)
Route length:	139.9 Km
N. points:	1408
Country:	South Africa
Country Code:	ZA
Place of measurement:	Quigney
Region:	Eastern Cape
Population:	no info

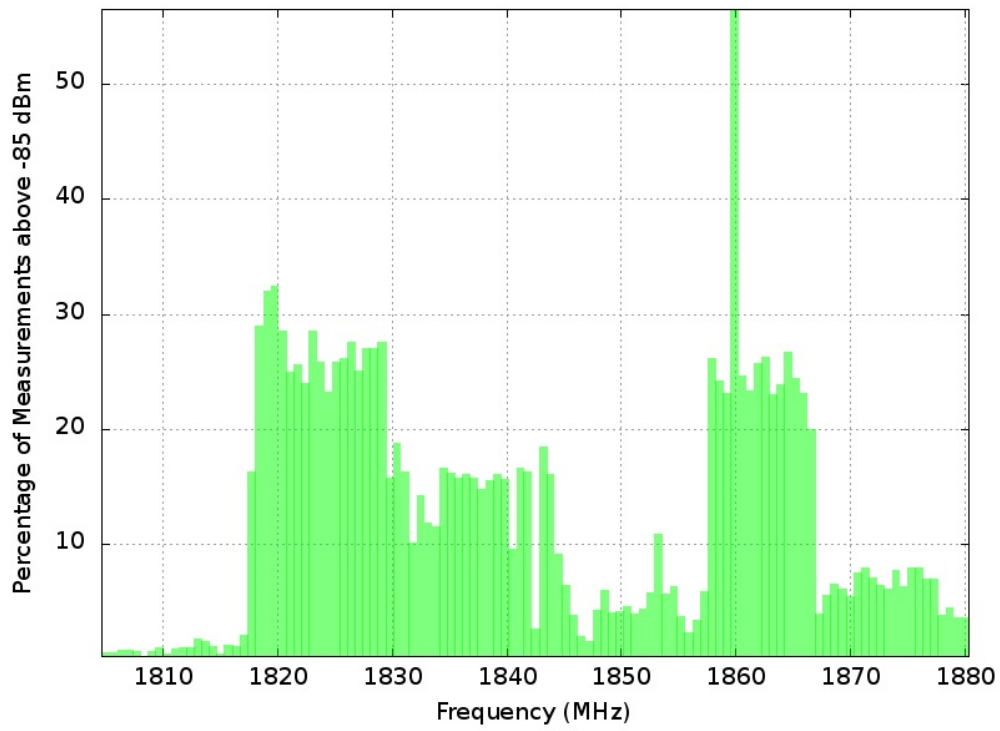
# Spectrum Maps

The first image shows power levels over time (number of measurements), the following images show different thresholds of spectrum occupancy.

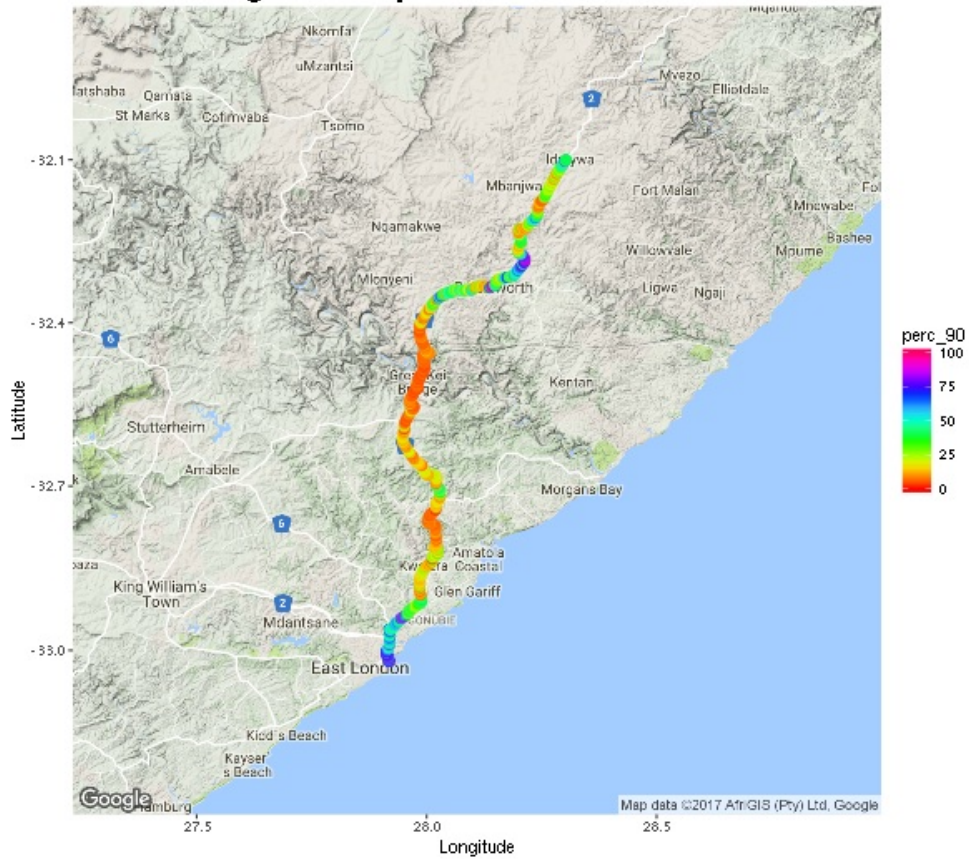


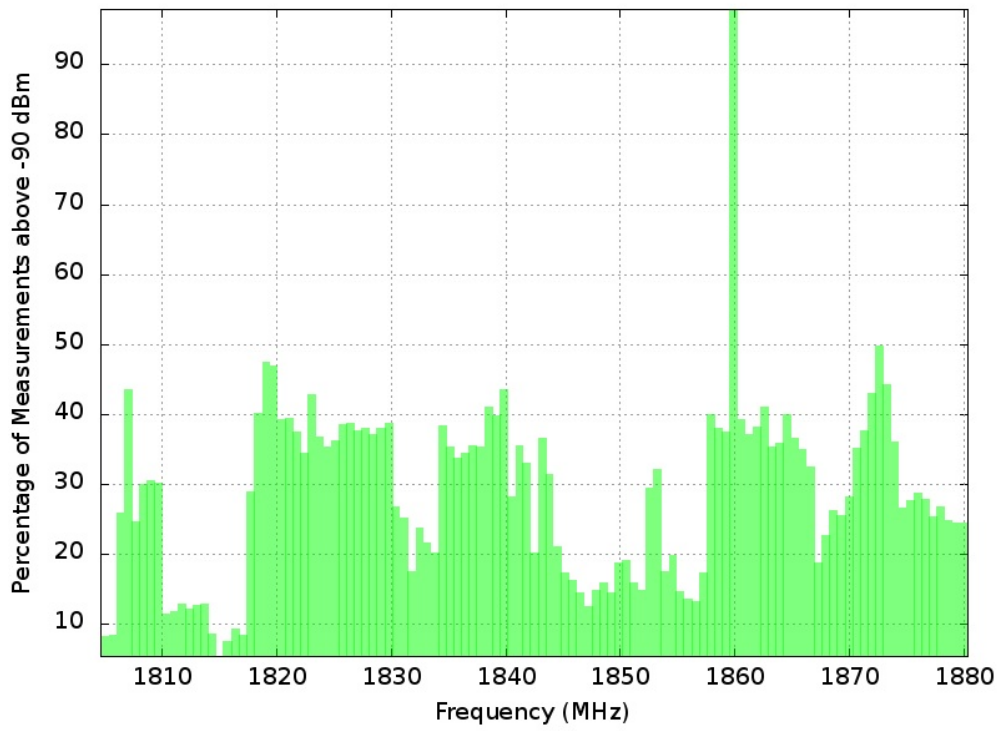
## Percentage of samples above -85 dBm threshold



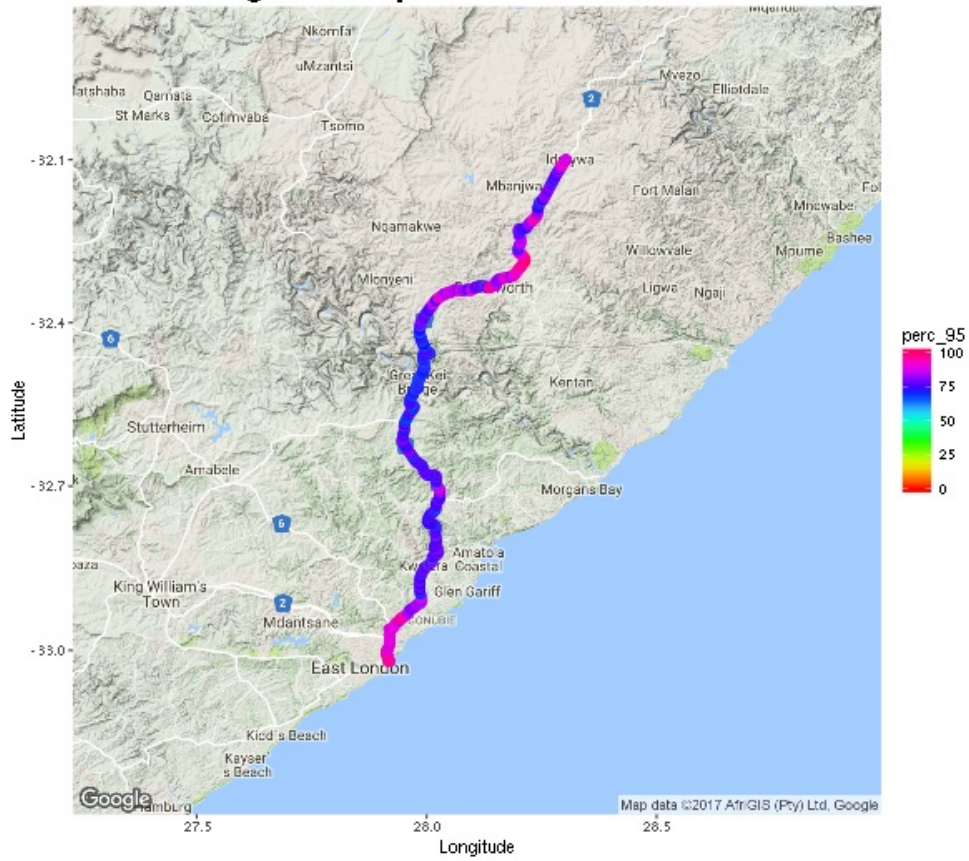


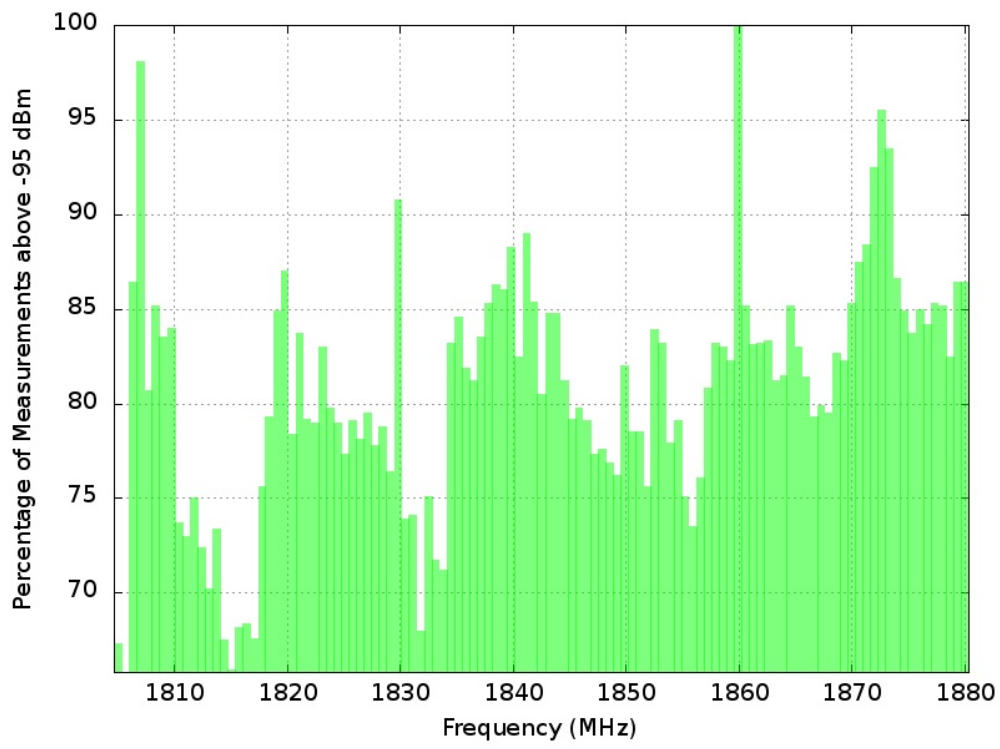
### Percentage of samples above -90 dBm threshold



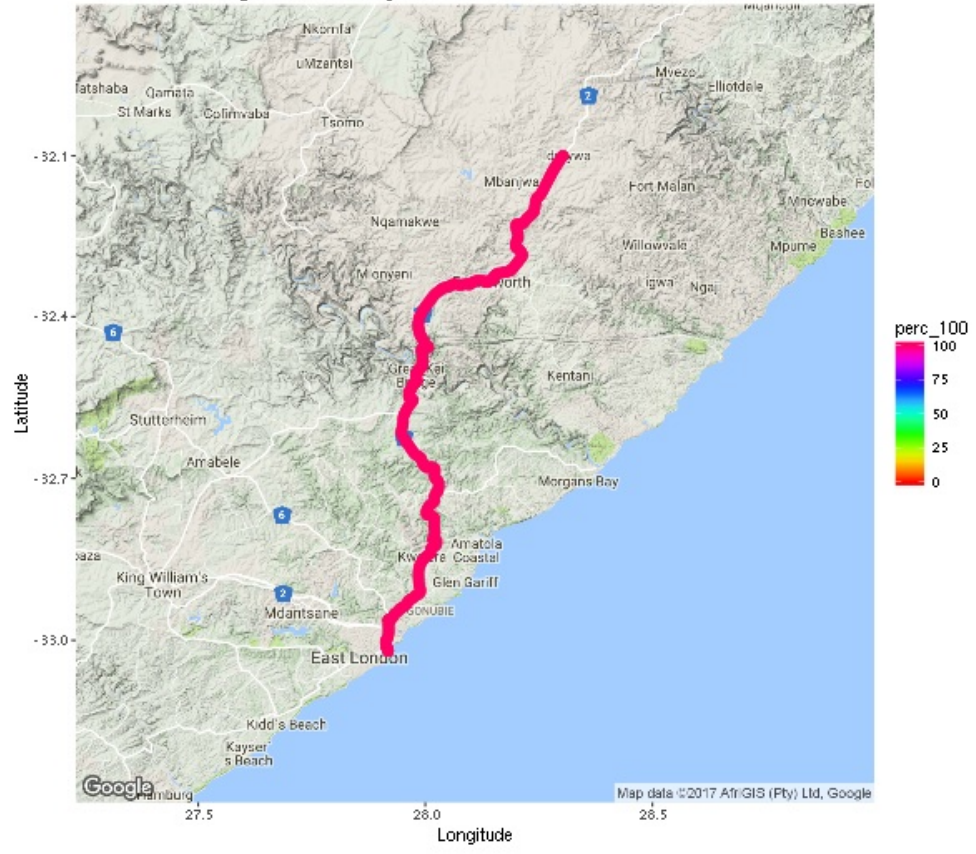


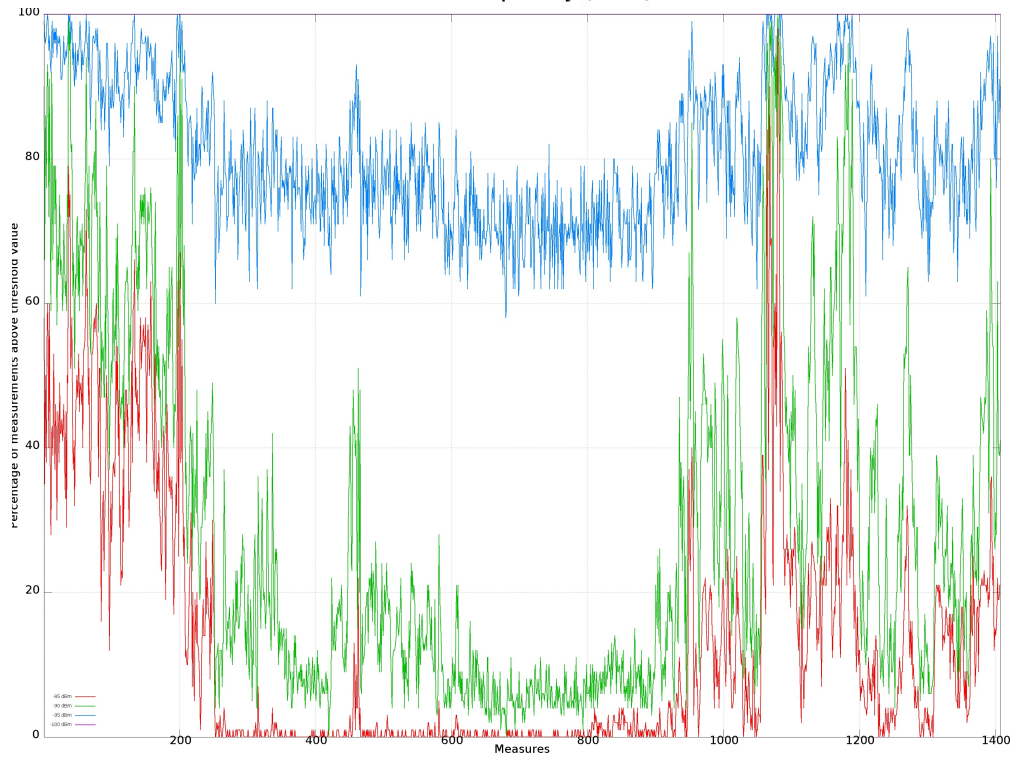
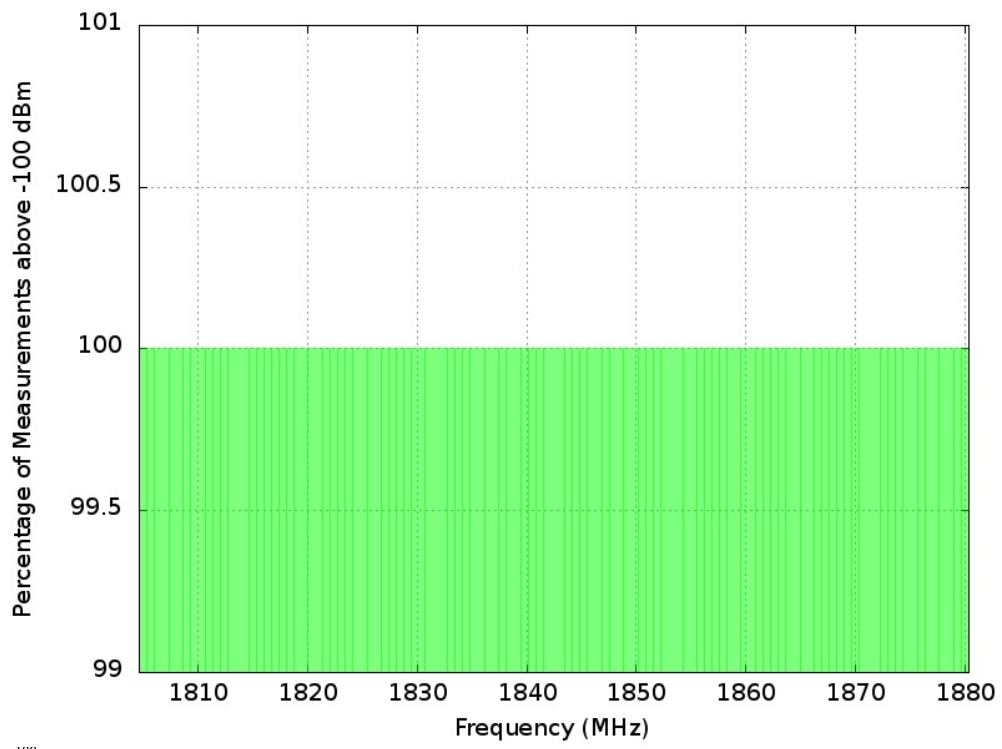
### Percentage of samples above -95 dBm threshold

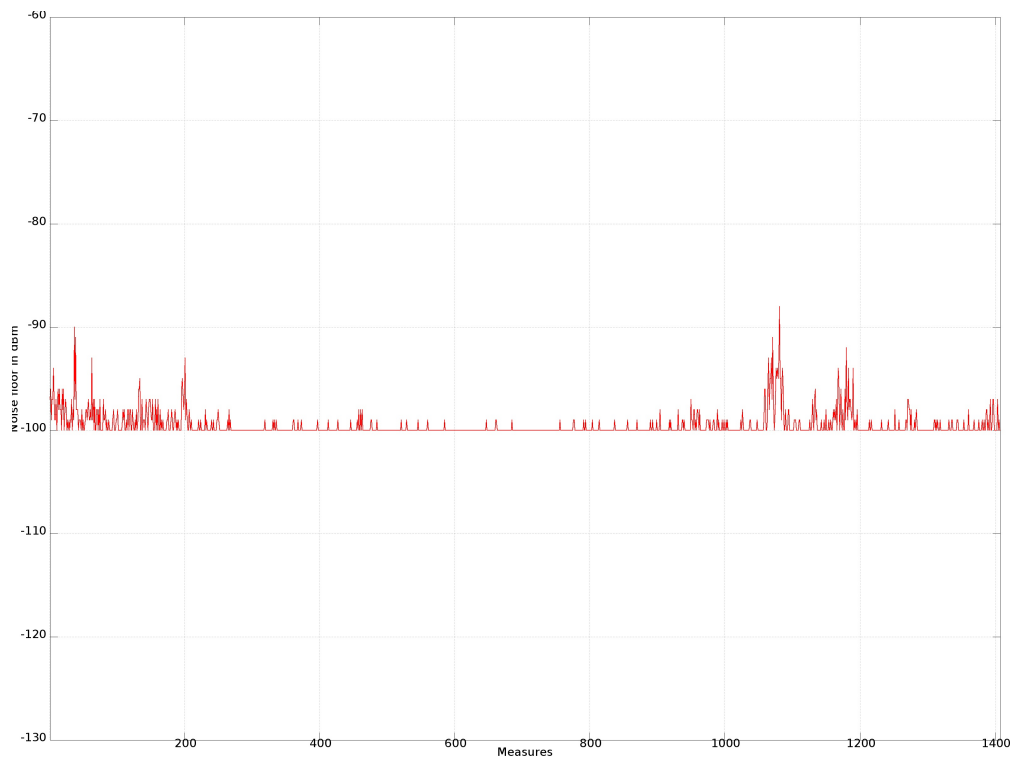




### Percentage of samples above -100 dBm threshold







## Sponsor

The project was supported by the Shuttleworth Foundation (<https://www.shuttleworthfoundation.org/>)



## Copyright © 2015

Wireless T/ICT4D Lab (<http://wireless.ictp.it>)

Marco Rainone - SolvITech (<https://www.linkedin.com/in/marcorainone>)