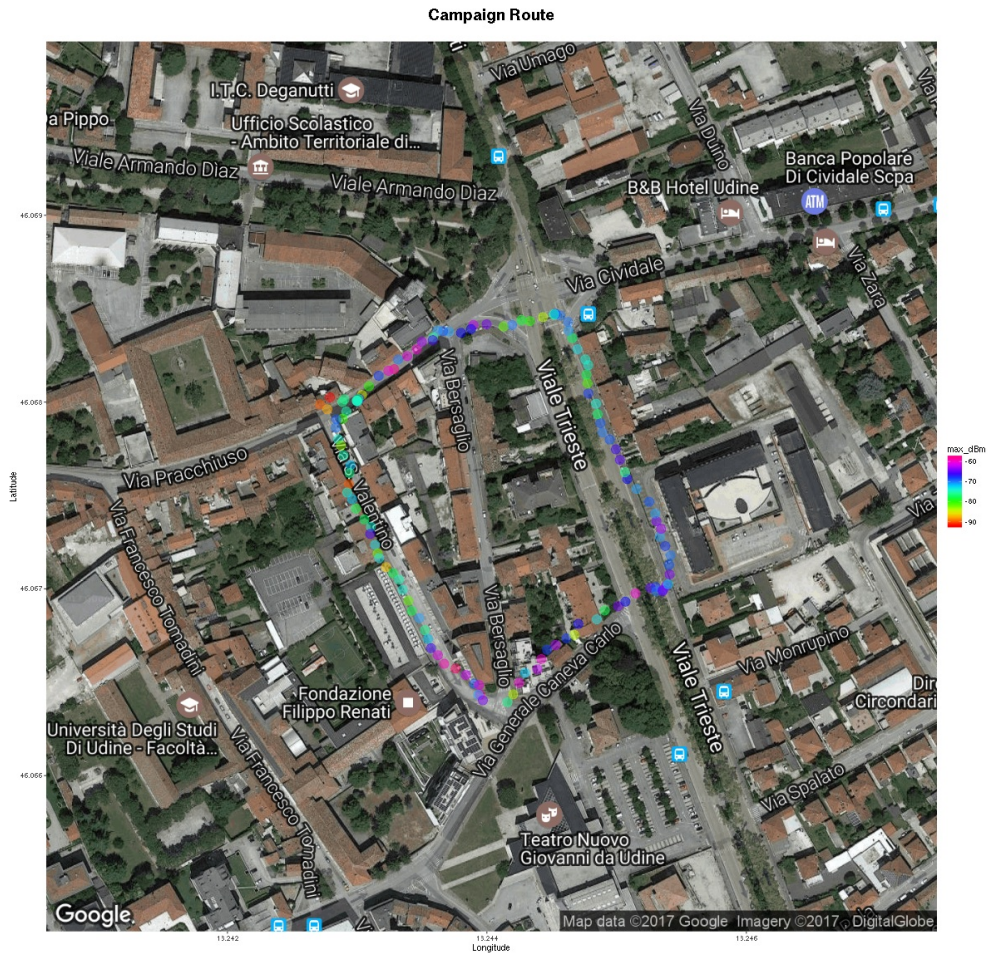


# Gsm frequencies analyzer

Measurements carried out with GsmTrack (<http://wireless.ictp.it/gsm/gsmtrack/>) over the specified frequency range and antenna. Remember that most TV signals are vertically polarized. The received signal level measured in dBm is dependent on the antenna gain and orientation.



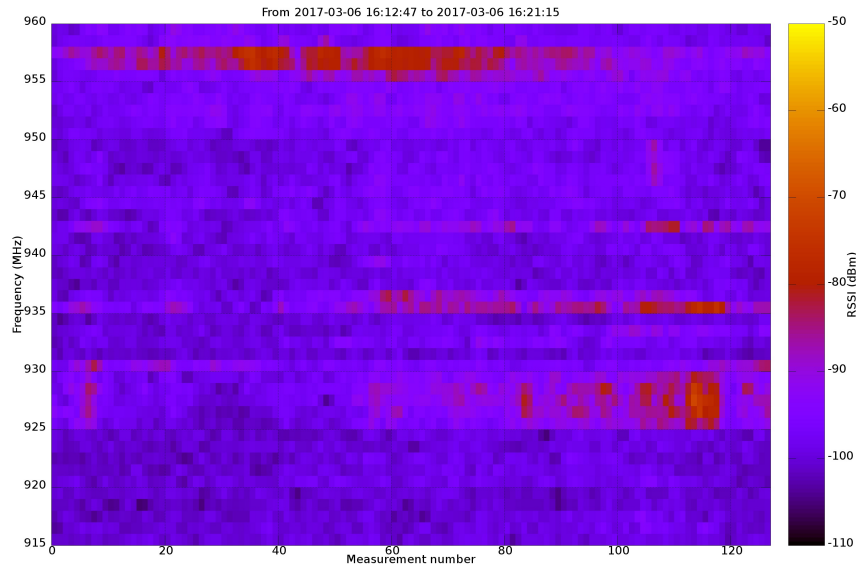
## Campaign measurements info



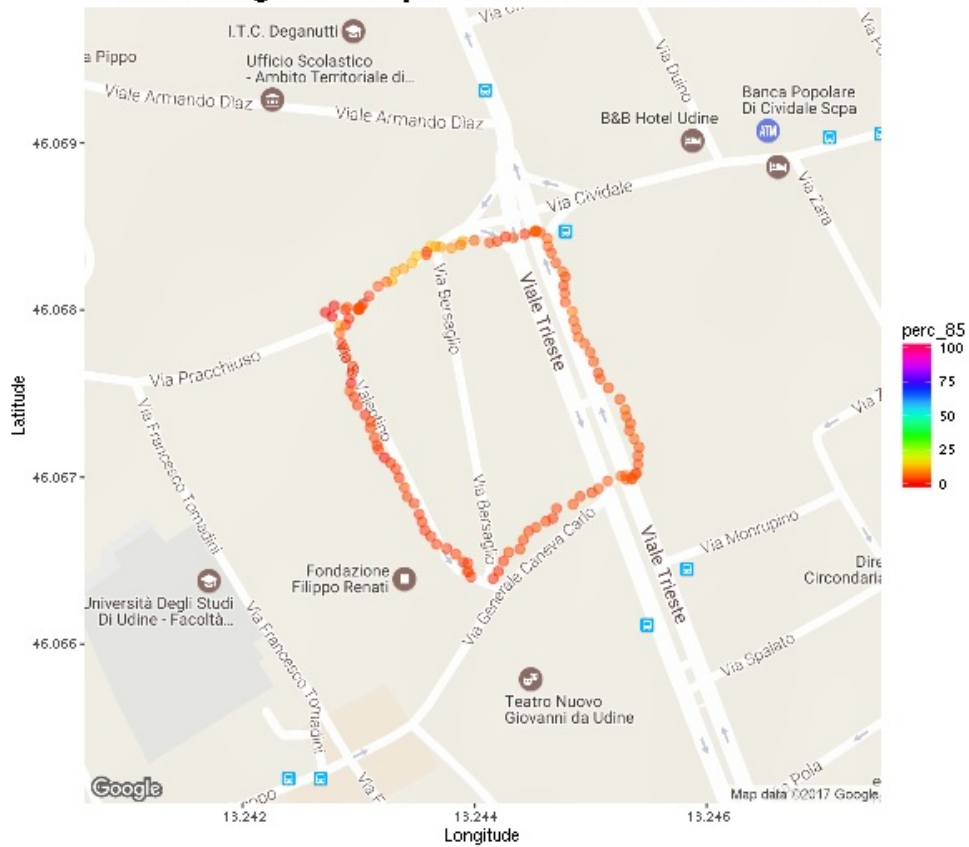
Info	Value
Campaign date:	2017-03-06
Campaign duration:	0:08:28 (hour:min:sec)
Route length:	0.8 Km
N. points:	128
Country:	Italy
Country Code:	IT
Place of measurement:	Udine
Region:	Friuli Venezia Giulia
Population:	97761

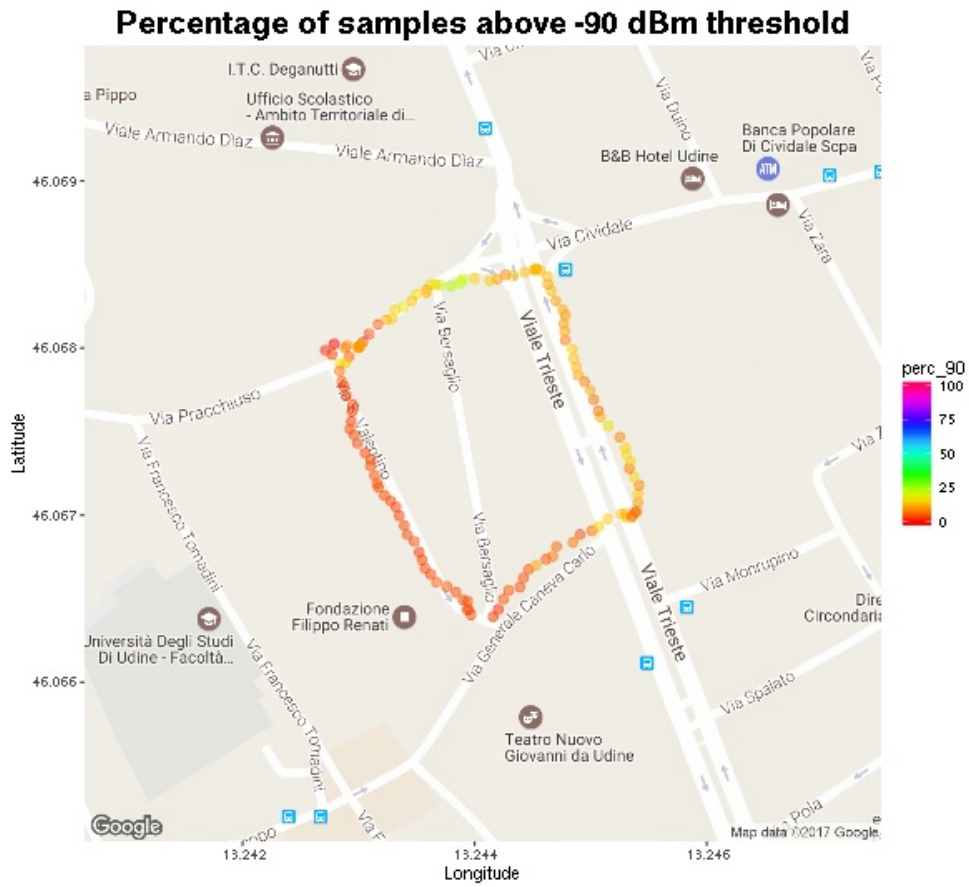
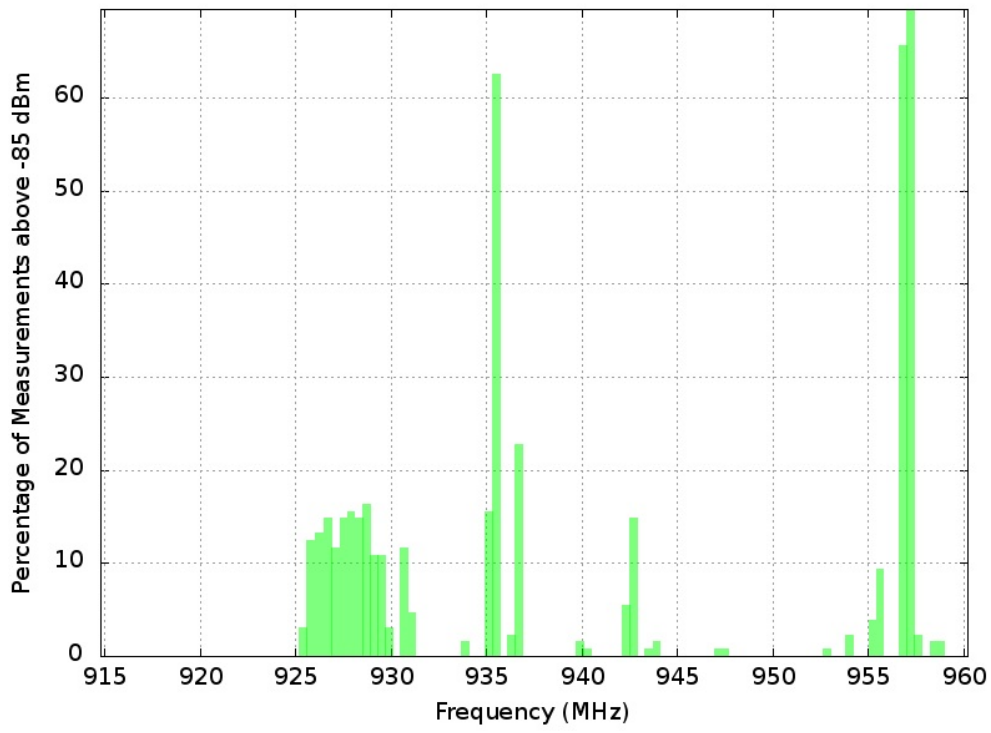
# Spectrum Maps

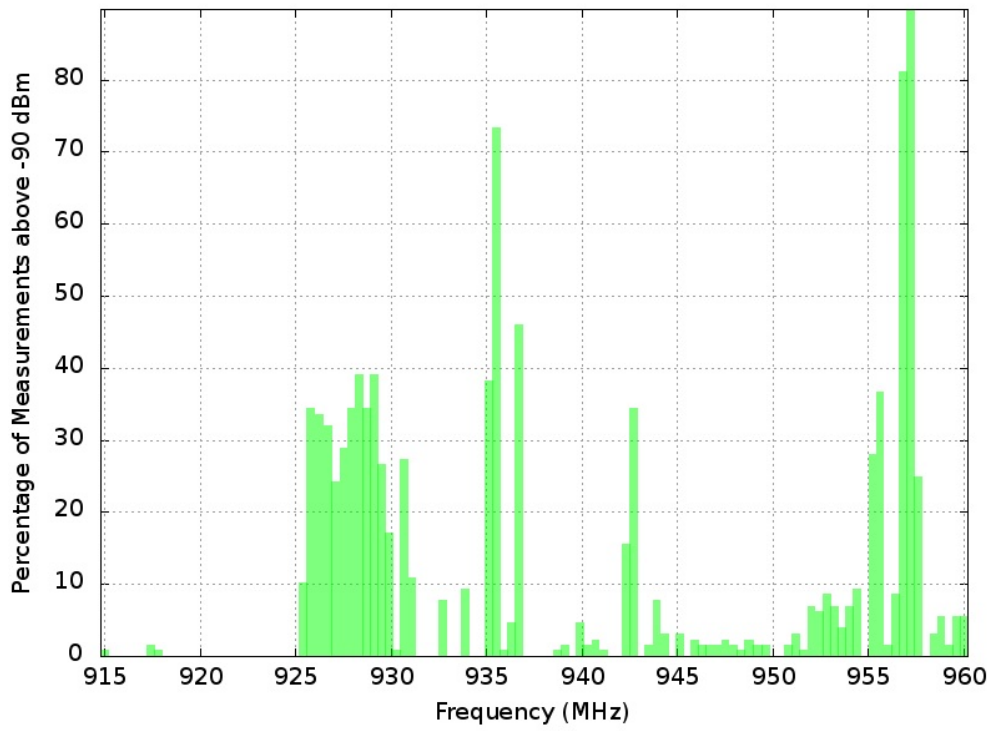
The first image shows power levels over time (number of measurements), the following images show different thresholds of spectrum occupancy.



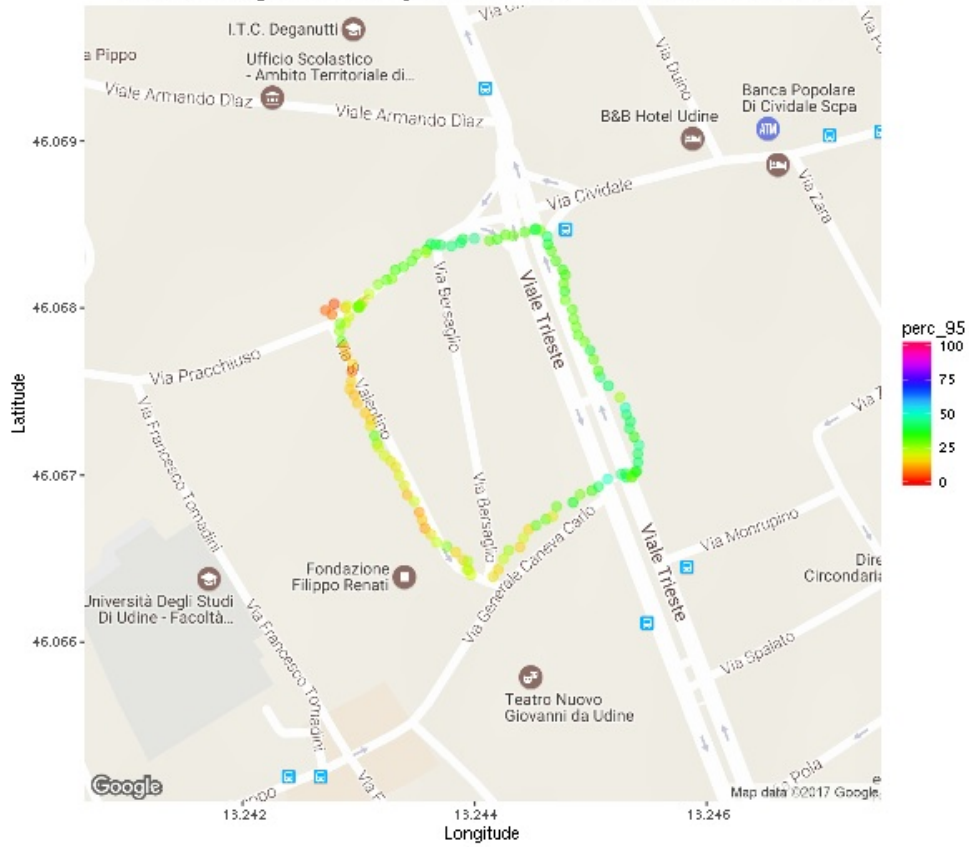
## Percentage of samples above -85 dBm threshold



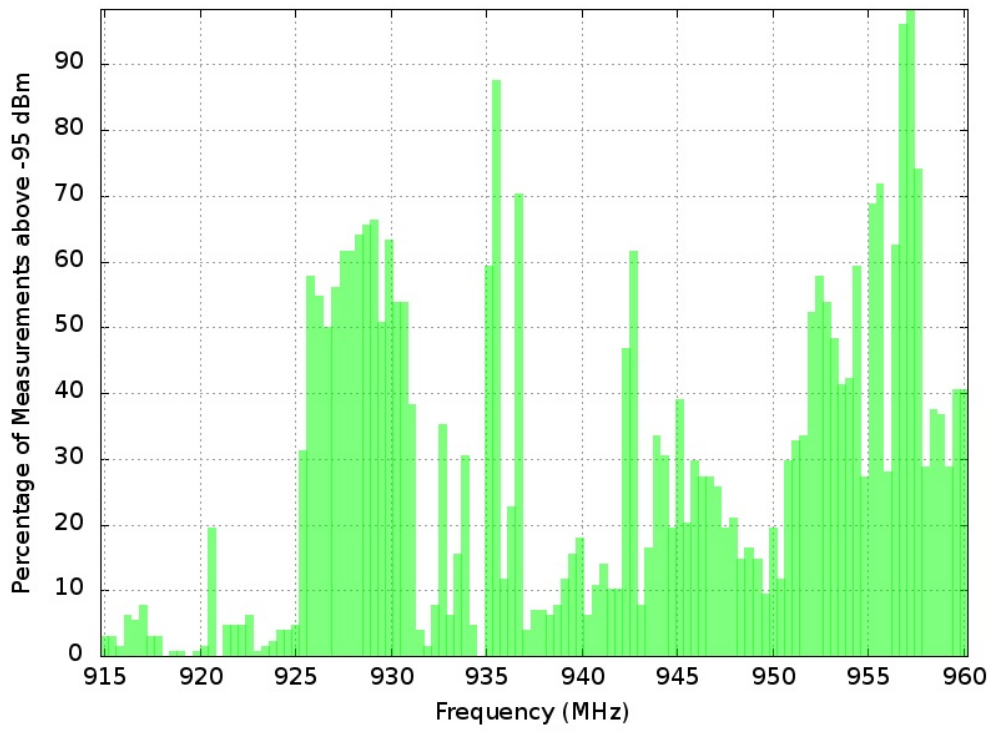




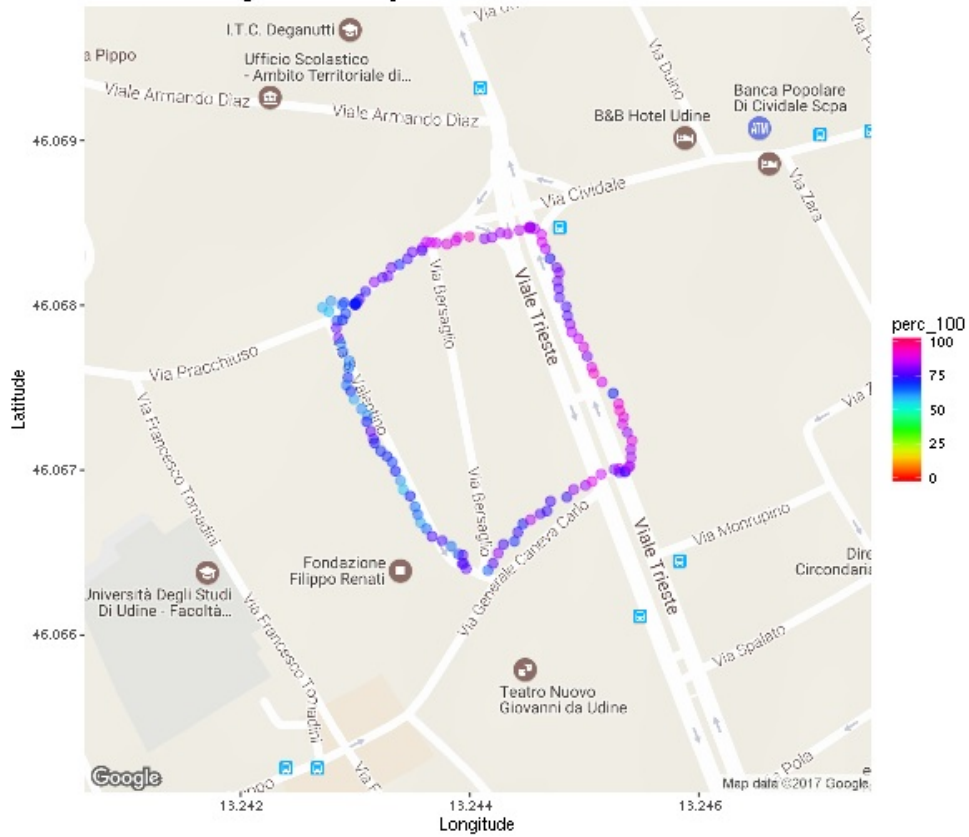
### Percentage of samples above -95 dBm threshold

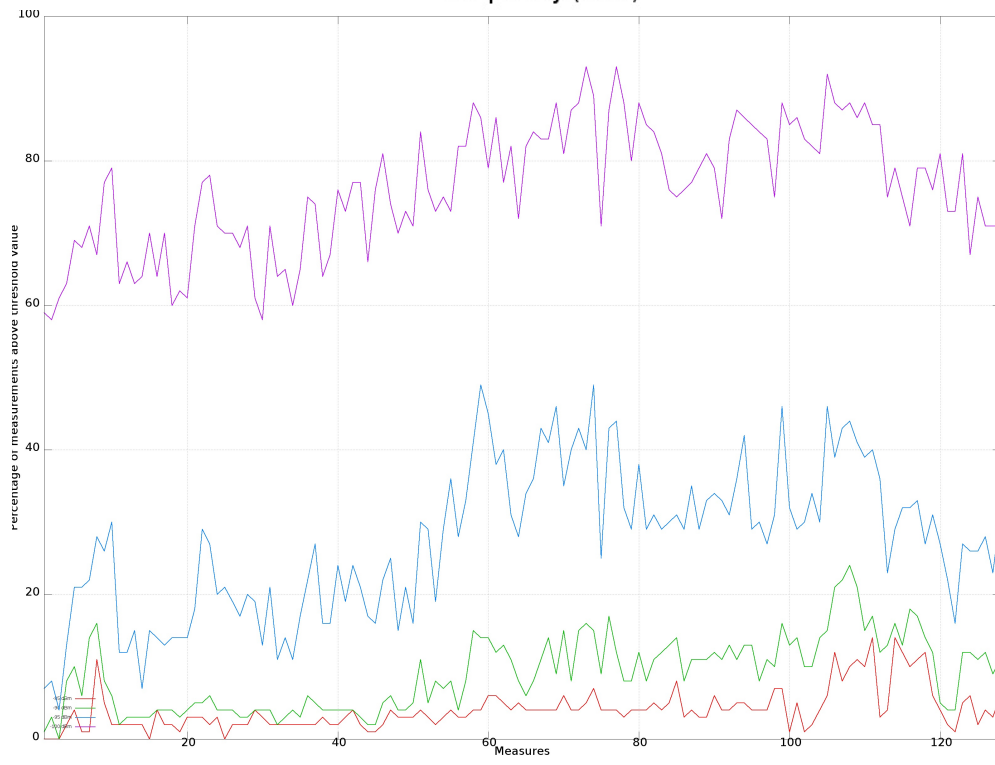
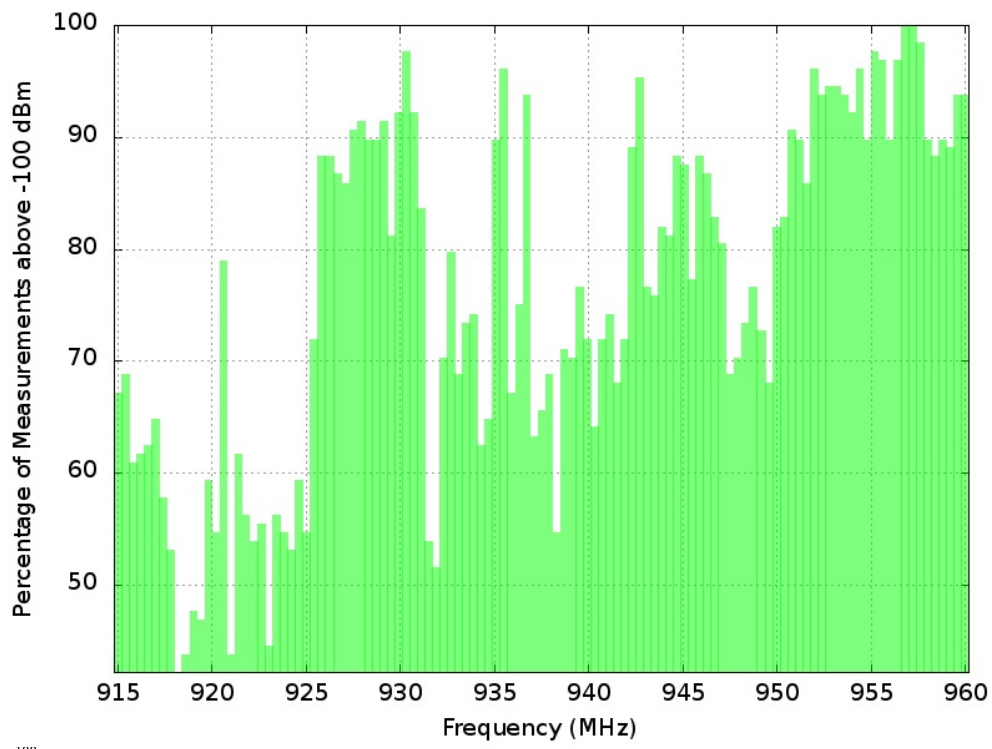


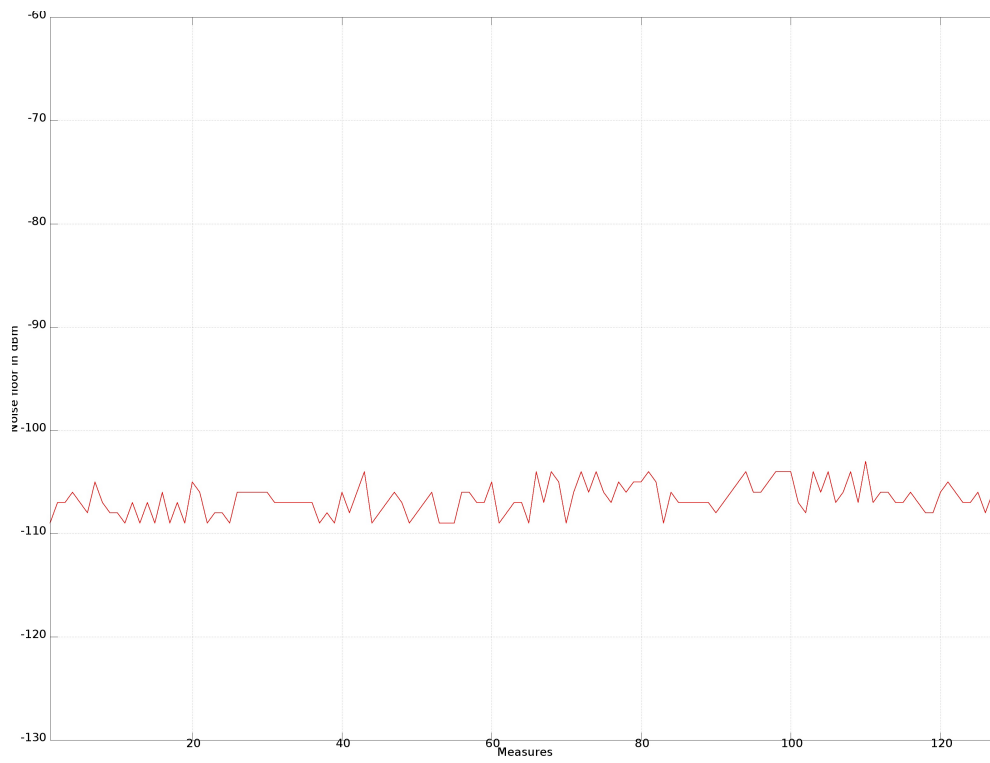




### Percentage of samples above -100 dBm threshold







## Sponsor

The project was supported by the Shuttleworth Foundation (<https://www.shuttleworthfoundation.org/>)



## Copyright © 2015

Wireless T/ICT4D Lab (<http://wireless.ictp.it>)

Marco Rainone - SolvITech (<https://www.linkedin.com/in/marcorainone>)